



# QUICK GUIDE

V1.0

## EasyStore<sup>™</sup>

Network Video Recorder

## Warning

- To reduce a risk of fire or electric shock, do not expose this product to rain or moisture.
- To avoid electrical shock, do not open the cabinet. Refer servicing to qualified personnel only.

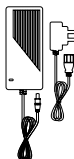
## Notice

- Please check if all the items on the package list have been included in package.
- This equipment must be installed and used in strict accordance with the instructions given in the user documentation. This equipment contains no user-serviceable components. Unauthorized equipment changes or modifications will invalidate all applicable regulatory certifications and approvals.
- Video and audio surveillance can be prohibited by laws that vary from country to country. Check the laws in your local region before using this product for surveillance purposes.
- When transporting the Anviz product, please use the original packaging or equivalent to prevent damage to the product.

# Packing List



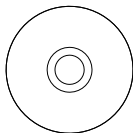
① NVR x1



② Power Adapter(48V)  
and Power Cable x1



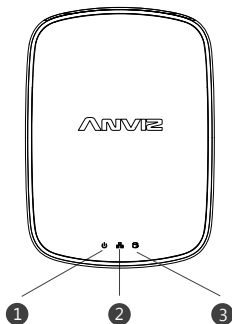
③ Quick Start Guide x1



④ CD x1

# Interfaces

## Front



### ① Power light:

Light flashes when system runs normally.

Light will be constant on when system crashes.

### ② Network light:

Light flashes when network connection is normal.

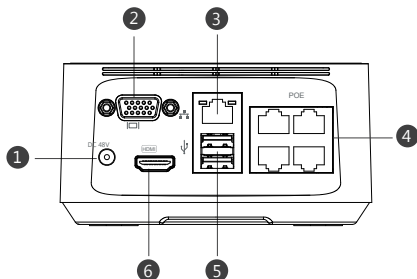
Light goes out when network connection is broken.

### ③ HDD light:

Light flashes when HDD works normally.

Light goes out when HDD doesn't work properly.

## Back



### ① DC48V: Connect to power adapter

### ② VGA Port: Connect to a HDTV or Monitor

### ③ Network Interface: Network connector port

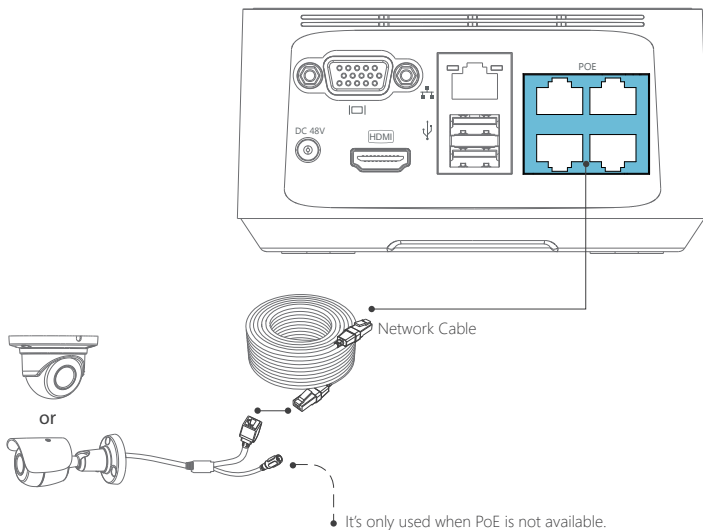
### ④ PoE Port: Connect to camera

### ⑤ USB Port: Connect the USB device

### ⑥ HDMI Port: Connect to HDTV or Monitor

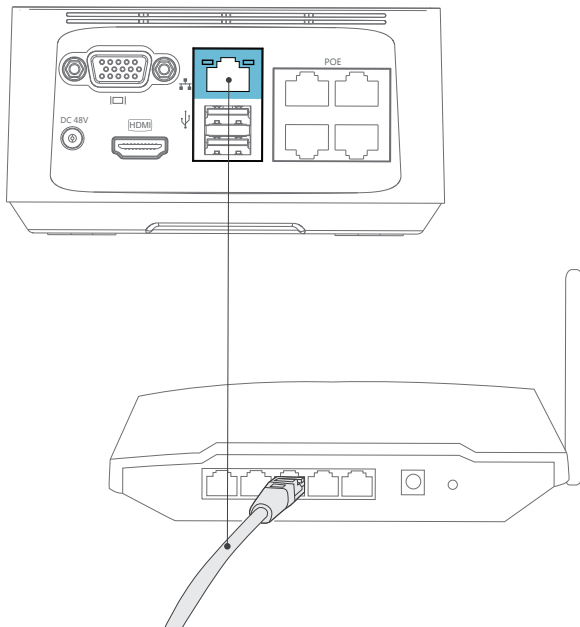
# Installation

To connect your camera(s) to the EasyStore, simply connect the supplied Ethernet cable to the LAN connection on the camera then plug the other end of the Ethernet cable into one of the camera inputs on the back of the EasyStore. EasyStore supports PoE function. No extra power source is required for cameras.

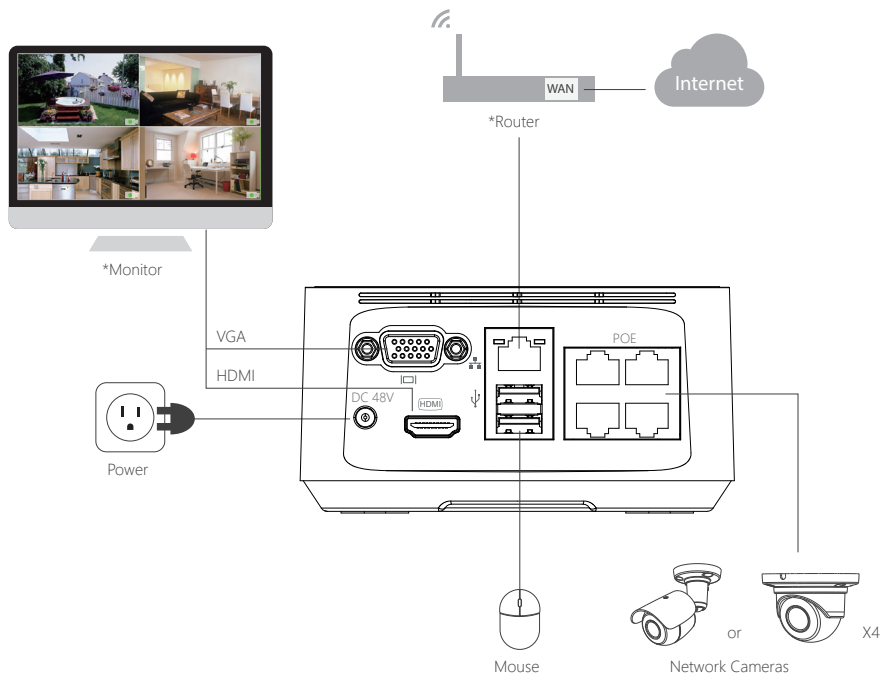


## Installation

Connect the Ethernet cable(supplied) to the LAN connection on the EasyStore, and then connect the other end to a spare port on your router. This steps help you to see the videos on your phone. You can skip this step if mobile monitoring is not required.



# Application

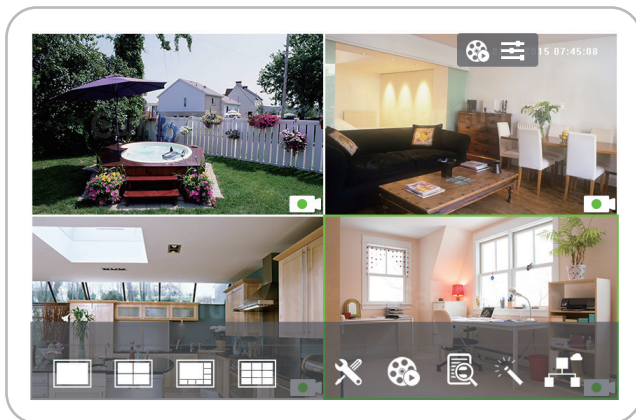


\*Not included

# Software Guide

## Live View Mode

Live View is the default display mode. All connected cameras are displayed on this screen. You can check the status or operation of your MiniStore and cameras using the icons and Menu Bar on the Live View screen.



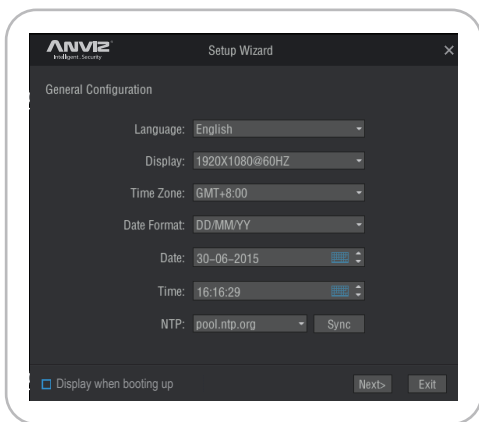
Right click mouse to show the setup page.

Select "Setup Wizard", left click to enter the setup wizard window



# Software Guide

## General Configuration



**Language:** Choose the language you would like the menu system to be displayed in.

**Display:** Determine the number of pixels the MiniStore will output.

**Time Zone:** Select the time zone you are in.

**Date Format:** Choose how you would like the date to be displayed.

**Date:** Choose the date.

**Time:** Choose the time.

**NTP:** Stands for "Network Time Protocol". It is a way for the MiniStore to connect to the internet and automatically updates and maintains accurate times. Basic users only need to click the "Sync" button to synchronize the time. Click "Next" to continue.

# Software Guide

## Setting Up on Mobile Device



Step 1: Connect MiniStore to the internet.

Step 2: Scan the QR code, install the CamGuardian APP and register the User.

Step 3: Press "+" to scan the UID code and add the device in CamGuardian APP.

Click "Finish" to complete the Setup Wizard.

Shortly you will see all connected cameras displayed on the Live View screen.

You can also find those QR codes on the back of MiniStore.

# Software Guide

## Account Configuration



The screenshot shows a dark-themed window titled "Anviz Setup Wizard". The "Anviz" logo is in the top left. The window is titled "Setup Wizard" and has a close button in the top right. The main heading is "Account Configuration". There are three input fields: "User Name:" with the text "admin", "Password:", and "Confirm Password:". Each field has a small icon to its right. Below these fields is a checkbox labeled "Enable Password". At the bottom left is a checkbox labeled "Display when booting up". At the bottom right are three buttons: "<Back", "Next>", and "Exit".

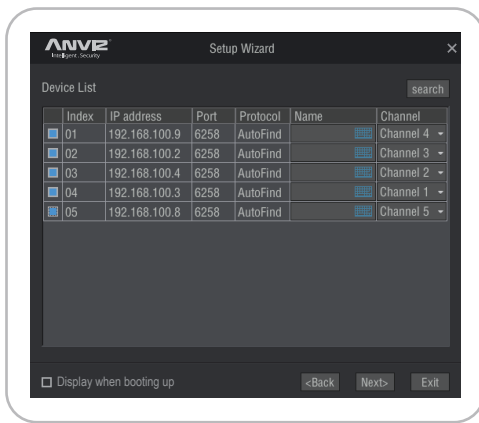
In this screen you are able to change the default password. To guard against unauthorized access, we recommend creating a new password for your Admin account. The password can be between 1 and 15 numbers, letters and/or symbols. Once a password has been entered, it must be re-entered in the space marked as "Confirm Password".

Select "Enable Password" if you would like to be prompted for the user account's password when accessing the main menu.

Click "Next" to continue.

# Software Guide

## Camera Configuration



The Camera List contains the information of all cameras connected to the network. Click "Search" to find the cameras in the network and click the check box. If you wish to name the camera, simply click on the space in the "Name" category. Click "Next" to continue.