

# Biometric

Biometric Application Solutions





# CrossChex

## Time Attendance and Access Control Management System

CrossChex is an intelligent management system of access control and time attendance devices, which is applicable to all Anviz access controls and time attendances. The user-friendly and interactive design makes this system very easy to operate, the powerful function makes this system realize the management of department, staff, shift, payroll, access authority, and exports different time attendance and access control reports, satisfying different time attendance and access control requirements in different complicated environments.



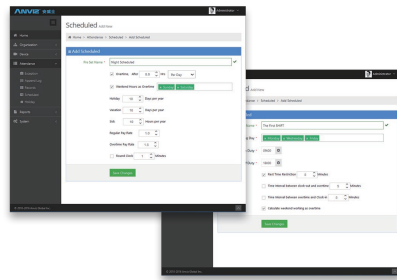
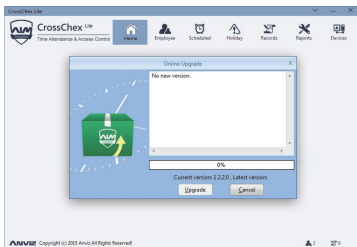
### Desktop

For small & medium Business  
T&A, A&C all in one system



### Cloud

For global cloud system



### Device Management

Quick add device by network automatic search, Configure Anviz Biometric device and real time monitoring device connection.



### Access Control Management

Control up to 16 access groups and 32 time zones, door state monitoring and remote door control by administrator.



### Shift Management

Support daily/hourly shift schedule and intelligent shift schedule for different type of the employee. Flexible to meet enterprise management requirements.



### Report Management

Daily/individual summary and report, work hour displayed by hourly category. support CSV and xlsx export. Support report format design.



### Human Resources Management

Multi levels administrator and department settings, Mail push report the Administrator.



### Mobile Management

Mobile APP function makes the time attendance and records check everywhere.

## Reader

### T5 (Integrated Into Your System)



- 32-Bit High Speed CPU
- Management Card Registration
- Max 3,000 Users, Max 3,000 Templates, 50,000 Records
- Virtual Keypad by Cards for User ID Management
- Infrared Finger Detect & Wakeup Sensor
- RS485, Mini USB, TCP/IP, Wiegand Out
- FP, Card, FP+Card
- Standard EM Card, Optional Mifare Card
- IP54

### T5S (Slave Reader)



- 32-Bit High Speed CPU
- Infrared Finger Detect & Wakeup Sensor
- RS485
- FP
- Optional EM Card/Mifare Card
- IP54

### C2SR (IP65 Reader)



- Wiegand 26/34
- Power Supply 12V DC, <90mA
- Operating Frequency 125KHz 13.56MHz
- Operating Temperature: -25 °C~60 °C
- Operating Humidity: 20%-80%
- IP65

## Standalone Access Control

### M3 (Outdoor RFID Solution)



- 32-Bit High Speed CPU
- Metal Case, Water & Dust Proof
- Max 3,000 Users, Max 3,000 Cards, 50,000 Records
- Touch Activated Keypad
- RS485, Mini USB, TCP/IP, Wiegand Out
- Direct Lock Control
- Supports LF/HF Dual Frequency Card
- Tamper alarm
- IP65

### M5 Pro (Outdoor Reader/Controller)



- 32-Bit High Speed CPU
- Metal Case, Water & Dust Proof
- Max 3,000 Users, Max 3,000 Templates, 50,000 Records
- Fingerprint Reader, Touch on Activation
- RS485, Mini USB, TCP/IP, Wiegand Out, Relay Out
- FP, Card
- Standard EM Card
- Tamper Alarm
- IP65, IK10

### M7 (Outdoor Solution)



- 32-Bit High Speed CPU
- Max 3,000 Users Max 5,000 Templates, 200,000 Records
- Fingerprint Reader, Touch on Activation
- RS485, Mini USB, TCP/IP
- PoE (IEEE802.3af)
- Supports LF/HF Dual Frequency Card
- Group, Time Zone, Direct Lock Control,
- Scheduled Bell, Wiegand In/Out, Door Sensor

### C2 Slim (IP65 Controller)



- Max 3,000 Users Max 3,000 Templates, 200,000 Records
- Fingerprint Reader, Touch on Activation
- RS485, PoE TCP/IP
- PoE (IEEE802.3af)
- Standard EM Card, Optional Mifare Card/HID iClass
- Group, Time Zone, Direct Lock Control,
- Wiegand In/Out, Door Sensor
- IP65

### W2 (New Color Screen)



- Industrial High Speed CPU
- Max 3,000 Users, Max 3,000 Cards, 100,000 Records
- Fingerprint Reader, Touch on Activation
- TCP/IP, Mini USB, USB Host, RS485,
- 1 Relay Output
- Wiegand output, Switch, Door Sensor, Tamper Alarm, Doorbell
- Internal Webserver
- DC 12V
- Standard EM Card, Optional Mifare Card

### P7 (PoE Standalone Access Controller)



- 32-Bit High Speed CPU
- Max 3,000 Users, Max 5,000 Templates, 50,000 Records
- Touch Activated Keypad
- Fingerprint Reader, Touch on Activation
- RS485, Mini USB, TCP/IP
- PoE (IEEE802.3af)
- Group, Time Zone, Direct Lock Control, Scheduled Bell, Wiegand In/Out, Door Sensor
- Standard EM Card, Optional Mifare Card
- Optional Outdoor Waterproof Cover
- IP53

### TC580 (PoE)



- High-speed processor Dual Core 1.0 GHz
- Max 10,000 Users, Max 10,000 Cards, 200,000 Records
- Linux, 3.2 TFT LCD
- Employee Self-Service Record Inquiry
- RS232, RS485, USB Host, PoE, TCP / IP, WiFi,
- Optional 3G
- Wiegand Input, Wiegand Output
- Internal Webserver
- Groups, Time Zones, Customized Messages,
- Programmed sirens, Relay output
- Supports EM Card, Optional Mifare Card

### C5 (Stable & Powerful)



- Industrial High Speed CPU
- Max 3,000 Users, Max 3,000 Cards, 100,000 Records
- Fingerprint Reader, Touch on Activation
- TCP/IP, WIFI, USB Host, RS485,
- 1 Relay Output
- Wiegand output, Switch, Door Sensor, Tamper Alarm, Doorbell
- Internal Webserver
- DC 12V
- Standard EM Card, Optional Mifare Card
- Optional WIFI

## Standalone Access Control

TC550 (All In One)



- 32-Bit High Speed CPU
- Max 5,000 Users, Max 5,000 Templates, Max 50,000 Records
- RS232, Mini USB & USB Host, TCP/IP
- 8 Customizable T&A States, 6-digit Work Code
- Group, Time Zone, Message Function, Relay Out, Scheduled Bell, Wiegand In & Out
- Standard EM Card, Optional Mifare Card

OC500 (All In One RFID)



- 32-Bit High Speed CPU
- Max 20,000 Users, Max 20,000 Cards, Max 200,000 Records
- RS232, Mini USB & USB Host, TCP/IP
- 8 Customizable T&A States, 6-digit Work Code
- Group, Time Zone, Message Function, Relay Out, Scheduled Bell, Wiegand In & Out
- Standard EM Card, Optional Mifare Card

VF30 (Global Best Seller)/VP30 (Compatible)



- VF30/VP30
- VF30
- VP30

- 32-Bit High Speed CPU
- Max 3,000 Users, Max 3,000 Templates, 50,000 Records
- Max 20,000 Users, Max 20,000 Cards, 200,000 Records
- Fingerprint Reader, Touch on Activation
- RS485, Mini USB, PoE-TCP/IP
- Group, Time Zone, Direct Lock Control, Scheduled Bell, Message Function, Relay Out, Wiegand In/Out, Doorbell, Door Sensor
- Standard EM Card, Optional Mifare Card
- Card, ID+PW, PW+Card
- Optional Outdoor Waterproof Cover
- IP53

T5 Pro (World Most Compact)



- 32-Bit High Speed CPU
- Management Card Registration
- Max 3,000 Users, Max 3,000 Templates, 50,000 Records
- Infrared Finger Detect & Wakeup Sensor
- RS485, Mini USB, TCP/IP
- Direct Lock Control, Wiegand Out, Door Sensor
- Standard EM Card, Optional Mifare Card
- IP54

OA1000 Pro (Industry Design Award)



AFO5

Waterproof  
Dust proof  
Scratchproof

- Dual Core 1.0GHZ High Speed Processor
- Anviz AFOS Fingerprint Sensor
- 10,000 Users, 100,000 Logs
- Linux, 3.5" Samsung TFT LCD, 1.3MP camera
- Display Fingerprint & User Picture, Snapshot
- Employee Self-Service Record Inquiry
- RS232, RS485, USB Host, TCP/IP, Optional WiFi/3G
- Dual Relays Out, Wiegand In & Out, 16 Groups, 32 Time Zones
- Standard EM Card, Optional HID iClass Mifare Card Reader

OA1000 Mercury Pro (Live Scan)



Lumidigm®  
Wet Fingerprint  
Dirty Fingerprint  
Oil Fingerprint

- Dual Core 1.0GHZ High Speed Processor
- Lumidigm Mercury Live Scan Fingerprint Module
- 1,000 Users (Lumidigm Algorithm) 10,000 Users (Optional Anviz BioNANO Algorithm) 200,000 Logs
- Linux, 3.5" Samsung TFT LCD, 1.3MP camera
- Display Fingerprint & User Picture, Snapshot
- Employee Self-Service Record Inquiry
- RS232, RS485, USB Host, TCP/IP, Optional WiFi/3G
- Dual Relays Out, Wiegand In & Out, 16 Groups, 32 Time Zones
- Standard EM Card, Optional Mifare Card Reader

## Iris Recognition System

UltraMatch S2000



- Dual Core 1GHz CPU
- Linux OS
- Max 2,000 Users, Max 100,000 Records
- OLED Screen
- TCP/IP, RS485, WiFi
- Inbuilt Webserver, Online Registration
- Wiegand Out
- RFID

## Face Recognition System

FacePass 7

NEW



- 3,000 Users, 3,000 Cards, 100,000 Records
- Three Identification Mode: Face, Card, ID+PW
- Energy Saving Auto Wake/Sleep
- Voice and LED Prompt
- 3.2" HD TFT Touch Screen
- USB host
- WiFi, TCP/IP Connectivity
- Relay Out, Wiegand Out
- Webserver

# Time Attendance

C2 Pro (Professional Fingerprint & Card Terminal)



- Linux Platform
- Max 10,000 Users, Max 10,000 Templates 100K Records
- Dual-Core 1GHz Processor
- Less than 0.5s Verification
- 3.5" TFT LCD
- Fingerprint Reader, Touch on Activation
- Infrared Optical Imaging Technology
- Optional RFID Reader Modules (HID iClass, ANVIZ)
- PoE-TCP/IP, WiFi, RS485, USB Host
- Inbuilt WebServer
- Relay Out

A380 (Color screen)



- Linux platform
- Max 10,000 Users, Max 10,000 Templates, 200,000 Records
- Dual-Core 1 GHz processor
- Identification time less than 0.5s
- 3.2 "TFT LCD
- Touch-activated fingerprint sensor
- Infrared finger detection technology
- Standard EM Card
- TCP / IP & WiFi, RS232, USB Host
- Built-in WebServer
- 1 relay for Belling and Connection to the Access Control System

C2 (World thinnest design)



- Linux platform
- Max 3,000 Users, Max 100,000 Records
- Mini USB & USB Host, TCP/IP
- Inbuilt WebServer
- 8 Customizable T&A States, Auto T&A States Switch
- Daylight Saving, Work Code, Message Function
- Employee Self-Service Record Inquiry
- Relay Out
- Over USB or DC 5V
- Standard EM RFID, Optional Mifare Card

W1 (New Color Screen)



- Industrial High Speed CPU
- Max 3,000 Users, Max 10,000 Records
- Auto 16 T&A States Switch
- Fingerprint Reader, Touch on Activation
- TCP/IP, Mini USB & USB Host
- Daylight Saving, Work Code, Message Function
- Employee Self-Service Record Inquiry
- Internal Webserver
- DC 5V
- Optional EM/Mifare Card

EP300 (The Best Combination of Function and Price)



- 32-Bit High Speed CPU
- Unique Fingerprint Positioning Design
- Max 5,000 Users, Max 5,000 Templates, 50,000 Records
- Mini USB & USB Host, TCP/IP
- Rechargeable 1100mAh Battery
- Power Over USB/DC 5V
- 8 Customizable T&A States, 6-digit Work Code

D200 (Super Slim & Flexible)



- Desktop or Wall Mounted
- 32-Bit High Speed CPU
- Max 5,000 Users, Max 5,000 Templates, 50,000 Records
- Mini USB, TCP/IP
- Rechargeable 1100mAh Battery
- Power Over USB / DC 5V
- 8 Customizable T&A States, 6-digit Work Code

A300 (World Popular Model)



- 32-Bit High Speed CPU
- Max 5,000 Users, Max 5,000 Templates, 50,000 Records
- RS232, Mini USB & USB Host, TCP/IP, Wifi
- Relay Out (For Scheduled Bell)
- Power Over USB or DC 5V
- 8 Customizable T&A States, 6-digit Work Code
- Standard EM Card, Optional Mifare Card
- Short Message

TC530 (The GPRS T&A Terminal)



- Max 5,000 Users, Max 5,000 Templates, 50,000 Records
- Mini USB & USB Host, TCP/IP
- Relay Out (For Scheduled Bell)
- Power Over USB or DC 5V
- 8 Customizable T&A States, 6-digit Work Code
- Standard EM Card, Optional Mifare Card/GPRS
- Short Message

OC180 (Classic, Ultra-thin RFID Time Attendance)



- Max 20,000 Users, 200,000 Records
- Mini USB & USB Host, TCP/IP
- Power Over USB or DC 5V
- 8 Customizable T&A States, 6-digit Work Code
- 125KHz EM Card
- Inbuilt 1100mAh Rechargeable Battery
- Inbuilt RFID Reader
- Optional Mifare Card

# Accessories

AML270



- Voltage: 12/24V DC
- Working Current: 500/250mA
- Holding Force: 250KGS
- Weight: 1.8KGS
- Size: 253\*25\*48mm

AEL200



- Working Current: 350mA
- Standby Current: 250mA
- Holding Force: 1000KGS
- Weight: 1.05KGS
- Size: 200\*35\*38mm

AEL201



- Working Current: 650mA
- Standby Current: 250mA
- Holding Force: 1000KGS
- Weight: 1.05KGS
- Size: 200\*35\*38mm
- Door States Signal Output(DSM)

PoE Splitter



- IEEE 802.3af Standard, Input DC 36V-57V (1 10/100M RJ45 Port)
- Output DC 5V (USB), DC 12V (2 Pin terminal block), MAX 13W
- AUTO Negotiation/AUTO MDI/MDIX
- Circuit Isolation Protection
- Delivers Power Up to 100 Meters
- Dimensions: 102\*45\*27mm (L\*W\*H)

U Bio (USB Optical Fingerprint Reader)



- Anviz Optical Fingerprint Sensor
- Accurate Image Capture and Good in Anti-interference, Fingerprint Image of No-distortion, Latent Fingerprint Removal
- USB Connection, SDK Available for Software Development

## BioNANO® V11

### Core Algorithm

Fingerprint - Facial - Iris

## BioNANO Core Algorithm

Anviz biometric technologies are widely used in our fingerprint identification, face recognition and iris identification products. As one of our key technological achievements, the biometric identification algorithm BioNANO, was developed in house by our engineers and is now the algorithm used in all Anviz biometric products.



### Fingerprint

- Suitable for both wet and dry fingers
- Automatically heals the broken lines in fingerprint images
- Extraction of features in worn fingerprints
- Fingerprints template auto update

- **Anviz Hermetic AFOS Fingerprint Sensor**  
Waterproof, dust proof and scratchproof IP65 fingerprint sensor

- **Fingerprint Template Auto Update**  
Auto update means the previous lower quality fingerprint template will be automatically replaced by the new higher quality one during fingerprint verification

- **High Speed Matching**  
Incredibly fast matching algorithm will complete a 1:1 match less than 0.5 sec and 1:3000 users less than 1 sec.

- **Living Recognition**  
Living recognition can get fingerprint data from beneath surface of the skin so that dryness or even damaged or worn fingers create no problems for reliable reads.

- **SC SDK**  
Anviz Software Development Kits (SDKs) offer a device communication, template extraction, access control setting and more. They support multiple platforms and language interfaces. Complete with APIs, Anviz SDKs are fully documented and come with sample applications for as-is or modified use.

- **SC EVK**  
Anviz provide Evaluation Kit (EVK) for OEM Modules. The EVK offers Mini USB, RS485, RS232, Wiegand, Relay output and support Standalone and USB connection work mode.



### Facial

- Non-contact
- Fast speed and easy to use
- Suitable for different lux application

- **Multi-communication Mode**  
TCP/IP, Mini USB, RS485, Wiegand, GPRS, WIFI and so on.

- **Webserver**  
Visit the device directly via the network. Setup and search the record from the device.

- **Wide Temperature Circuit Design**  
Wide temperature circuit will ensure the device is suitable for different complex environment.

- **Dual Storage**  
Dual storage ensures the data is more secure.

- **BioNANO SDK**  
BioNano SDKs offer a full spectrum of capabilities, including image capture, template extraction, template matching, identification and more. BioNano SDK support multiple platforms and language interfaces.

- **BioNANO EDK**  
Make the Anviz products with greater potential application, Anviz provide the Embedded development kits (EDKs). The Developers extend application base on Anviz product directly. The EDKs support Anviz Linux and WinCE terminal.



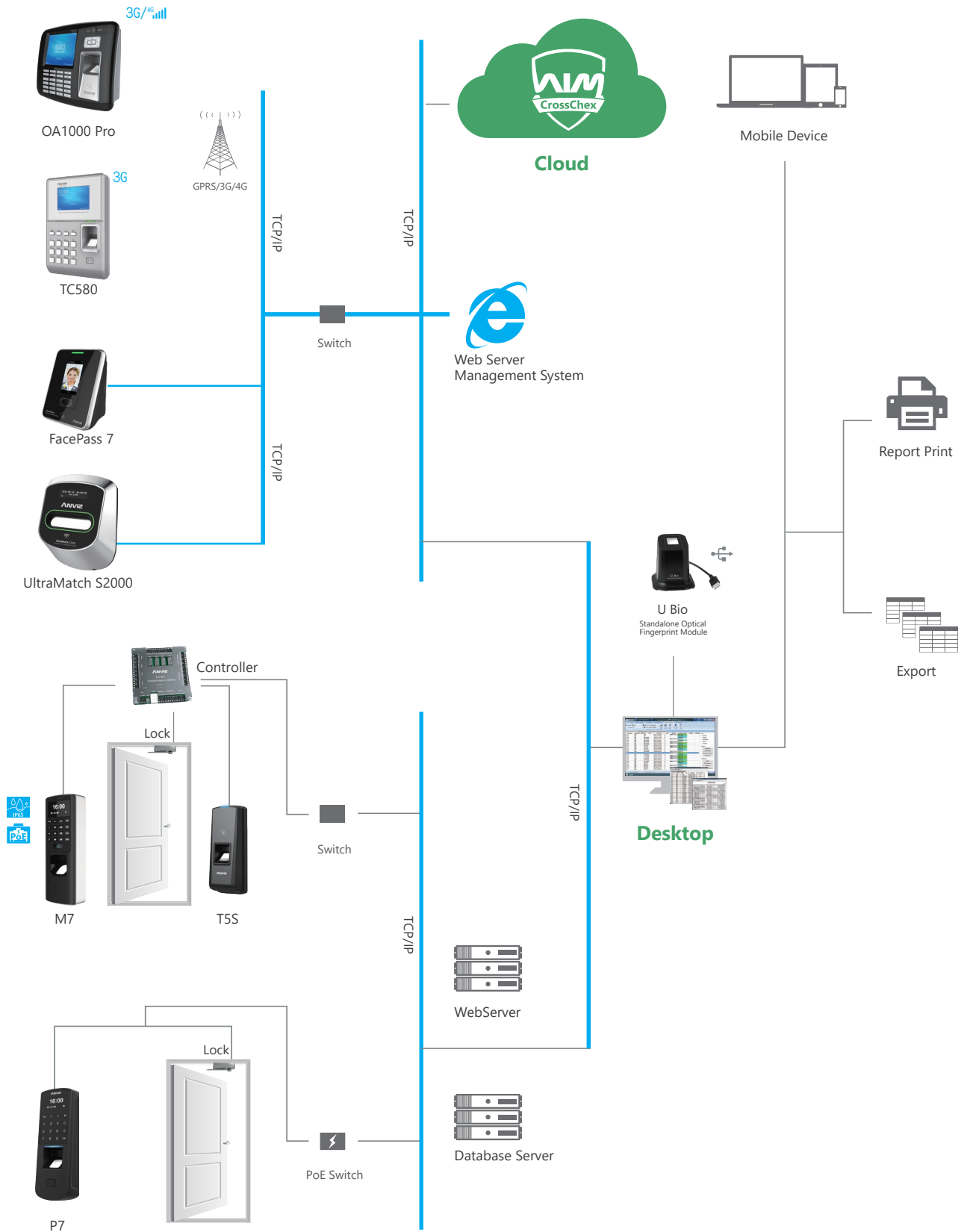
### Iris

- No way to fake, highest security
- Most accurate, convenient, and reliable
- Touchless verification, most sanitary



# Intelligent Security Solution

Time Attendance | Access Control | Identification



# About Anviz

Founded in 2001, Anviz is a global leader in the field of intelligent security including Biometric and RFID. Cutting edge technologies, sophisticate QA system (ISO certified) and worry-free services & support provide our partners with the key of business success.

Anviz dedicates to offer professional and comprehensive security solutions. With the continuously growing demand of public and private security, Anviz announced the surveillance product line which was created based on the innovations of our optical and digital image processing technology.

Combining the high-quality products and cost-effective security solutions, Anviz serves various clients from government, law, retail, industrial, commercial, financial, medical, education, etc.

## AGPP Anviz Global Partner Program

AGPP is Anviz Global Partner Program. It is designed for industry-leading distributors, resellers, software developers and system integrators highly qualified in providing intelligent security solutions of Biometric, RFID and Surveillance in targeted vertical markets. The program helps partners build a sustainable business model in a fast-changing environment, where customers require value-added services, focused technical expertise and high levels of satisfaction.



**Aggressive**  
Industry-leading Margins

**Assisted**  
Marketing Campaign Programs

**Priority**  
Partner Technical Support

**Preferred**  
Professional Services

**Online**  
Ordering and Private Partner Portal

**Earned**  
MDF CO-OP Funds

**Partner**  
Training Provided

**Customer**  
Referral and Lead Generation Programs

For more information, visit [www.anviz.com](http://www.anviz.com), or email us [sales@anviz.com](mailto:sales@anviz.com).

2018© Anviz Global. All Rights Reserved. Due to the consistent improving of the product, this specification and appearance is subject to change without notice.