

# M-Bio

Desktop and Cloud Based Wireless Fingerprint  
and RFID Time & Attendance Device



WiFi



Cloud



Battery



Bluetooth

M-Bio is a new generation desktop wireless cloud-based fingerprint and RFID time and attendance device. With fast Linux based 1Ghz CPU, and latest Bionano fingerprint algorithm, M-Bio ensures a less than 0.5 seconds comparison time under 1:3000 status. The Wi-Fi and Bluetooth function realizes the flexible installation and operation. The Web server function realizes easily self-management of the device. M-Bio also supports management on smartphone by Crosschex Mobile App or by web and cloud-based platforms.

# M-Bio

## Desktop and Cloud Based Wireless Fingerprint and RFID Time & Attendance Device

### ■ Features



#### 1Ghz Linux Based CPU

The new Linux based 1Ghz processor ensures the 1:3000 comparison time less than 0.5 seconds.



#### WiFi

The WiFi function ensures power on to work, and realize the flexible installation of the device.



#### Bluetooth

Your mobile device will be the key with Bluetooth function and you can realize management by Crosschex Mobile App on your smartphone.



#### Battery

The long life battery ensures up to 3 hours portable application.



#### Touch Active Fingerprint Sensor

The touch active sensor ensures the quick response for each detection and saving the total power consumption of the device.



#### Web Server

The Web server ensures the easily quick connection and self management of the device.



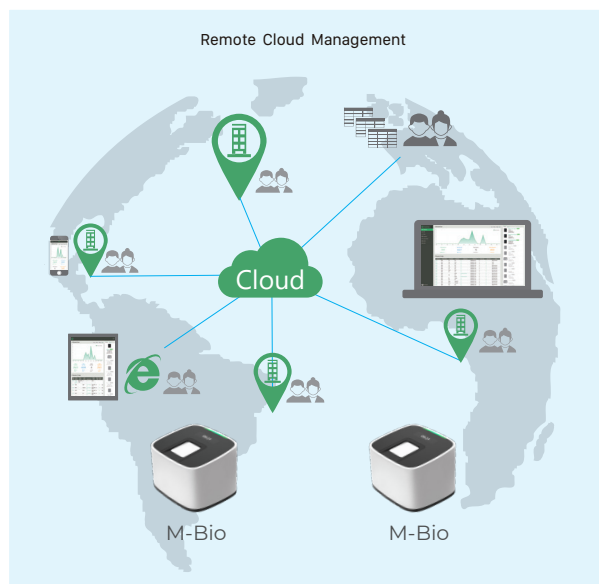
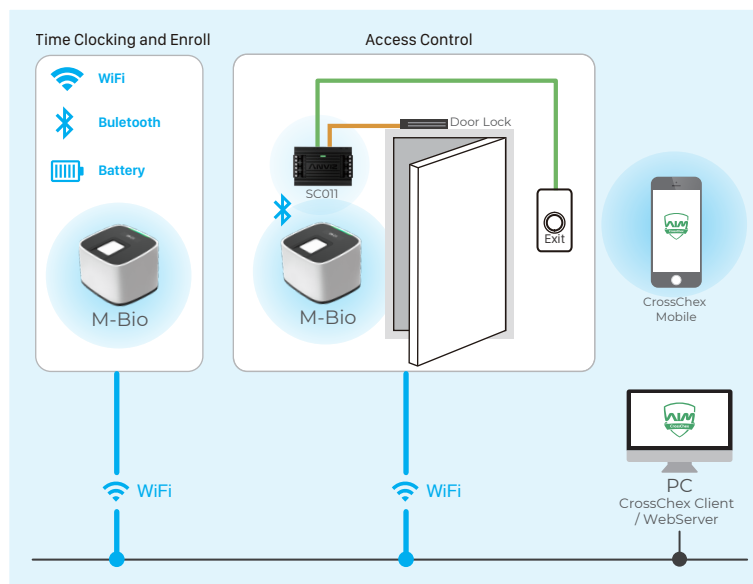
#### Cloud Application

The web-based cloud application lets you access to the device by any mobile terminal from anytime and anywhere.

### ■ Key Specifications

User	3,000
Card	3,000
Record	100,000
Communication	Micro USB, WiFi, Bluetooth
Identification Mode	Fingerprint, Card(Optional EM and Mifare Card)
Identification Speed	<0.5s
Card Reading Distance	13.56MHz >2CM for Standard CR80 Card
Web Server	Support
CPU	Linux Based 1Ghz CPU
RFID Card	Optional EM and Mifare Card
Working Temperature	-25°C(-13°F) to 45°C(-113°F)
Humidity	10% to 90%
Power	DC5V
Battery	300mAh

### ■ System Configurations



**ANVIZ**  
POWERING SMARTER WORLD

#### Anviz Global Inc.

41656 Christy Street Fremont, Fremont, CA, 94538

Tel: 1-510-573-6552 | Toll-free: 1-855-268-4948 | [sales@anziv.com](mailto:sales@anziv.com) | [www.anziv.com](http://www.anziv.com)

©2020 Anviz Global Inc. Anviz and identifying product names and numbers herein are registered trademarks of Anviz Global Inc. All non-Anviz brands and product names are trademarks or registered trademarks of their respective companies. Product appearance, build status and/or specifications are subject to change without notice.

Due to the consistent improvement of the product, this specification and appearance are subject to change without notice.