



IntelliSight

**Anviz Intelligent surveillance
management software**

User Manual

V1.0

© 2001-2016 Anviz Technology Co., Ltd.

Contents

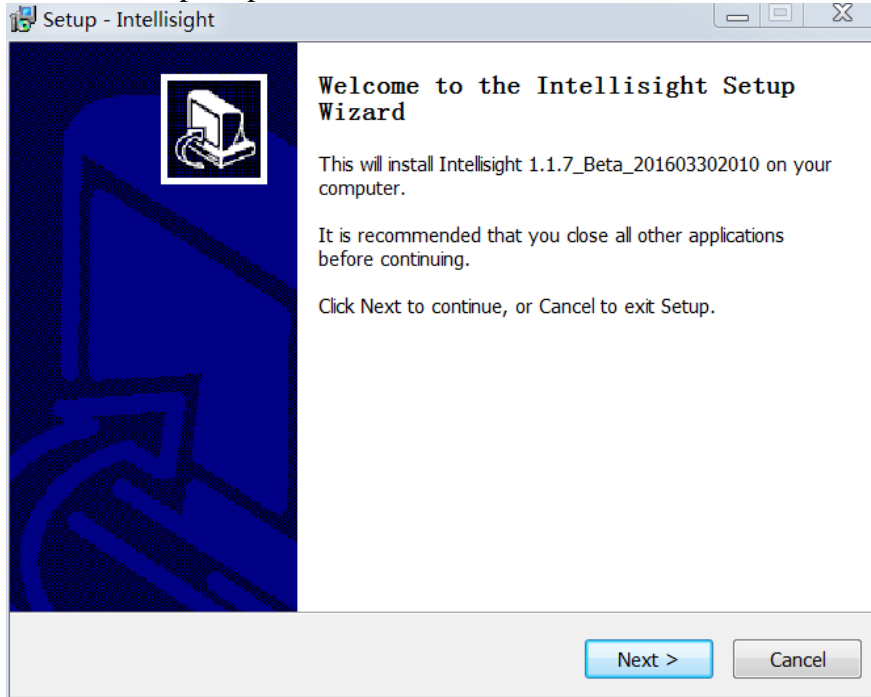
Installation.....	2
Log in window	5
Main menu	6
Live	7
Playback	8
Map	9
Alarm	10
Device	11
System Log	13
Setting	14

Installation

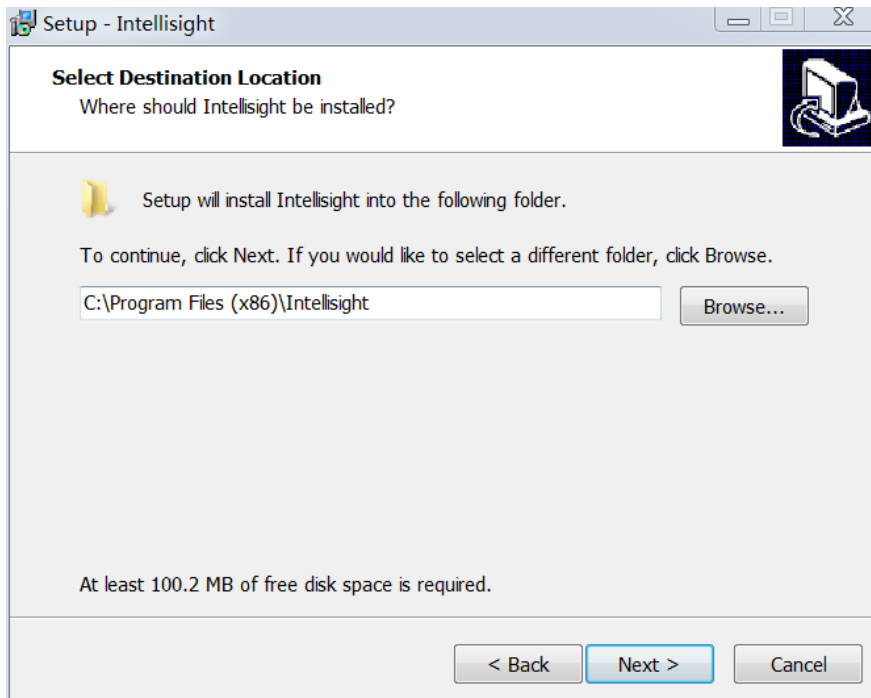
1, Double click the .exe file to install:



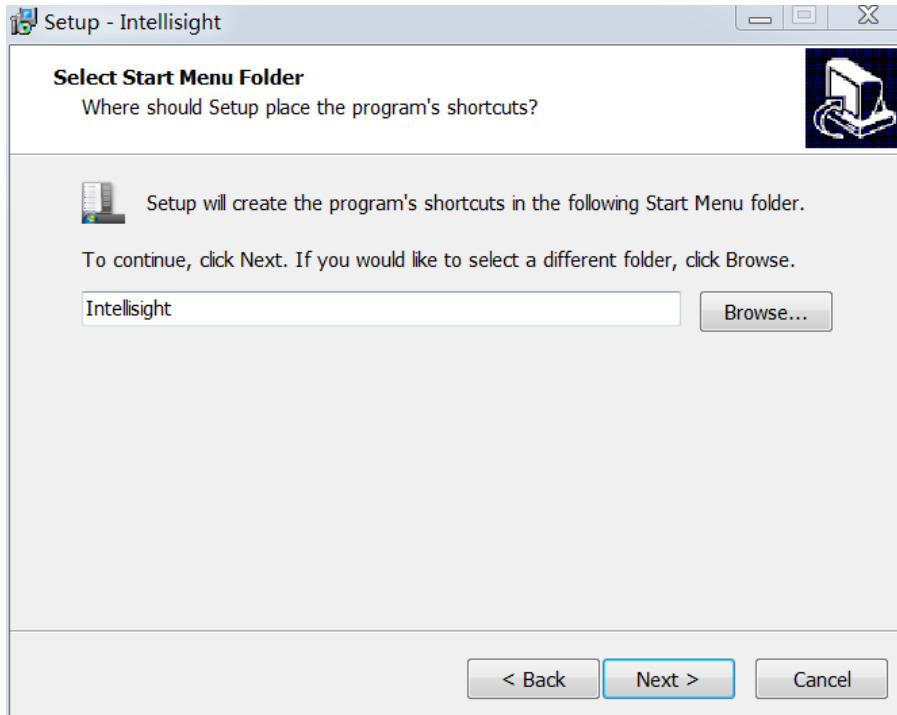
2, Follow the prompts, click “Next”:



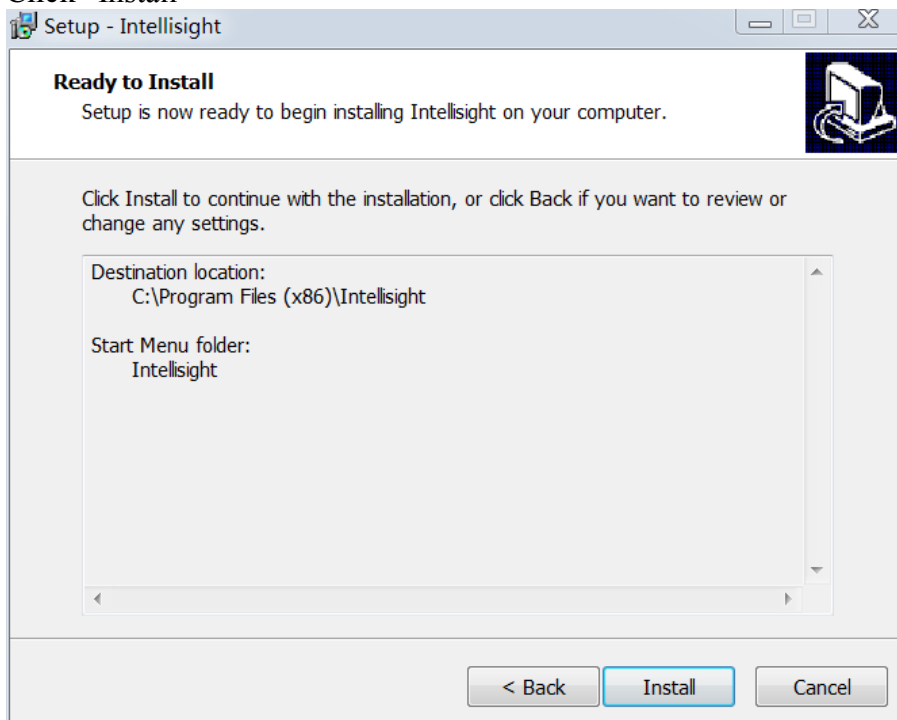
Click “Next”



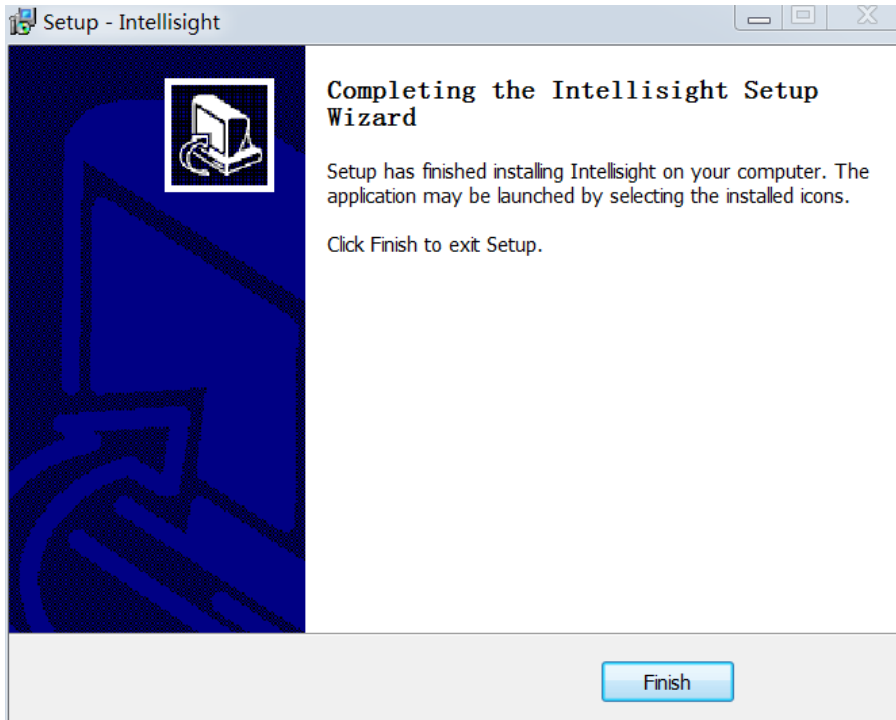
Click “Next”



Click "Install"



Click "Finish" to complete the installation.

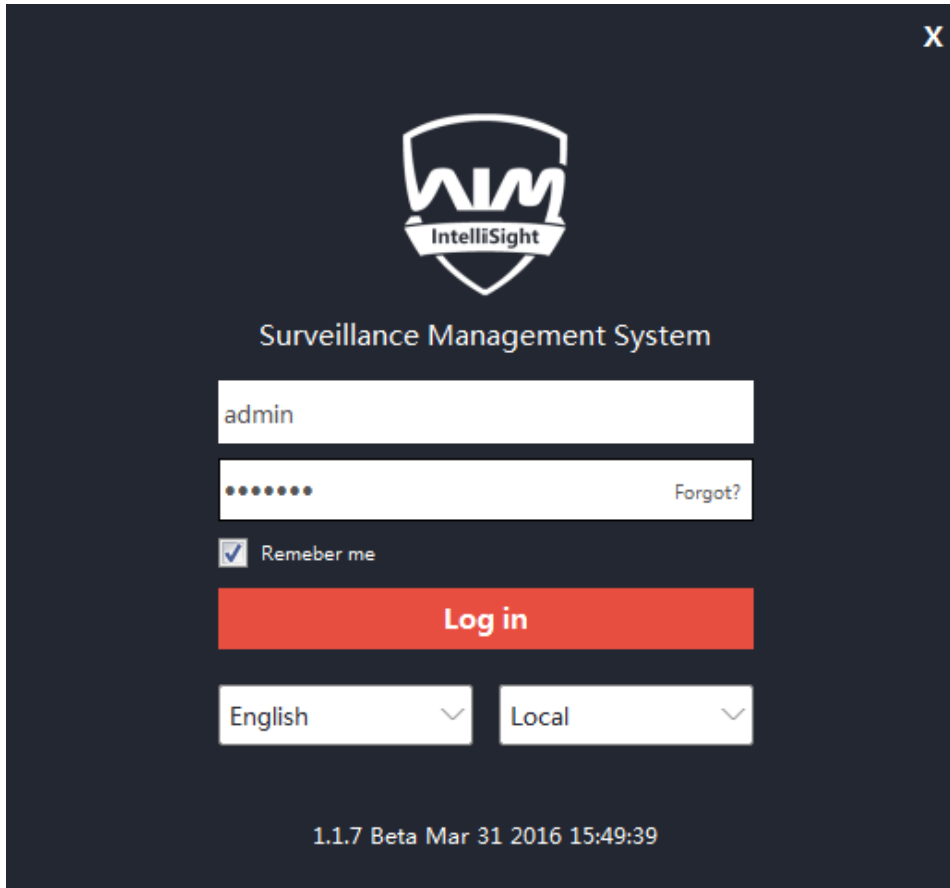


3, Click the IntelliSight shortcut on the desktop to open the software (or through the Start menu and enter C: \ Program Files (x86) \ Intellisight directory to open the software) :

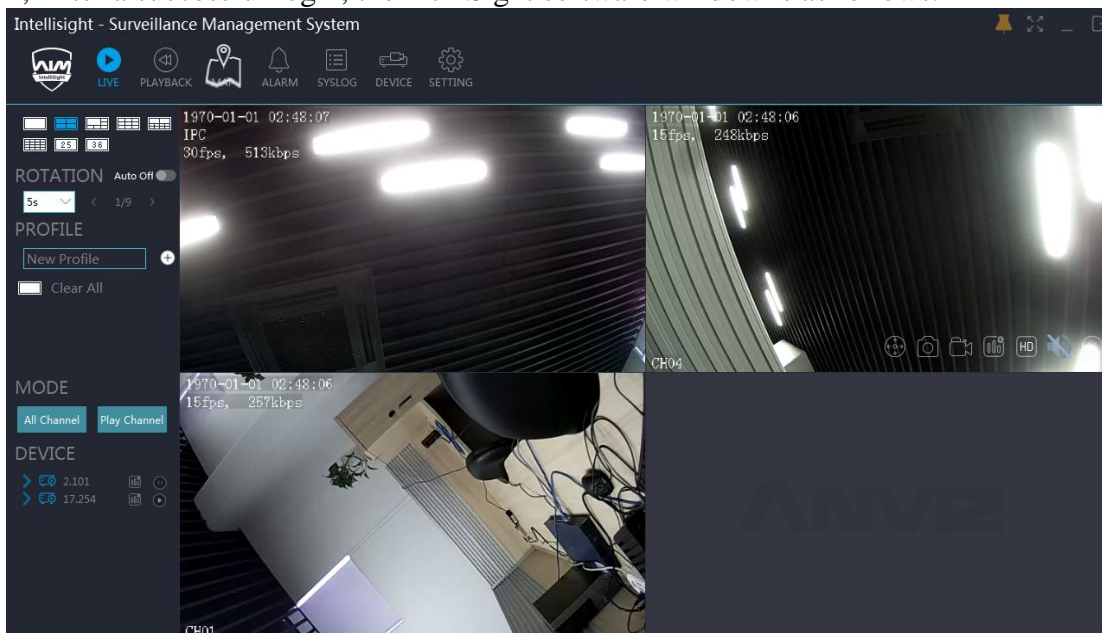


Log in window

- 1, Default Admin account: By default, the user name and password are “admin”.
Check the “Remember me” to save the LOGIN information.



- 2, After a successful login, the IntelliSight software window is as follows.



Main Menu

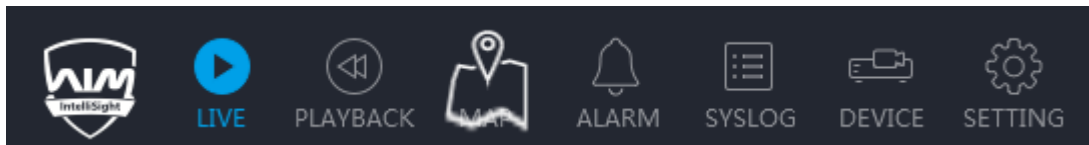
1, Top menu:



Control buttons:

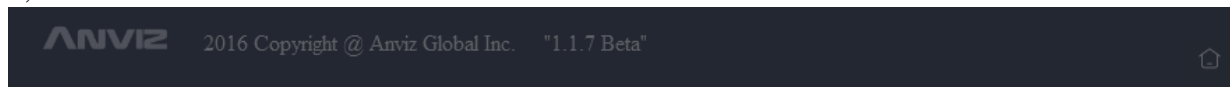


There are several buttons on the right up corner: Help; Pin/Unpin; Full Screen; Minimize; Close.



Main menu: LIVE, PLAYBACK, MAP, ALARM, SYSLOG, DEVICE, SETTING.

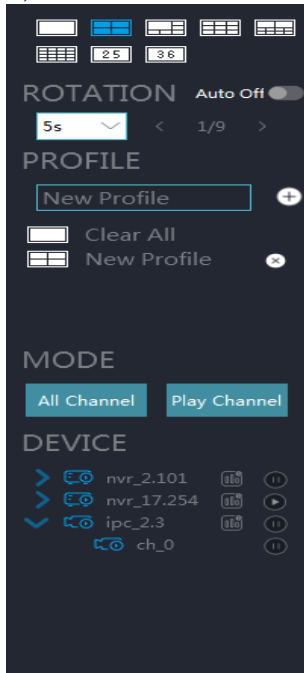
2, The bottom interface is as follows:



The software version information is displayed on the bottom of the window.

Live

1, Sub-menu on the left side:



The LIVE Sub-Menu has the following features:

- 1) View mode: Click the view mode buttons to select the a single channel display or a multi-channel display;
- 2.Sequence: Click Auto On/Off button to start/stop sequence mode; Set the sequence dwell time; Switch to forward or backward channel;
- 3) Profile: Edit profile name; Add a profile; Clear all profiles; Play the selected profile; Delete the selected profile;
- 4.Display mode: Display all channels or display one channel;
- 5.Device: Device list; Double click to play the selected camera, Play/Stop;

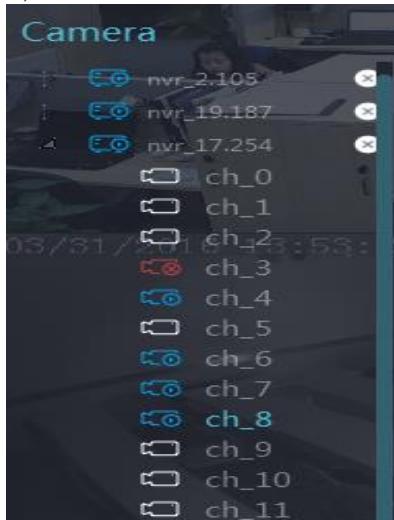
2, Live video window:



There are 5 buttons on the bottom of Live video window: Open dynamic zoom mode; Snapshot; Real-time Backup; Switch to Web page; Switch to HD display; Mute/unmute audio; Close the Live video window.

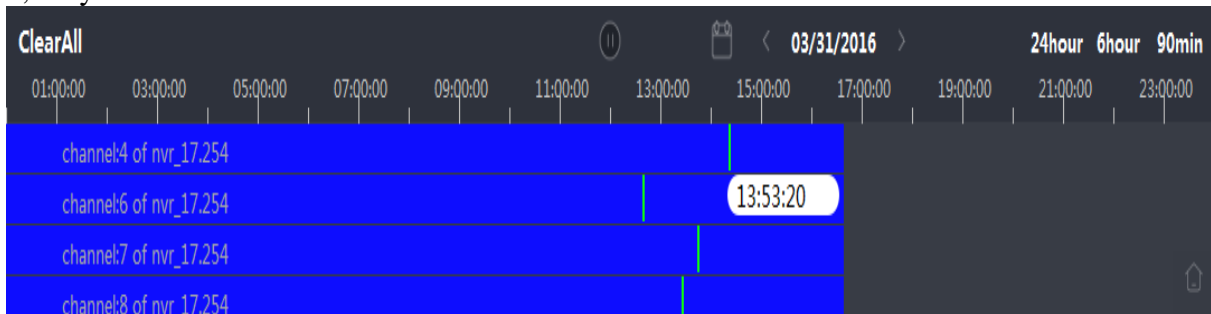
Playback

1, Device List:



Double click channel number: Start/Stop to play the playback file;
 Drag the device name: Search the playback file;
 Delete button: Delete the selected playback file;

2, Playback timeline:



1)Clear All: Stop play back and delete all the playback file;
 2)Play/Stop: Play or Stop the playback file;
 3)Date: Select the date to search for the playback file;
 4)Move forward/backward date: Move forward/backward date to search for the playback file;
 5)Time period: Select the time period as 24 hours; 6 hours, 90 minutes;
 Remind: You can also click the time bar to search for the playback file to play.

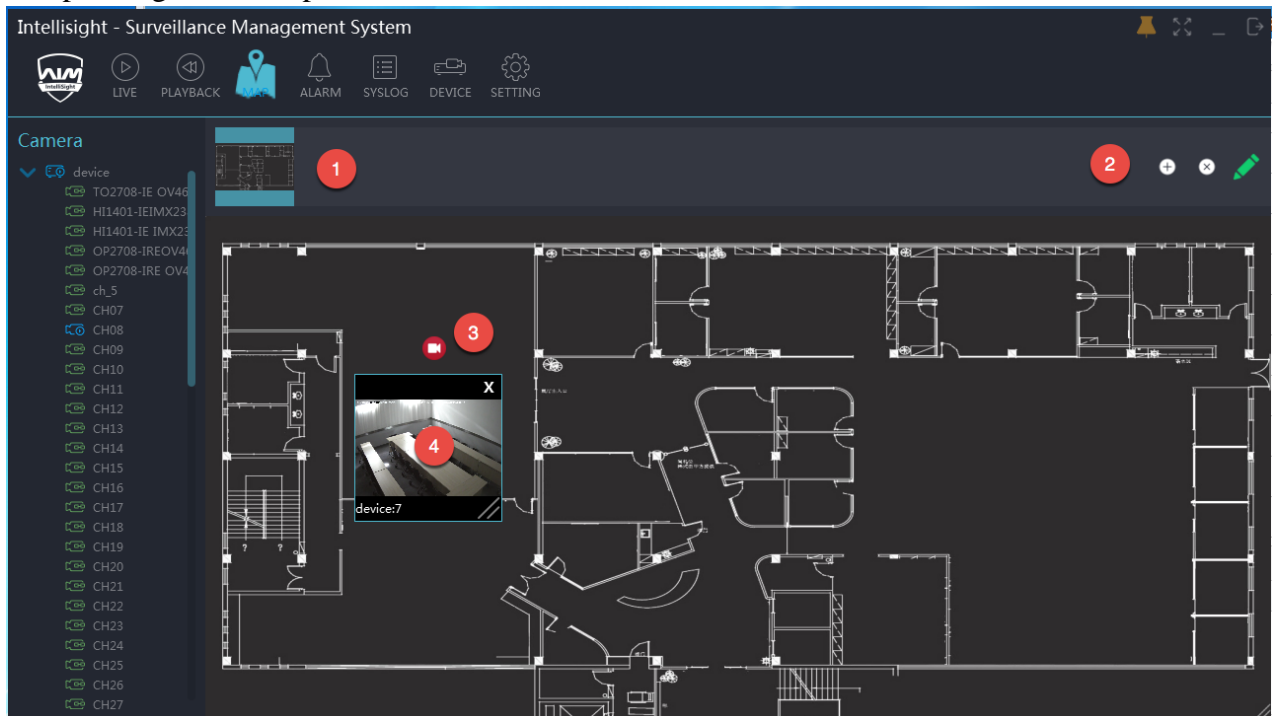
Map

1, Device List:



Drag the device channel number from the device list to the map to show the camera location.

2, Operating on the map:



- 1)Map List: The Map icons will show on the top line of the window;
- 2)Map control buttons: Add; Delete; Edit;
- 3)Map operation window: Double click the camera icon to play the video; Right click the camera icon to delete the icon; Drag the camera icon to move;
- 4)Video playing window: Close the window; Adjust the window size; Drag to move the window.

Alarm

All Devices					Motion	Covered	Loss	Marked
Time	Device	Type	Snapshot	Operate				
2016-03-31 14:29:55	device:chn_0	Loss	SnapShot/device_0_20160331142956.jpeg	→ 🗑️ ☆				
2016-03-31 12:17:13	device:chn_1	Covered	SnapShot/device_1_20160331121713.jpeg	→ 🗑️ ☆				
2016-03-31 12:16:12	device:chn_1	Covered	SnapShot/device_1_20160331121612.jpeg	→ 🗑️ ☆				
2016-03-31 12:16:03	device:chn_1	Covered	SnapShot/device_1_20160331121603.jpeg	→ 🗑️ ☆				
2016-03-31 10:32:17	device:chn_1	Motion detective	SnapShot/device_1_20160331103217.jpeg	→ 🗑️ ★				
2016-03-31 10:07:58	device:chn_1	Motion detective	SnapShot/device_1_20160331100758.jpeg	→ 🗑️ ★				

- 1) Device list: Highlight the device to show the alarm information;
- 2) Alarm type buttons: Motion; Covered; Loss; Marked;
- 3) Alarm control buttons: Forward the alarm information; Delete the alarm info; Mark the alarm info.

Device

The screenshot displays two tables within a software interface. The top table, titled 'Managed Devices Number: 3', lists three devices with columns for ShowName, Ip, StreamPort, WebPort, SerialNo, Mac, User, Pwd, Version, Type, ChnCnt, Status, and Del. The bottom table, titled 'Searched Devices Number:3 (managed:0)', lists three devices with columns for Type, Sn, Version, ChnCnt, Mac, Ip, StreamPort, and WebPort. Both tables include an 'Add Device' button above and a 'Research' button below.

ShowName	Ip	StreamPort	WebPort	SerialNo	Mac	User	Pwd	Version	Type	ChnCnt	Status	Del
nvr_2.105	192.168.2.105	6258	80	CM1423214110...	00:22:ca:88:01:36	admin	•••••	128	H2-D4	8	loginok	Del
nvr_19.187	192.168.19.187	6258	80	CM1423215032...	00:11:22:33:44:55:66	admin	•••••	126	H2-D4	4	loginok	Del
nvr_17.254	192.168.17.254	6258	80	CM1415115061...	00:11:22:33:44:55:66	admin	•••••	236	VR6800	32	loginok	Del

Type	Sn	Version	ChnCnt	Mac	Ip	StreamPort	WebPort
H2-D4	CM142321411030002	128	8	00:22:ca:88:01:36	192.168.2.105	6258	80
CM1403E1	CM140341410150089	233	0	00:22:CA:88:01:B7	192.168.2.3	6258	80
CM1403E1	CM140341410150079	233	0	00:22:CA:88:01:AD	192.168.2.2	6258	80

There are two device list: Added device list. Searched device list.
Features:

1) Add a device: Click the Add Device button to open an add/edit device window:

The screenshot shows a dialog window titled 'add' with an 'edit' button and a close 'X' button. The dialog contains the following fields:

- DevName: device
- Ip: 192.168.2.105
- Stream Port: 6258
- Web Port: 80
- UserName: admin
- Password: admin
- Serial: CM142321411030002
- Mac: 00:22:ca:88:01:36
- Type: H2-D4
- Soft Version: 128

At the bottom of the dialog are 'Done' and 'Cancel' buttons.

2) Edit a device: Double click a added device to open an edit device window:

edit preview

Dev Name: nvr_17.254 **Set Ipc**

Ip: 192.168.17.254

Stream Port: 6258

Web Port: 80

User Name: admin

Password: anvizpc

Done **Cancel**

3. Edit the IPC info: Click the IPC button to open an edit window:

Remote Setting Search devices

Idx	Ip	StreamPort	Protocol
1	192.168.2.4	6258	CMI
2	192.168.2.2	6258	CMI
3	192.168.2.3	6258	CMI
4	192.168.2.222	6258	CMI

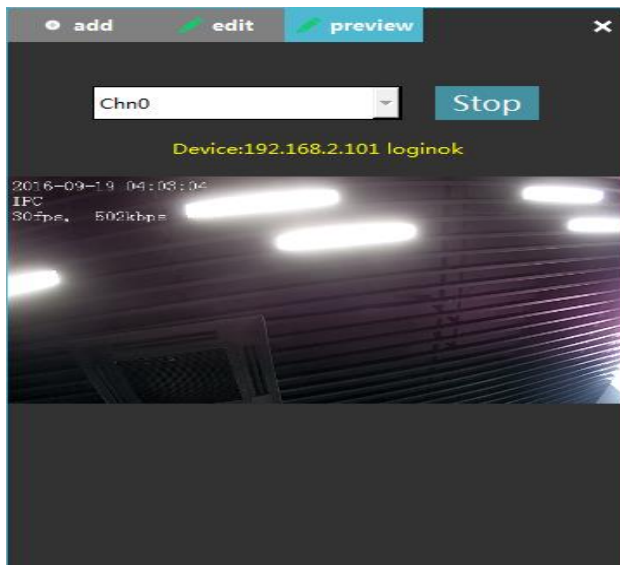
Search **Add**

Existing devices

Channel	Ip	StreamPort	Protocol
Chn0	192.168.17.51	6258	CMI
Chn1	192.168.17.56	6258	CMI
Chn2	192.168.17.53	6258	CMI
Chn3	192.168.17.54	6258	CMI
Chn4	192.168.17.55	6258	CMI
Chn5	192.168.17.170	6258	CMI

Manual Add **Delete** **Edit**

4. Preview the camera:



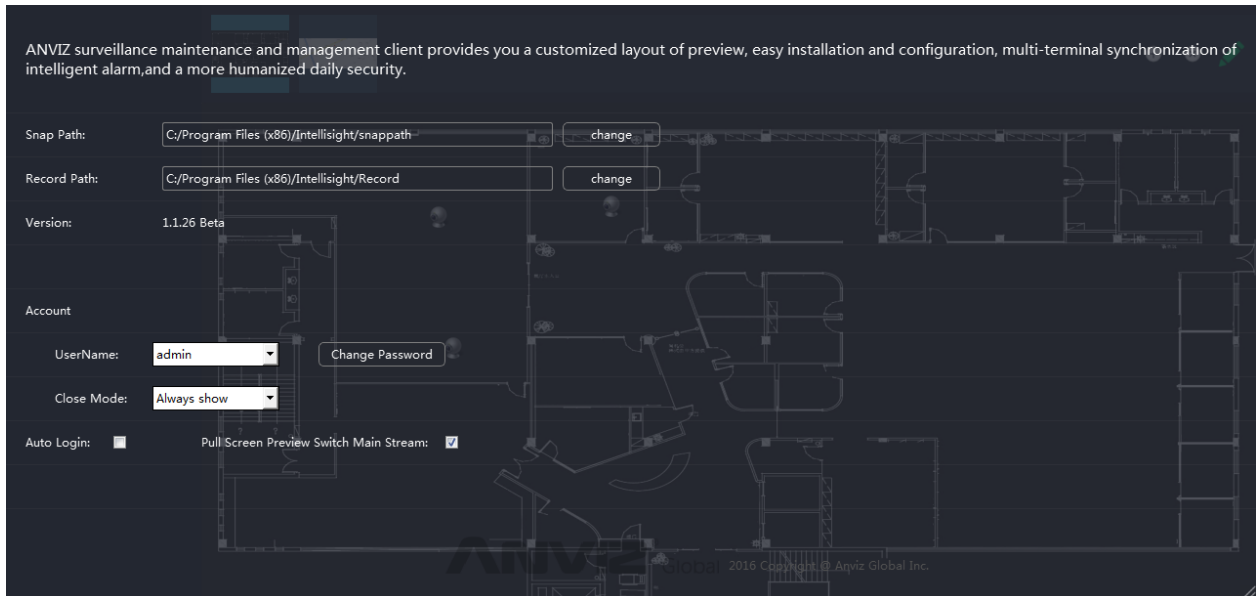
5. Search the device: Click the “Search” button and the search result will show on the device list:

System Log

Time	User	Active Type	Info
2016-03-31 16:51:39	admin	Cable broken	nvr_17.254:chn_1
2016-03-31 16:51:33	admin	Login	
2016-03-31 16:38:34	admin	Cable broken	nvr_17.254:chn_1
2016-03-31 16:38:27	admin	Login	
2016-03-31 16:31:18	admin	CONTROL_DISCONNECTED	nvr_17.254:chn_24
2016-03-31 16:26:07	admin	CONTROL_DISCONNECTED	nvr_17.254:chn_20
2016-03-31 16:17:38	admin	CONTROL_DISCONNECTED	nvr_17.254:chn_4
2016-03-31 16:17:15	admin	Cable broken	nvr_17.254:chn_1
2016-03-31 15:57:46	admin	Login	
2016-03-31 15:41:40	admin	Login	
2016-03-31 15:39:50	admin	Logout	
2016-03-31 15:39:21	admin	Login	
2016-03-31 15:37:17	admin	CONTROL_DISCONNECTED	device:chn_1
2016-03-31 15:37:15	admin	CONTROL_DISCONNECTED	device:chn_1

Feature: View the system log forward or backward; View the system log by date.

Setting



Feature:

- 1)Set the snapshot file path;
- 2)Set the record file path;
- 3)View the version information;
- 4)Change the password;
- 5)Select the Close Mode as Always Show; Auto Exit; Auto Minimize;
- 6)Select On/Off Auto Login.

Change the password window:

