

ANVIZ[®]

The Global Leading Supplier of Intelligent Security



Biometrics



RFID



Surveillance

About us

Established in 2005, Anviz Global is one of the global leading supplier of intelligent security who covers the solution of Biometrics, Surveillance and Integrated security. We devote ourselves into providing the safer, smarter integrated security solution by our edge technologies and innovative heart. And our solution is widely used in government, retail, industrial, commercial, educational and medical applications.

With headquarter in US, R&D center in Shanghai, and production base in Yancheng city, China, our products and solutions equipped with more than 50 million end users by 2000 integrators and installers among more than 100 countries.

We keep creating values to our shareholders, partners and employees, also take energy saving and environment protecting responsibilities to the society.

US Headquarter



Shanghai Office



Production Center

10+

years R&D and
production experiences

50

thousand+ square
meters' production base

2000+

distributors and integrators
among 100+ countries



About us

One stop integrated security system	01-02
Biometric Management System	03-06
CloudClocking	07-08
Professional Surveillance VMS platform	09-12



Index



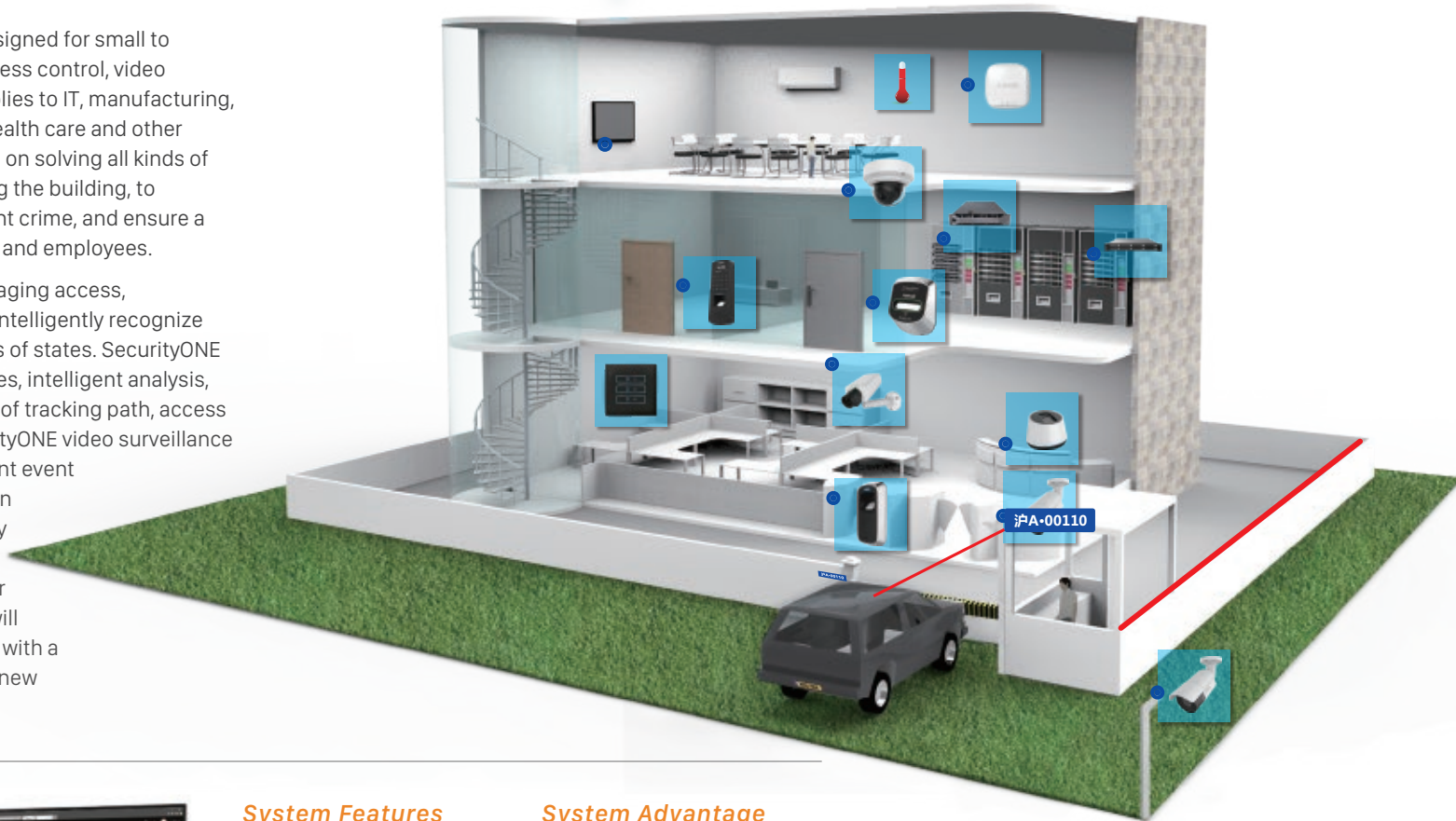
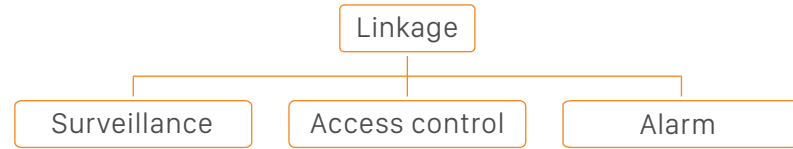
SecurityONE

Intelligent Security System

What is SecurityONE?

SecurityONE is an integrated solution designed for small to medium-sized enterprises, including access control, video surveillance and alarm system, etc. It applies to IT, manufacturing, retail, finance, government, education, health care and other commercial places. SecurityONE focuses on solving all kinds of security problems within and surrounding the building, to enhance the ability to monitor and prevent crime, and ensure a safe environment for enterprise property and employees.

Different from the traditional way of managing access, SecurityONE access control system can intelligently recognize entrance, exit, force open and other kinds of states. SecurityONE can link with video to extract scene images, intelligent analysis, cloud upload, to realize the data analysis of tracking path, access recording and other data analysis. SecurityONE video surveillance supports intelligent recognition, intelligent event analysis, and video upload of event screen shots to the cloud, remote surveillance by a remote client and emergency alarm linkage. The Cloud Storage can meet your needs anytime, anywhere. SecurityONE will continue to be committed to provide you with a one-stop service to open the door to the new world of security.



System Features

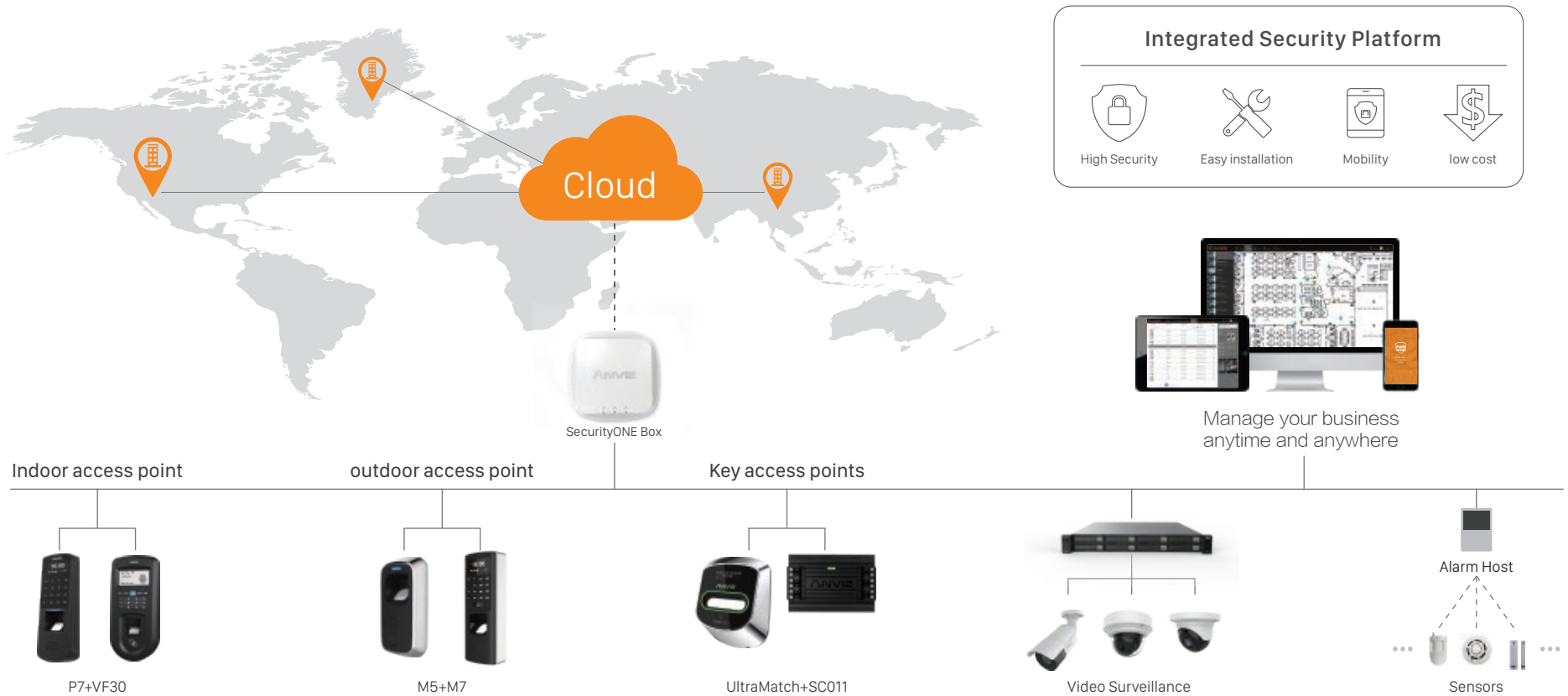
- Instant video monitoring
- Cloud storage and video access control linkage
- E-Map operation
- Intelligent recognition
- People, assets, and environment management

System Advantage

- Cloud application
- Convenient access and operation
- Instant alarm push
- Lower cost

System Operation Way

Based on Powerful Cloud Server, SecurityONE is compatible with various network environment and can easily pick up info from the cloud server. Using distributed cloud structure, can extent branches upon requirements. Below is the detail introduction about how SecurityONE works.



Cloud Server

Manage all the data and compatible with various network environment, easily for users chasing the info.

SecurityONE Box

SecurityONE Box is the control host which link all the security devices and communicate with cloud server, and also support off-line work, ensure the reliability of the system.

Video Surveillance

The CCTV cameras, NVR can link with access control, alarm host and promote video clip and snapshot for any event.

Access control

Manage visitors, staff's access by Internet, and realize anti-pass back, interlock functions, trigger the camera to take image instantly.

Alarm Host

SecurityONE can integrate main brand alarm host and can integrate our access control and CCTV devices and increasing the management efficiency.

Web based management system

all the management of SecurityONE is based on web, and support all remote management functions.



CrossChex

Multi-Biometrics System

Anviz Smart Biometrics terminals integrates global leading technologies and multi patents in hardware and software, compatible with Anviz access control, time & attendance devices. The solution can be widely used at government, retail, industrial, commercial, financial ,educational and medical places.

BioNANO Core Algorithm



Anviz biometric technologies are widely used in our fingerprint identification, face recognition and iris identification products. As one of our key technological achievements, the biometric identification algorithm BioNANO, was developed in house by our engineers and is now the algorithm used in all Anviz biometric products.



- Suitable for both wet and dry fingers
- Automatically heals the broken lines in fingerprint images
- Extraction of features in worn fingerprints
- Fingerprints template auto update



- Non-contact
- Fast speed and easy to use
- Suitable for different lux application



- No way to fake, highest security
- Most accurate, convenient, and reliable
- Touchless verification, most sanitary

Anviz Hermetic AFOS Fingerprint Sensor
Waterproof, dust proof and scratchproof IP65 fingerprint sensor.

Fingerprint Template Auto Update
Auto update means the previous lower quality fingerprint template will be automatically replaced by the new higher quality one during fingerprint verification.

High Speed Matching
Incredibly fast matching algorithm will complete a 1:1 match less than 0.5 sec and 10000 users less than 1 sec.

Multi-communication Mode
TCP/IP, Mini USB, RS485, Wiegand, GPRS, WIFI and so on.

Webserver
Visit the device directly via the network. Setup and search the record from the device.

Wide Temperature Circuit Design
Wide temperature circuit will ensure the device is suitable for different complex environment.

Living Recognition
Living recognition can get fingerprint data from beneath surface of the skin so that dryness or even damaged or worn fingers create no problems for reliable reads.

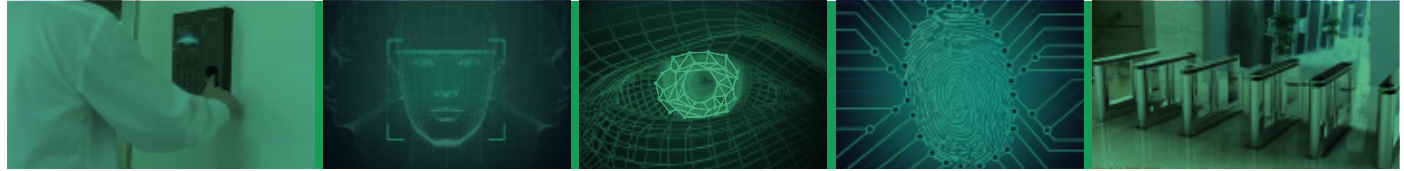
Dual Storage
Dual storage ensures the data is more secure.

Applications

Anviz Crosschex products can be an independent solution for access control and time & attendance or integrates with other Anviz devices such as CCTV camera and security lock, to be an integrated security solution, to meet various requirements from our global clients.

What is Crosschex

CrossChex is an intelligent management system of access control and time & attendance devices. The user-friendly and interactive design makes this system easy to operate, the powerful function makes this system realize the management of department, staff, shift, payroll, access authority, and exports different time & attendance and access control reports, satisfying various requirements in different complicated environments.



Why choose Crosschex?

Features

- Manages departments and employees.
- Manages devices and access restrictions.
- Manages schedules, shifts and reports.
- Rules out unauthorized overtime.
- Imports/exports data in various file formats, such as CSV, XLS/XLSX, PDF, etc.
- Exports attendance reports to 3rd party accounting/payroll software.
- Sends reports via email.
- Connect to SQL database or Access database for easy installation and maintenance.

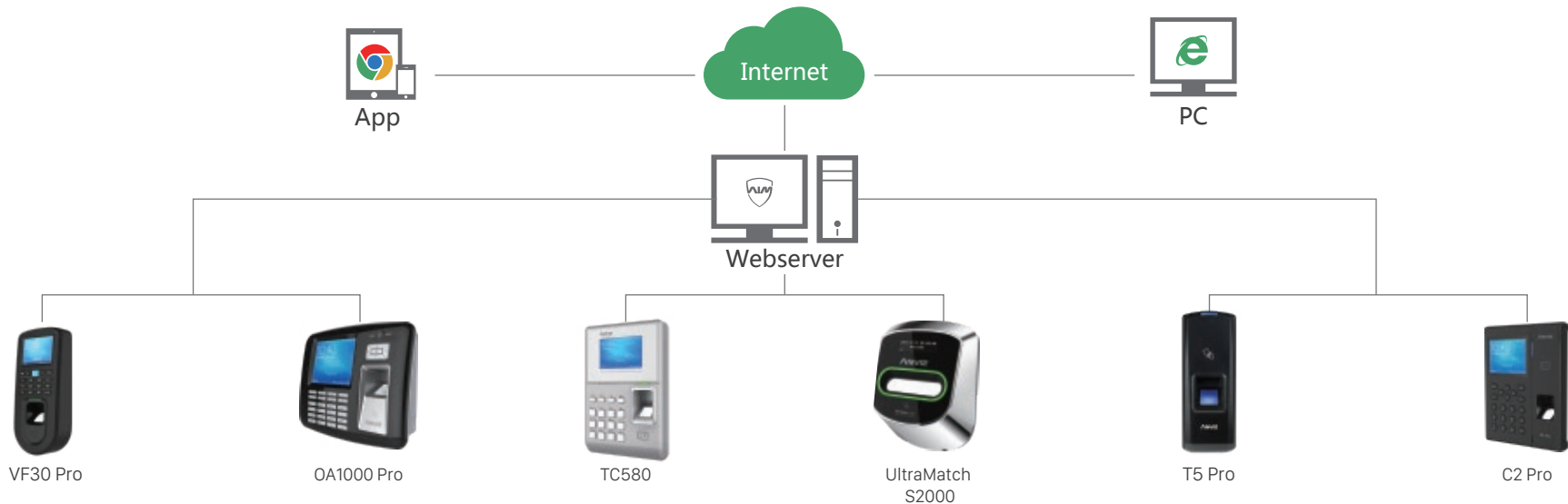
*Support all Anviz Biometric/RFID access control and time & attendance devices.

Desktop version

For SMB access control and time attendance management.

Web based

Manage on web anywhere with a PC .



Standalone Access Control

M3 (Outdoor RFID Solution)



- 32-Bit High Speed CPU
- Metal Case, Water & Dust Proof
- Max 3,000 Users, Max 3,000 Cards, 50,000 Records
- Touch Activated Keypad
- RS485, Mini USB, TCP/IP, Wiegand Out
- Direct Lock Control
- LF/HF Dual Frequency RFID Card Reader
- Tamper alarm
- IP65

M5 Pro (Outdoor Reader/Controller)



- 32-Bit High Speed CPU
- Metal Case, Water & Dust Proof
- Max 3,000 Users, Max 3,000 Templates, 50,000 Records
- Fingerprint Reader/Touch on Activation
- RS485, Mini USB, TCP/IP, Wiegand Out, Relay Out
- FP, Card
- Standard EM Card
- Tamper Alarm
- IP65, IK10

P7/M7 (Outdoor Solution)



- 32-Bit High Speed CPU
- Max 3,000 Users Max 3,000 Templates, 200,000 Records
- Fingerprint Reader, Touch on Activation
- RS485, Mini USB, TCP/IP
- PoE (IEEE802.3af)
- LF/HF Dual Frequency RFID Card Reader
- Group, Time Zone, Direct Lock Control,
- Scheduled Bell, Wiegand In/Out, Door Sensor
- IP65 IK10 (For M7 only)

C2 Slim (IP65 Controller)



- Max 3,000 Users Max 3,000 Templates, 200,000 Records
- Fingerprint Reader, Touch on Activation
- RS485, PoE TCP/IP
- PoE (IEEE802.3af)
- Standard EM Card, Optional Mifare Card/HID iClass
- Group, Time Zone, Direct Lock Control,
- Wiegand In/Out, Door Sensor
- IP65

VF30 Pro / T60 Pro (Indoor access control)



- 1.0Ghz High Speed CPU
- Max 3,000 Users, Max 3,000 Templates, 50,000 Records
- Fingerprint Reader, Touch on Activation
- RS485, Mini USB, PoE-TCP/IP
- Group, Time Zone, Direct Lock Control, Scheduled Bell, Message Function, Relay Out,
- Wiegand In/Out, Doorbell, Door Sensor
- Standard EM Card, Optional Mifare Card
- Card, ID+PW, PW+Card
- Optional Outdoor Waterproof Cover
- IP53

C2 Pro (Professional Fingerprint & Card Terminal)



- Linux Platform
- Max 10,000 Users, Max 10,000 Templates 100K Records
- Dual-Core 1GHz Processor
- Less than 0.5s Verification
- 3.5" TFT LCD
- Fingerprint Reader, Touch on Activation
- Infrared Optical Imaging Technology
- Optional RFID Reader Modules HID iClass EM / MIFARE)
- PoE-TCP/IP, WiFi, RS485/USB Host
- Inbuilt WebServer
- Relay Out

C2SR (IP65 Reader)



- Wiegand 26/34
- Power Supply 12V DC, <90mA
- Operating Frequency LF or HF
- Operating Temperature: -25 °C~60 °C
- Operating Humidity: 20%-80%
- IP65

A380 (Color screen)



- Linux platform
- Max 10,000 Users, Max 10,000 Templates, 200,000 Records
- Dual-Core 1 GHz processor
- Identification time less than 0.5s
- 3.2" TFT LCD
- Touch-activated fingerprint sensor
- Infrared finger detection technology
- Standard EM Card
- TCP / IP & WiFi, RS232, USB Host
- Built-in WebServer
- 1 relay for Belling and Connection to the Access Control System

OA1000 Pro (Industry Design Award)



- Dual Core 1.0GHZ High Speed Processor
- Anviz AFOS Fingerprint Sensor
- 10,000 Users, 100,000 Logs
- Linux, 3.5" Samsung TFT LCD, 1.3MP camera
- Display Fingerprint & User Picture, Snapshot
- Employee Self-Service Record Inquiry
- RS232, RS485, USB Host, TCP/IP, Optional WIFI/3G
- Dual Relays Out, Wiegand In & Out, 16 Groups, 32 Time Zones
- Standard EM Card, Optional HID iClass / Mifare Card Reader

TC580 (PoE)



- High-speed processor Dual Core 1.0 GHz
- Max 10,000 Users, Max 10,000 Cards, 200,000 Records
- Linux, 3.2 TFT LCD
- Employee Self-Service Record Inquiry
- RS232, RS485, USB Host, PoE, TCP / IP, WiFi,
- Optional 3G
- Wiegand Input, Wiegand Output
- Internal Webserver
- Groups, Time Zones, Customized Messages,
- Programmed sirens, Relay output
- Supports EM Card, Optional Mifare Card

Face Recognition System

FacePass 7



- 3,000 Users, 3,000 Cards, 100,000 Records
- Three Identification ModeFace, Card, ID+PW
- Energy Saving Auto Wake/Sleep
- Voice and LED Prompt
- 3.2" HD TFT Touch Screen
- USB host
- WiFi, TCP/IP Connectivity
- Relay Out, Wiegand Out
- Webserver

Iris Recognition System

UltraMatch S2000



- Dual Core 1GHz CPU
- Linux OS
- Max 2,000 Users, Max 100,000 Records
- OLED Screen
- TCP/IP, RS485, WiFi
- Inbuilt Webserver, Online Registration
- Wiegand Out
- RFID
- Standard EM CARD Reader

APPLICATION SCENE



About CloudClocking

CloudClocking is an intelligent management solution for time & attendance by providing a real-time, direct data transfer from your biometric time & attendance device to your cloud platform. A user-friendly and interactive online platform provides a clear, easy to operate time & attendance solution accessible from any web-enabled device. Powerful functions enable efficient management of departments, staff scheduling, payroll and access authority, covering different company requirements across a variety of environments and multiple locations.



Manage all of your company departments and employees



Manage all of your company devices



Manage all of schedules, shifts and reports



Imports/exports data in various file formats, such as CSV, XLS/XLSX, etc



Exports attendance reports to 3rd party software



Browser - based operation, support Mac Win Linux



Different **Working** Same **CloudClocking**

Easily collate time & attendance data from multiple locations. Optimises remote management and collation of data for chain organizations.





IntelliSight

Integrated Video Management Platform

Anviz is committed to providing video surveillance services based on artificial intelligence algorithms, unique hardware design, and customization software services. With 13 years of deep development, our video product line covers for small and medium scenarios and special scenarios such as communities, factories, schools, transportation, commerce, and industry.

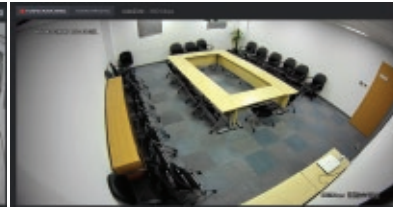
Core Technologies

Smart Stream Technologies

Analyzing the static and dynamic image automatically and switching the stream rate, up to saving 30% storage compare to current H.265+.



Outdoor big scene (968kbps)



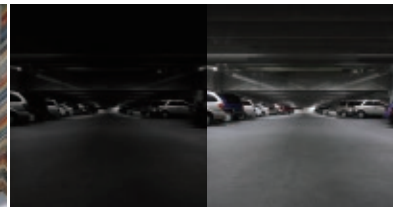
Indoor small scene (360 kbps)

AI+ISP imaging algorithm

Analyzing the environment automatically and optimize the image quality automatically.



Normal VS AI+WDR



Normal VS AI+starlight



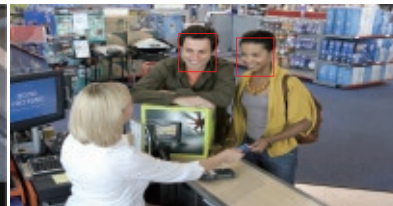
Normal plus AI+defog

RVI Algorithm

RVI Algorithm is the core integration functions for people, car, and object recognition and other smart functions.



LPNR technology



Race recognition

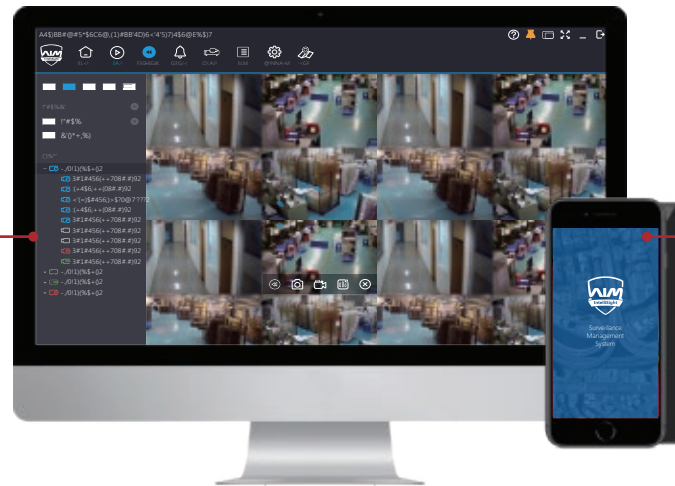
IntelliSight VMS

IntelliSight is an application software matched with embedded network surveillance devices launched by ANVIZ. It can be used with NVR, IPC, network storage etc. Thanks to IntelliSight, you can easily view live video and dynamic information anywhere in the world over the network, to realize the control and management to the entire security surveillance system. Research and development of IntelliSight emphasizes the simplicity of use and intuition to operate, to ensure everyone can effectively manage events and export HD video quickly. IntelliSight supports all standard PCs and find cameras and NVRs on the network automatically. The setup wizard will guide every step, which enables the system will operate normally within a few minutes.

PC and mobile terminal

PC client terminal

VMS to manage video, record, event, e-map function.



Mobile client terminal

IntelliSight APP to realize device adding, preview video, playback and event alarm management.



Application SCENE

IntelliSight is a VMS perfect suitable for SMB scene like business building, retail shop, hotel, school, etc and we are targeting to keep reliability to all Anviz surveillance products.

Smart Steam Series SMB cameras

EasyView- Priority HD network cameras



HiView- 7/24 all time color camera



JustView Super mini HD network camera



EcoView Professional outdoor camera



- Smart Scene analysis
- Support up to 30 days edge micro SD card storage
- Image Optimizing function
- Support high class audio collection under smart stream function
- lowest under 100 kbps for 2M camera
- Support low lux technology under smart stream function
- Storage saving up to 30% compare to H.265+

Professional Cameras

AroundView



Openview outdoor HD bullet camera



Topview Outdoor Dome HD camera



Indoor lens exchangeable box camera



- Automatic Scene analysis
- Starlight 0.001Lux
- Super WDR 122DB
- Motorized 4X lens
- IP66, IK10 vandal and water proof
- Dual way audio
- Edge 128GB micro SD card storage
- True 360 degree PTZ function

Smart Storage

Ecostore 2HDD Built-in POE NVR



MiniStore 1HDD NVR



TurboStore 4HDD NVR



EverStore 8HDD Smart NVR



- ACP protocol, one button camera adding
- Smart heating control chip
- Auto HDD safety checking
- Multi channel store and playback
- Email prompt forwarding
- Front plug in HDD design, 3 seconds' exchanging HDD

APPLICATION SCENE





For more information, please visit www.anviz.com or email us at sales@anziv.com

2018© Anviz Global. All Rights Reserved.

Due to the consistent improving of the product, this specification and appearance is subject to change without notice.