

Network Video Recorder

User manual

Introduction

Thank you for using our products, if you have any questions or support needs, please feel free to contact us.

Applicable models

This manual applies to all NVR products of our company

Declaration

We have done our best to ensure integrity and accuracy of the manual content, but also unavoidable to encounter Inaccurate technical issues , product functions does not match the operations or printing errors and so on, if you have any questions or disputes, please refer to our final interpretation.

The products and manuals will be updated in real time, without prior notice.

The contents in this manual are for reference only, and we do not guarantee to be in accordance with the real object.

The parts and accessories mentioned in this manual are for illustrative purposes only and do not represent the configuration of the purchased model.




The default settings

Default administration account : admin.

Default administration password : admin.

Default ip4 address : 192.168.100.218.

Notational Conventions

 <p>Warning</p>	<p>To Indicate that there is middle or low potential danger, if not avoided, may cause minor or moderate injury.</p>
 <p>pay attention to</p>	<p>To indicate there is a potential risk, if you ignore this text, may lead to equipment damage, data loss, equipment Performance degradation or unpredictable results.</p>
 <p>Info</p>	<p>To Represent the additional information of the text, which is the emphasis and supplement of the text.</p>

Index

Product Introduction.....	4
1.1 MiniStore.....	4
1.2 TurboStore.....	5
1.3 EverStore.....	7
Using Instructions	9
2.1 Operating Conventions.....	9
2.2 Switch device	10
2.2.1 Switch.....	10
2.2.2 Shut down.....	10
2.2.3 log in.....	11
2.3 The main interface right-click menu	12
2.4 Common settings.....	14
2.5 IPC Management.....	16
2.5.1 Manually add IPC by CMI protocol.....	16
2.5.2 Through the CMI protocol to modify the IPC network address and a shortcut to add IPC 17	
2.5.3 adding IPC through the Onvif protocol.....	18
2.6 Channel setup.....	19
2.6.1 OSD settings of the NVR Channel.....	19
2.6.2 Occlusion settings of NVR channel video.....	20
2.6.3 set the PTZ parameters of NVR.....	20
2.7 Encoding settings.....	21
2.8 Video settings.....	23
2.8.1 NVR Video parameter setting.....	23
2.8.2 NVR Video program settings.....	23
2.9 event management.....	25
2.9.1 Alarm linkage instructions.....	25
2.9.2 Description of the effective time of various alarm linkage strategy	26
2.9.3 Motion Detection Linkage.....	26
2.9.4 Occlusion detection linkage.....	27
2.9.5 Video loss linkage.....	27
2.9.6 Alarm input linkage.....	27
2.9.7 Network Abnormal Linkage.....	28
2.9.8 Hard disk abnormal linkage.....	28
2.10 Network settings.....	29
2.10.1 Basic network settings.....	29
2.10.2 PPPOE Settings.....	30
2.10.3 NTP Settings.....	30
2.10.4 Email Settings.....	31
2.10.5 DDNS Settings.....	31

2.10.6	GB/T28181 Settings	32
2.10.7	Cloud Services Settings	32
2.11	Advanced settings	33
2.11.1	Serial Port Settings	33
2.11.2	Video output	33
2.11.3	Alarm output.....	34
2.11.4	hard disk management	34
2.11.5	User Management.....	35
2.11.6	Automatic maintenance	35
2.11.7	Default parameters.....	35
2.12	Video playback.....	37
2.13	Video backup.....	39
2.14	Maintenance information	40
2.15	Setup Wizard	43
Technical Support	45
3.1	Frequently Asked Questions	45
3.1.1	CMI can find the camera, but can not preview the image after adding it	45
3.1.2	ONVIF can find out the camera, but after adding the camera can not preview images	45
3.1.3	Can not recognize the mobile memory during back up process.....	45
3.1.4	Identify mobile memory capacity errors during backing up	45
3.1.5	Why can not find out an earlier video file.....	45
3.1.6	In the process of upgrading, unplug the memory or restart the device can not boot the device ,how to deal with this	46
3.2	Hard disk space consumption.....	47

Product Introduction

1.1 MiniStore

Front Panel Definitions:



Definition	Features	Status
POWER	Power indicator	Power normal , always bright
NET	Network status indicator light	After network connection, it starts blink, blinking speed depends on network flow amount.
HDD	Hard disk status indicator	Hard disk will blink while identification, blinking speed depends on identification speed.
USB	USB2.0	To connect the mouse to control the operation of the device

Back Panel Definitions:



Serial number	Definition	feature	Serial number	Definition	feature
1	DC12V	DC12V power supply	2	LAN/RJ45	10/100 Adaptive Ethernet interface
3	USB	USB2.0	4	HDMI	High Definition Multimedia Interface
5	VGA	VGA video interface	6	VGA	VGA video interface
7	Mic	Microphone interface	8	Speck	Earphone speaker interface

1.2 TurboStore

Front Panel Definitions:



Definition	Features	Status
POWER	Power indicator light	Power connected ,always bright
NET	Network status indicator light	after network connection,it starts blinking, blinking speed depends on network flow amount.
HDD	Hard disk status indicator	hard disk will blink while identification , blinking speed depends on identification speed.
Switch	Power switch	Physical boot and shutdown
USB	USB2.0	to connect the mouse to control the operation of the device

Back Panel Definitions:



Serial number	Definition	feature	Serial number	Definition	feature
1	DC12V	DC12V Power interface	2	LAN/RJ45	10/100Adaptive Ethernet interface
3	USB	USB2.0 interface	4	HDMI	High Definition Multimedia Interface

5	VGA	VGA video interface	6	Mic	Microphone interface
7	Speck	Earphone speaker interface	8	Fan	drop in temperature

1.3 EverStore

Front Panel Definitions:



Definition	Feature	Status
POWER	Power indicator	Power is normal, always on
	Power switch	Physical boot on shutdown
HDD	Hard disk status indicator	hard disk will blink while identification , blinking speed depends on identification speed.
USB	USB2.0 interface	to connect the mouse to control the operation of the device

Back Panel Definitions:



Serial number	Definition	Features	Serial number	Definition	Features
1	Mic	Microphone interface	2	Speck	Headphone speaker connector
3	RJ45*2	10/100/1000adaptive Ethernet interface	4	VGA	VGA Video interface
5	HDMI	High Definition Multimedia Interface	6	USB*2	USB2.0
7	I/O interface	See the table below	8	Power	Power supply interface

Interface 8 definition

Definition	Features	description
A	RS485+	Standard RS485 positive signal, no internal 120 ohm matching resistor
B	RS485-	Standard RS485 positive signal, no internal 120 ohm matching resistor
G	GND	GND signal,used as the alarm input and RS232 ground
No1-No4/ C1-C4	Switch alarm output	Relay switch output
1-16	Alarm input	Alarm input, the maximum voltage is 16V. Greater than 2V or open circuit will be considered as high, less than 1V will be considered as low.
T	RS232-Tx	RS232 transmission signal
R	RS232-Rx	RS232 reception signal

Using Instructions

2.1 Operating Conventions

Mouse operation instructions		
name	action	Description
Left click	Click	Select and confirm in menu operation.
	Double Click	Preview, playback, single-screen, multi-screen display switch.
Right click	Click	Preview: pop-up menu. Menu: Exit the current menu and return to the preview window. Video playback: Exit the video playback.

2.2 Switch device

2.2.1 Switch



Note

Make sure that the voltage applied to the NVR matches the requirements of the NVR and that the grounding terminal of the NVR is well grounded.

if the Power supply is not normal, The NVR will be unable to work , or even damage the NVR, it is recommended to use a stabilivolt power supply

Specific boot steps are as follows:

- 1> Plug in the power supply.
- 2) Press the "Power On" key on the rear panel, and the interface shown in the following figure will pop up after the device starts



2.2.2 Shut down



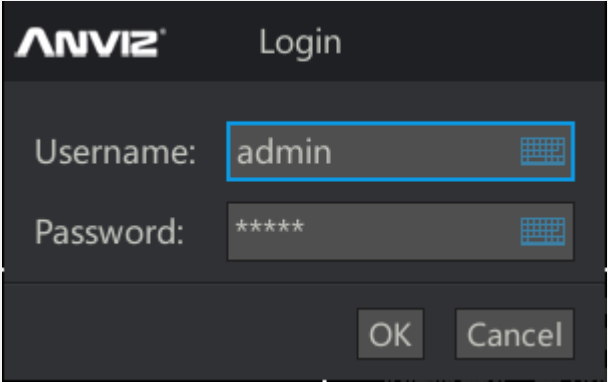
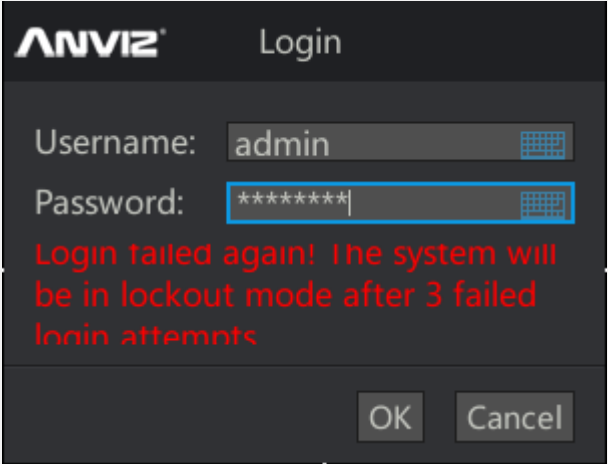
Note

When the system prompts "The system is shutting down ...", please do not press the power "ON / OFF key".

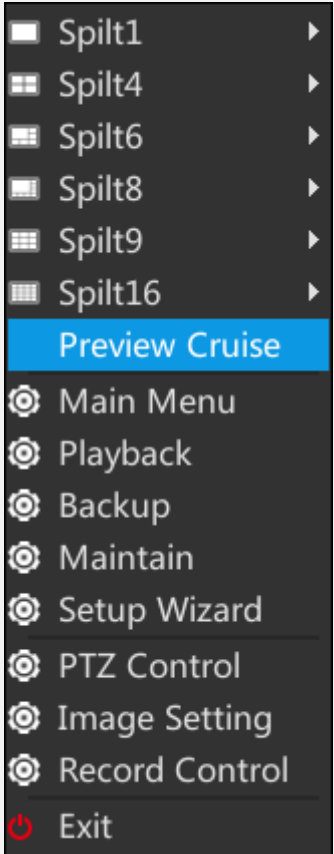
while device is running (especially while recording) Do not force the device to shutdown (Disconnect the power supply directly) .

Soft shutdown / logout / restart	
<p>1> Select [Main Menu] -> [Exit] Pop up on the right is shown in the picture. 2> Click the [Shutdown] button to turn off the device. 3> Click the [Restart] button, to reboot. 4 Click [Log out] button, to exit the current login account.</p>	

2.2.3 log in

User login / password protection	
<p>User login :</p> <p>After Equipment normal boot , you need to log in before operation, The system provides the corresponding functions according to the login access rights. The default user name is admin and the password is admin. After login, please modify the user name and password as soon as possible.</p>	
<p>password protection :</p> <p>If the entered password was wrong 3 times, the alarm will be prompted and locked for 10 minutes.</p>	

2.3 The main interface right-click menu

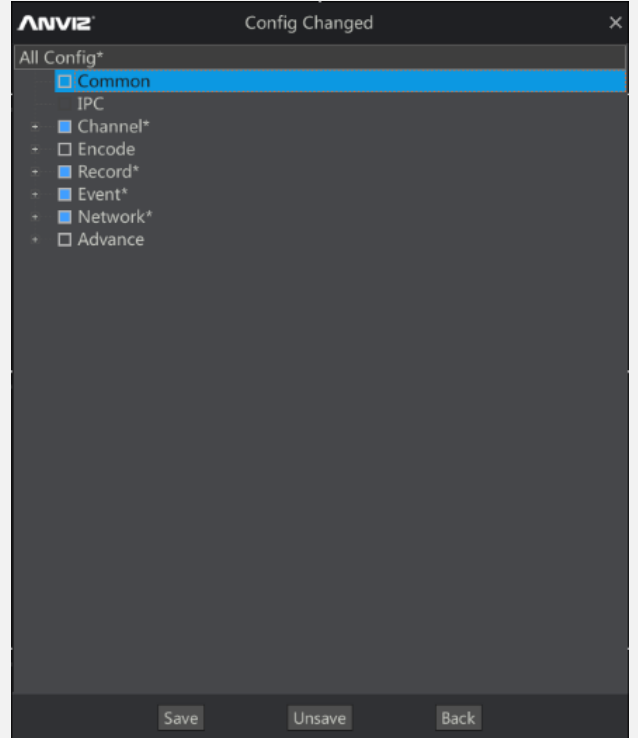
Right click in the main interface will pop up [main interface right-click menu]	
1> Single-screen / four-screen / six-screen / eight-screen / nine-screen / sixteen screen split screen selection, you can configure the interface. After selecting a single page, you can select one of the 32 channels to display. After selecting the four pictures, you can select channel 1 - 4. or channel 5 - 8 and so on, the other split screen selection and so on.	
2> Preview Tour: This is an enable switch. Left click it will show or remove the image √. Display √ represents the preview round rotation functions. The specific rotation time and rotation time channel are configured by entering the main menu.	
3> Main Menu: Left click to enter the main menu. Configure the NVR	
4> Video Playback: Left click to enter the menu, play the video inside the hard disk.	
5> Backup: Left click to enter the backup menu. Connect the replacement storage device such as USB flash disk or removable hard disk to NVR to export the internal data of the hard disk to the external removable storage device.	
6> Maintenance information: Left-click to enter the menu to view information such as device running log and current bandwidth.	
> PTZ Control: Left click, PTZ control will be performed on the image channel. The channel videos will be displayed in full screen and will pop up control menu. If the camera does not support PTZ protocol, the corresponding button on the pop-up menu does will not work.	
8> Image Settings: Left-click to adjust the NVR's HDMI and VGA outputs.	
9> Record Control: Left click to bring up the shortcut menu. Quickly select which channels need to turn on or off recording. You can use his button if you need a key to open or close all channels.	
10> Exit: Performs restart, logout, and shut down operations. See Section 2.1.2 Shutdown	

Return to the main page and save the settings

Right-click in the settings interface to quickly return to the main interface.

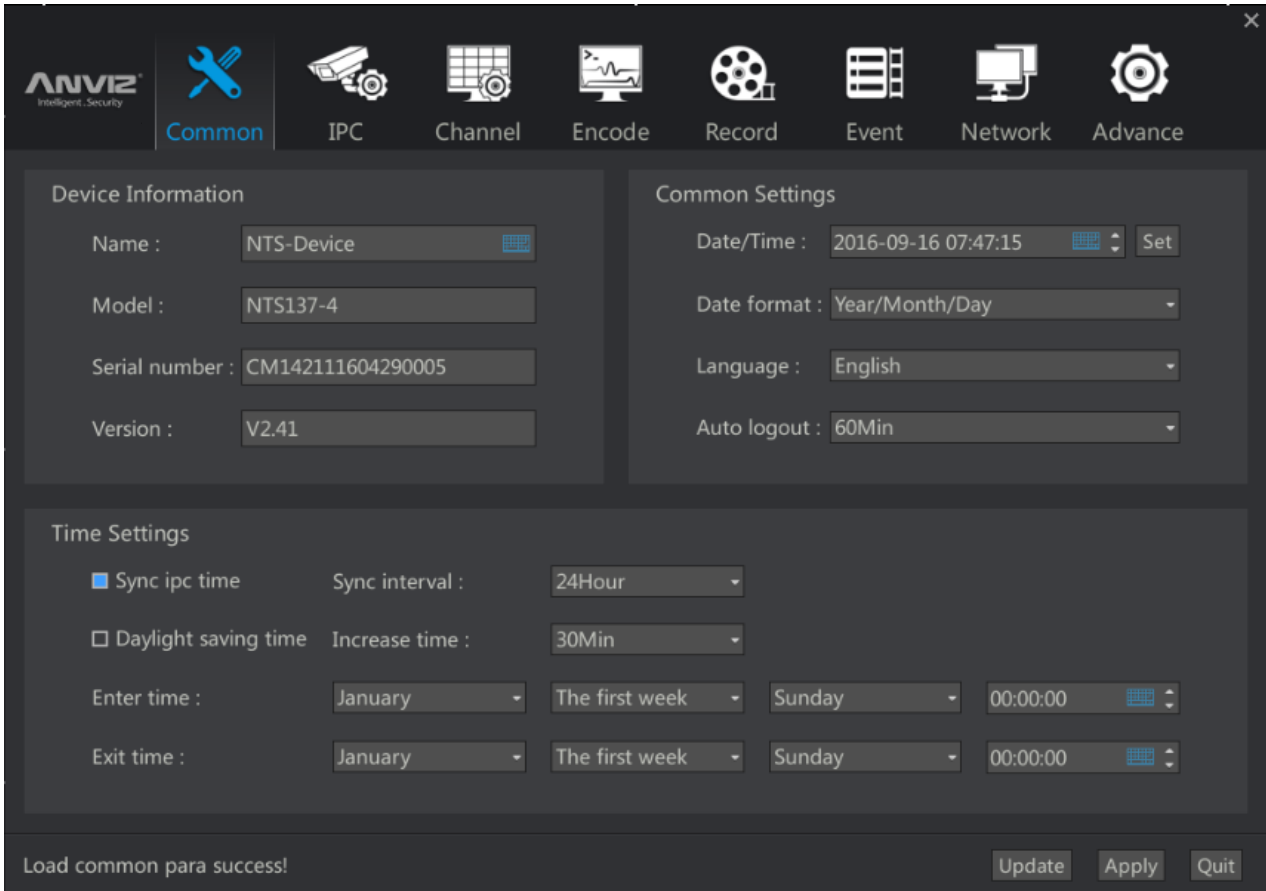
If you modify the NVR parameters in the setup interface, you will be prompted for the options to be modified..


The user can confirm the last time whether or not to save the changes. You can also remove the option that has been selected, so that the previous settings will not be saved.



2.4 Common settings

Main Interface [Right] → [Main Menu] → [Common Settings] pop-up Common Settings interface.



<p>Device name: The user can modify the device name through the right soft keyboard. it Supports Chinese and English input.</p>	
<p>Model: Displays the device model.</p>	
<p>Serial Number: Shows the device serial number .</p>	
<p>Version number: Displays the version number of the device. After the upgrading of the device ,This item will display the current device version information.</p>	
<p>Time setting: You can modify the current system time through the right soft keyboard. Then click the [Settings] button on the right to set the NVR time.</p> <p> Note: Clicking [Apply] does not reset NVR time without clicking [Setting].</p>	
<p>Date format : Choose the date format, depending on your personal habits.</p>	
<p>Language: Chinese and English.</p>	
<p>Automatic logout: after the administrator operation, forgot to log off, in order to avoid someone to NVR error</p>	

operation, provide automatic logout function. After logging off, once again the operation of NVR requires administrator account login.

Synchronous IPC Time: Configure the time interval for IPC to synchronize IPC. To ensure that all devices within the system time consistency.

Daylight saving time: tick the option, check the relevant daylight saving time configuration.

Time Settings

Sync ipc time Sync interval : 24Hour

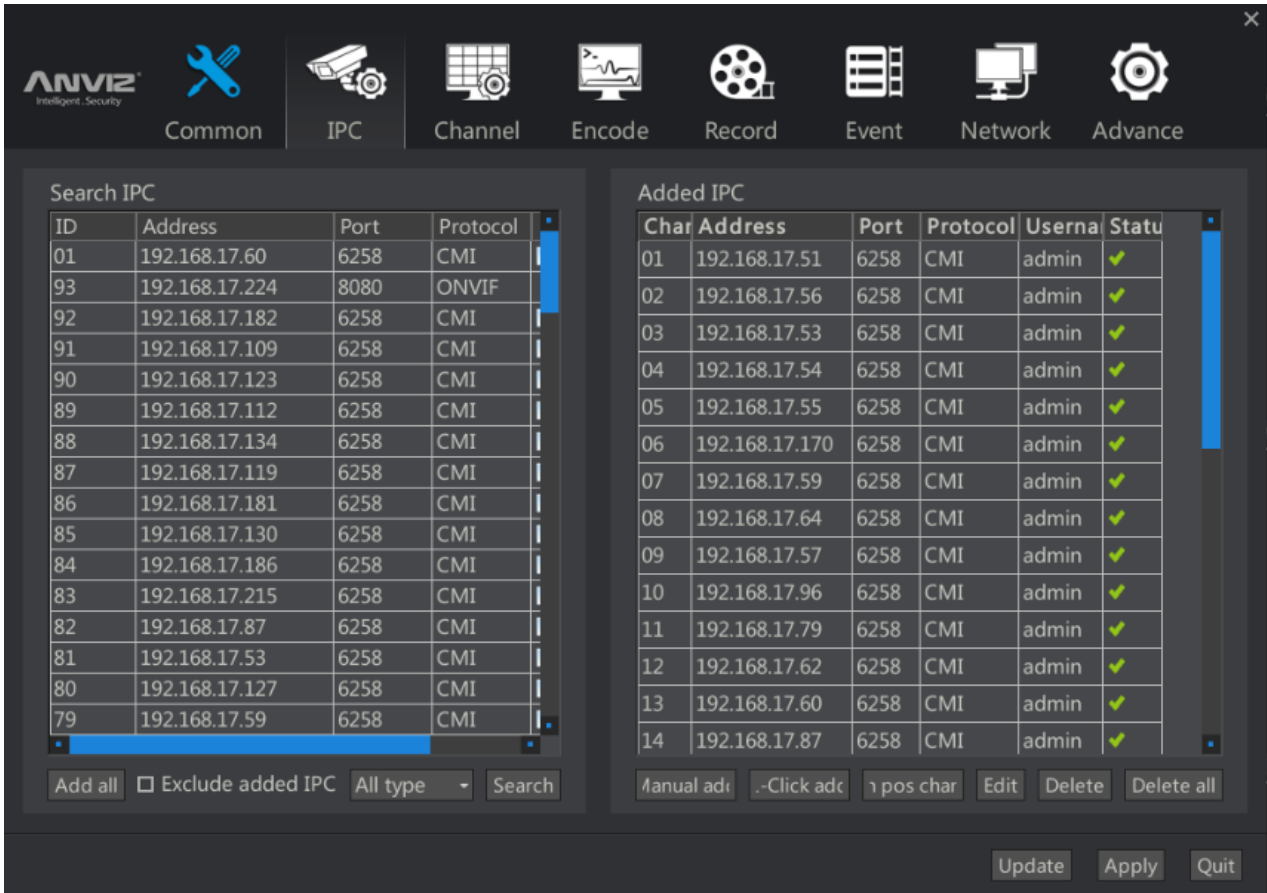
Daylight saving time Increase time : 30Min

Enter time : January The first week Sunday 00:00:00

Exit time : January The first week Sunday 00:00:00

2.5 IPC Management

Main interface [right] [main menu] [IPC management] pop-up IPC management interface.

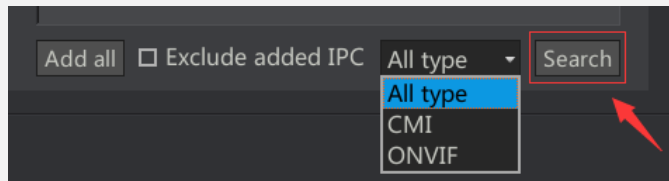



2.5.1 Manually add IPC by CMI protocol

1> search IPC: left click the [search] button, search the available cameras in the current NVR network. The default choice for { all types }, NVR will first search available cameras in the network through the CMI protocol network, and then the ONVIF protocol can be used to search the cameras.









Description: the CMI protocol can search different networks that support CMI protocol. Using ONVIF only can search the same network segment as the NVR. If you use ONVIF to add IPC, IPC and NVR must be in the same network segment.



2> Using CMI to add IPC: in the search list double left click add the IP address, the IPC will be added to the right <IPCs has been added > list. Display 则  Represents a successful connection. Images can be viewed at the main interface



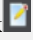
Description: why add, but display .

Added IPC					
Char	Address	Port	Protocol	Username	Status
01	192.168.17.51	6258	CMI	admin	
02	192.168.17.56	6258	CMI	admin	
03	192.168.17.53	6258	CMI	admin	
04	192.168.17.54	6258	CMI	admin	
05	192.168.17.55	6258	CMI	admin	


Although the CMI protocol can search different network segments Cameras, but if you want to successfully connect, you must ensure that the IPC and NVR in the same segment. Need to configure the IP of IPC. See 2.5.2 through the CMI protocol to modify the IPC network address.

2.5.2 Through the CMI protocol to modify the IPC network address and a shortcut to add IPC

1> through the NVR to modify the IPC network address: NVR provides a convenient way to modify the IPC network address. Because the NVR search available CMI cameras within the NVR camera through the MAC address, so even if the network IPC with the same network address, you can show them all, and also one by one to manually modify or automatically assign.

2>Left-Click<Search the list of IP addresses that need to be modified , Click  <Change IP address. You can configure the IP address for DHCP or manually.

3>one click to add: if the current NVR connection of all the IPC are the default network address, or need NVR for all the IPC network address re-distribution. You can use one click to add to avoid the tedious manual to modify the network address and manually add the action. First click on the [search] button, all the IPC will be found out, and then one click to add a button. NVR will search for all CMI camera one by one from the current segment of the IP network.

58	192.168.17.123	6258	CMI	
09	192.168.17.124	6258	CMI	

ANVIZ Change IP address ✕

DHCP :

IP address :

Subnet mask :

Default gateway :

DNS1 address :

DNS2 address :

Multicast address :

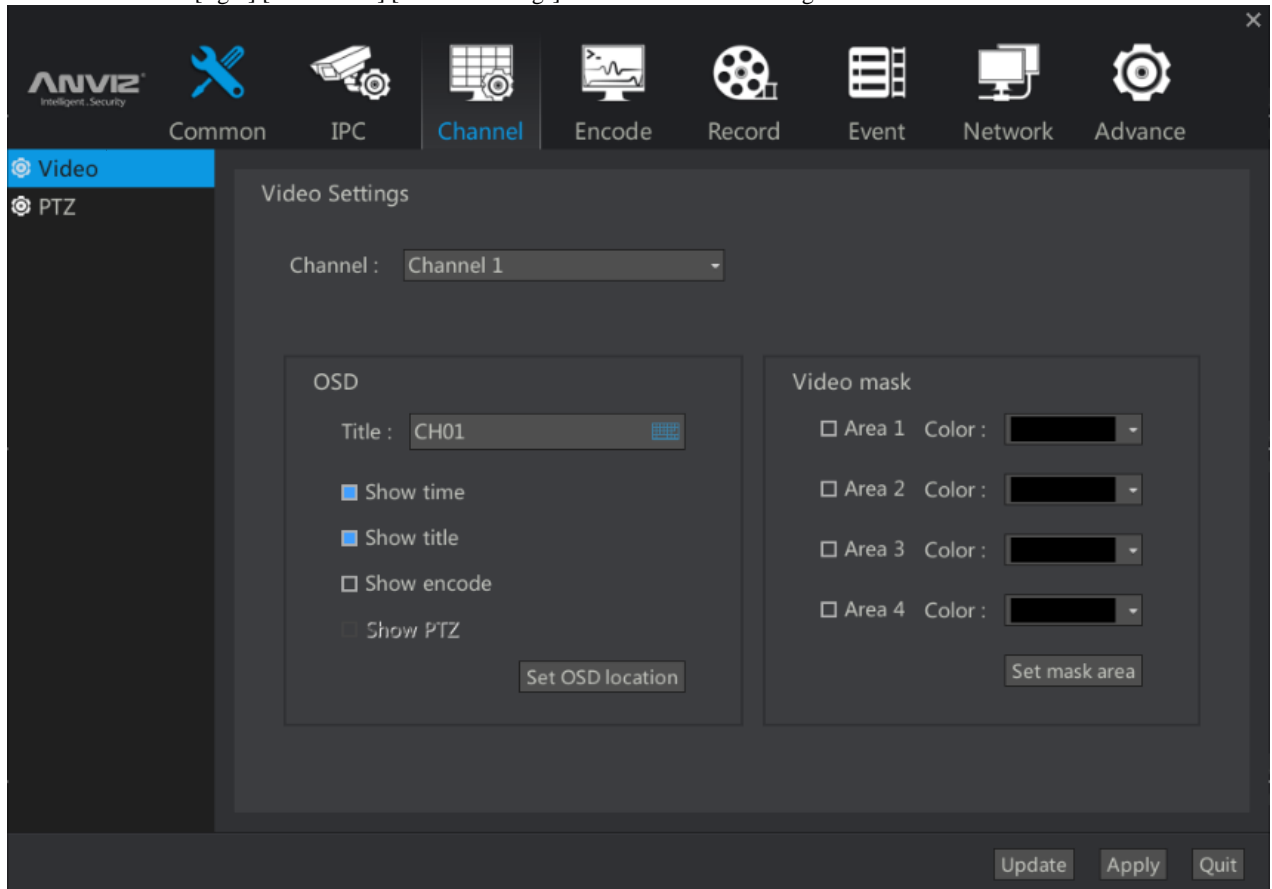
TCP port :

HTTP port :

12	192.168.17.62	6258	CMI	admin	✓
13	192.168.17.60	6258	CMI	admin	✓
14	192.168.17.87	6258	CMI	admin	✓

2.6 Channel setup

The main interface [right] [main menu] [channel settings] into the < channel Settings > interface.

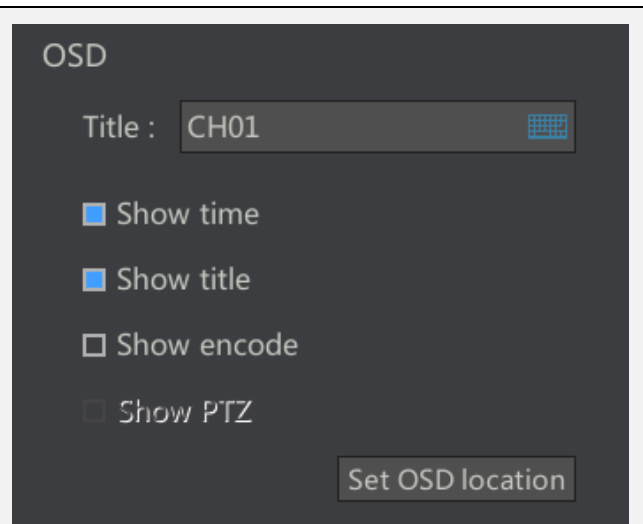


2.6.1 OSD settings of the NVR Channel

- 1> In { Channel } list ,select the channel that need to modify its OSD information.
- 2> Edit the title: on the right side of the soft keyboard pop-up NVR corresponding channel of IPC channel Title to do the configuration. It Supports English and Chinese.
- 3> time, channel title, encoding information display can be checked or canceled by check box.
- 4> Select no effect of hold back of PTZ information display .
- 5> Will pop up three options, the full screen channel, time, channel title and coding information OSD information overlay position can be dragged by the left mouse button in the screen.



Description: NVR only supports the CMI protocol to configure OSD information of an IPC. It does not support OSD information of ONVIF protocol .



2.6.2 Occlusion settings of NVR channel video

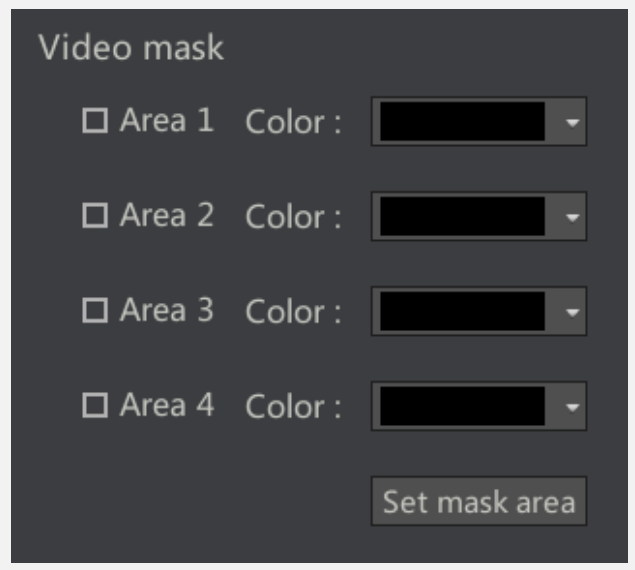
1> In the {Channel} drop-down list, select the channel that needs to be masked. A total of 4 overlapping regions are supported.

2> In the < video screen > menu, select the area, and select the appropriate color in the { color } drop-down list.

3> Left click the settings screen button, NVR will select the channel full screen display, the user through the drag to achieve specific areas of the Screen occlusion.



Description: NVR only supports the CMI protocol for IPC video occlusion configuration. If the area was not checked, set the screen area button does not play a role.

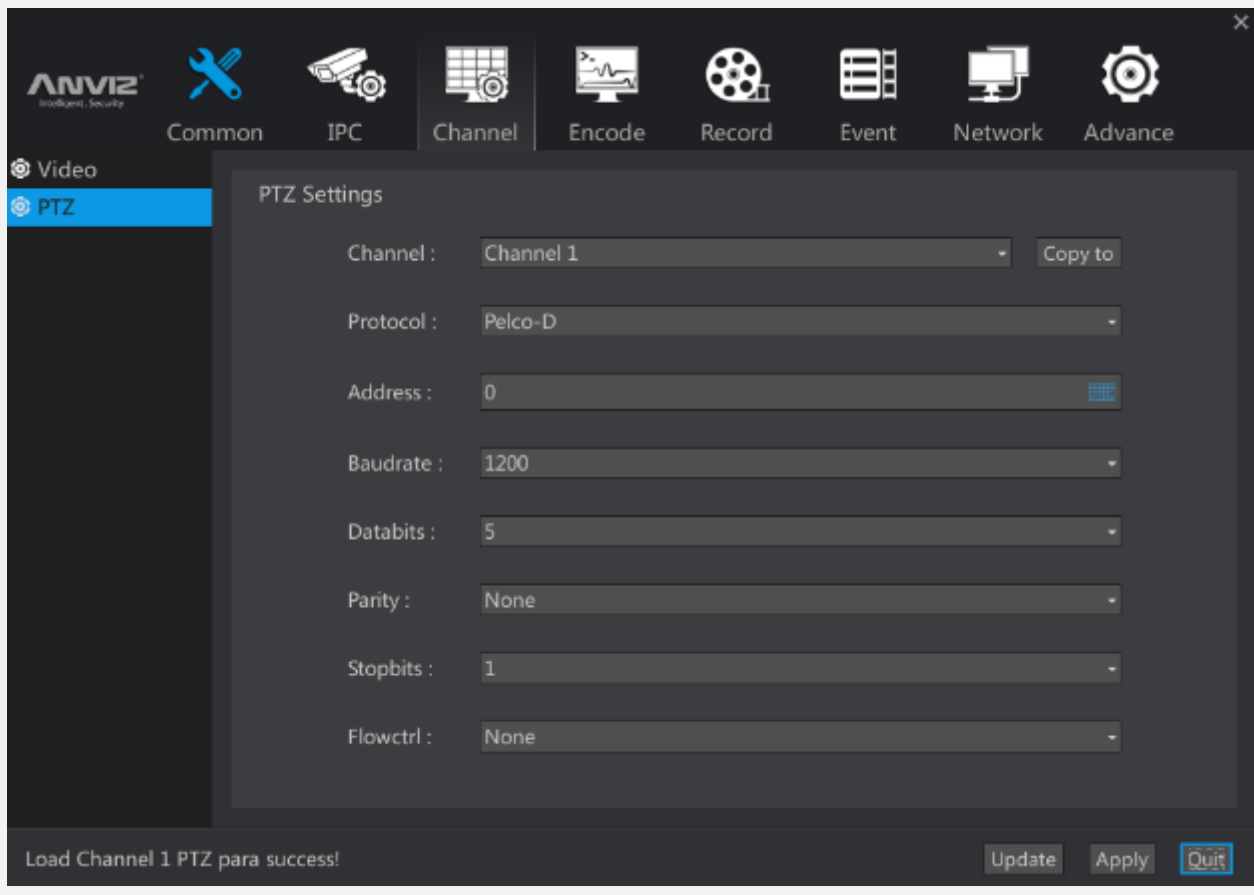


2.6.3 set the PTZ parameters of NVR

1> left menu select [PTZ parameters]

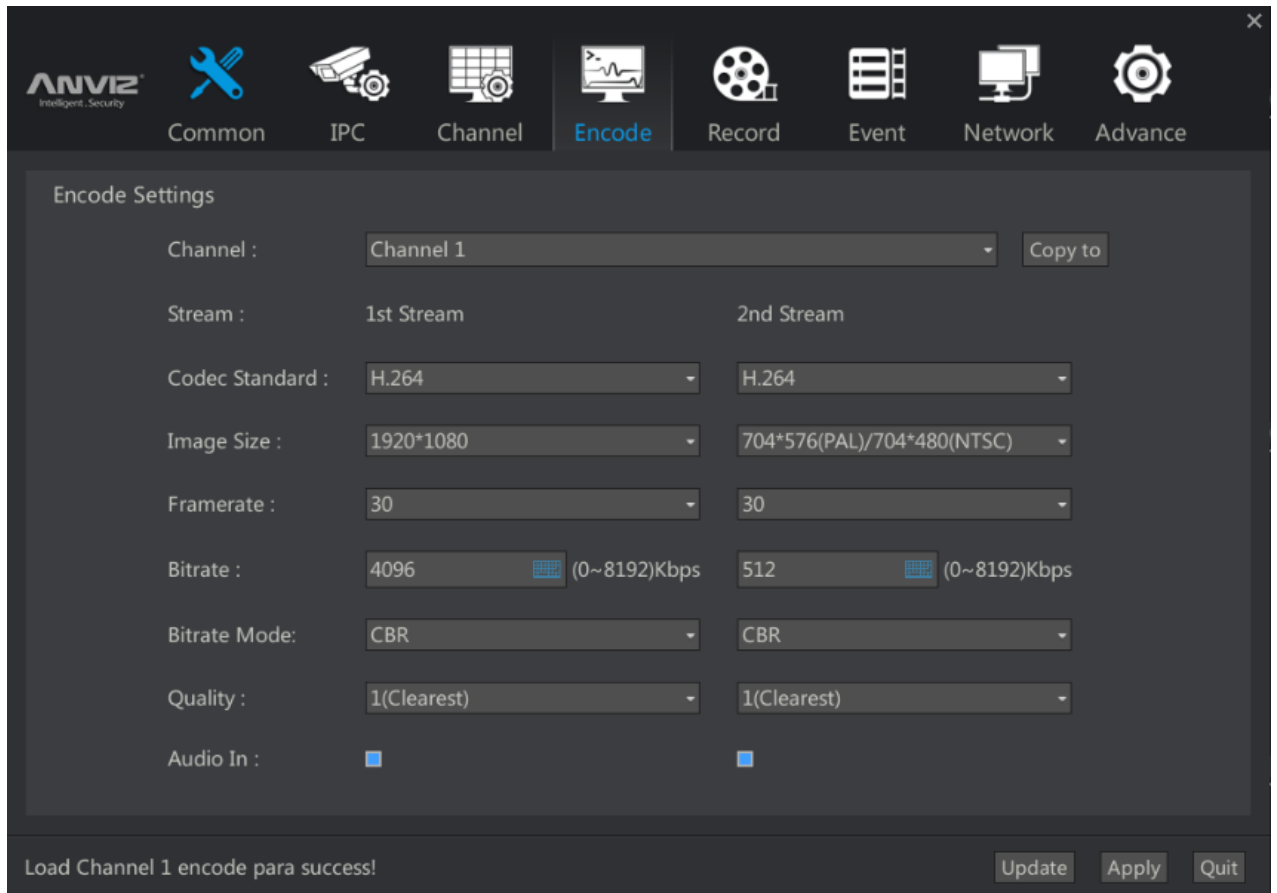
2> select the PTZ channel you need to configure. For example, channel 1 connect Speed Dome Cameras, protocol PELCO-D, the baud rate is 1200. According to the requirements of the Speed Dome Cameras, configure the PTZ parameters. we will not give necessary details on the meaning of each PTZ parameter.

3> according to the NVR actual connection of the camera type, whether or not need to use [copy to] button. If the NVR is connected to the 16 Speed Dome Cameras, then just configure one channel then copy the configuration of the channel to the other 15 channels.



2.7 Encoding settings

The main interface [right click] [main menu] [encoding settings] enter < encoding Settings > interface.



1> channel: select a certain channel of NVR , set a coding information of the front camera of the connection channel .

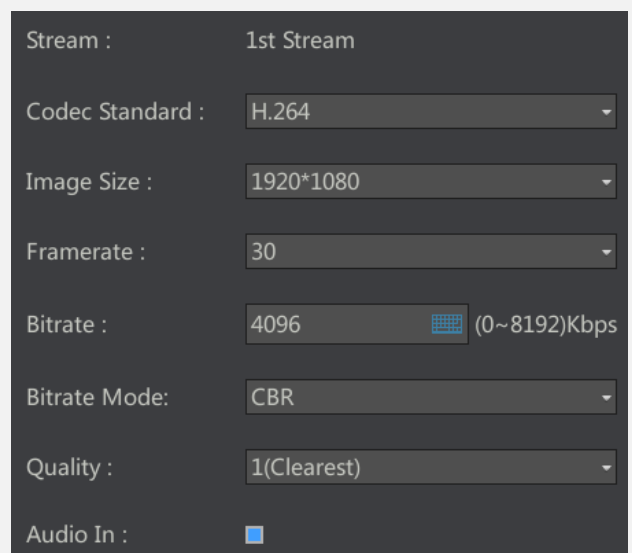
2> main stream / sub stream: set the main stream of the camera and the secondary stream.

3> image size: read the current size of the front camera, as well as other supported image size. Such as 1920x1080 on behalf of 2 million cameras, 1920X720 on behalf of 1 million cameras. Users can choose from the drop-down list, then configure camera to support the resolution of other cameras

4> frame rate: read the current frame rate of front camera . , configure the camera into the other frame rate.

5> coding mode: divided into CBR and CBR/VBR modes, the image quality can not be adjusted. In VBR mode, the image quality can be adjusted according to the quality level.

6> audio decoding: tick off the video stream of the camera to decode the audio.





Note: CBR: fixed rate, in accordance with the set bit rate, ignore the complexity of the image, all in accordance with the set bit rate coding.

VBR: is a set of dynamic rate, the encoding of the video based on the rate ceiling and the level of image quality , if the image is still simple texture, then it will make out a small stream, if the image is made up of complex motion texture, then it will make out larger stream.



Description: in general, the rate of 2 million camera is set to 4M-6M, the rate of 1 million -2 million camera is set to 2M-3M, which can guarantee the quality of the coding image.

2nd Stream

H.264

704*576(PAL)/704*480(NTSC)

30

512  (0~8192)Kbps

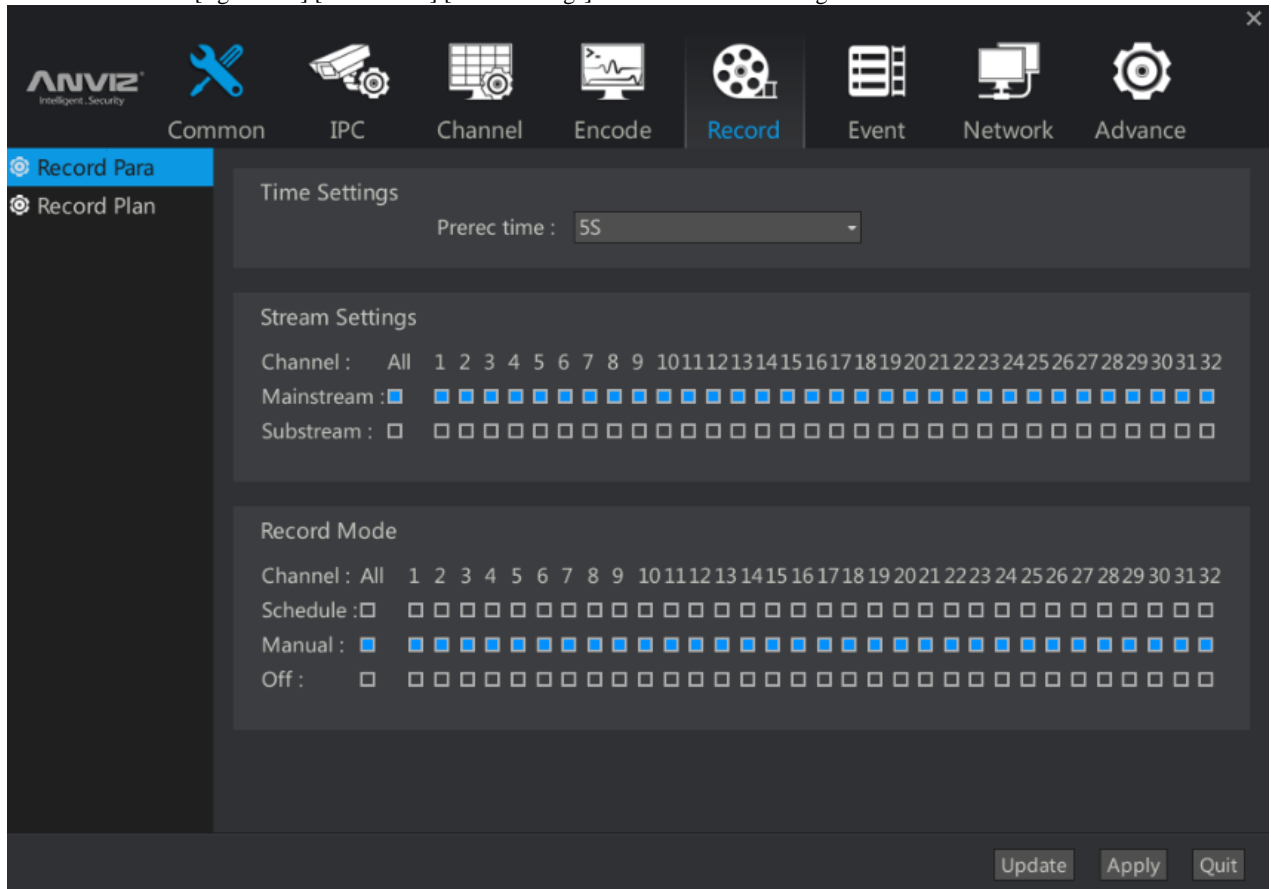
CBR

1(Clearest)

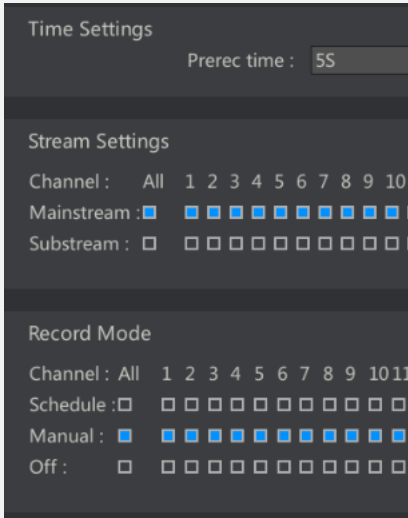


2.8 Video settings

The main interface [right click] [main menu] [video settings] into the < Video Settings > interface.



2.8.1 NVR Video parameter setting

<p>1> pre recording time setting: pre recording time can be set to 5-10S.</p> <p>2> stream settings: select the video stream : the main stream / sub stream.</p> <p>3> video mode: select video mode is planned / manual / stop. Can also be in the main interface, right-click menu for shortcut quick setting.</p>	
---	--

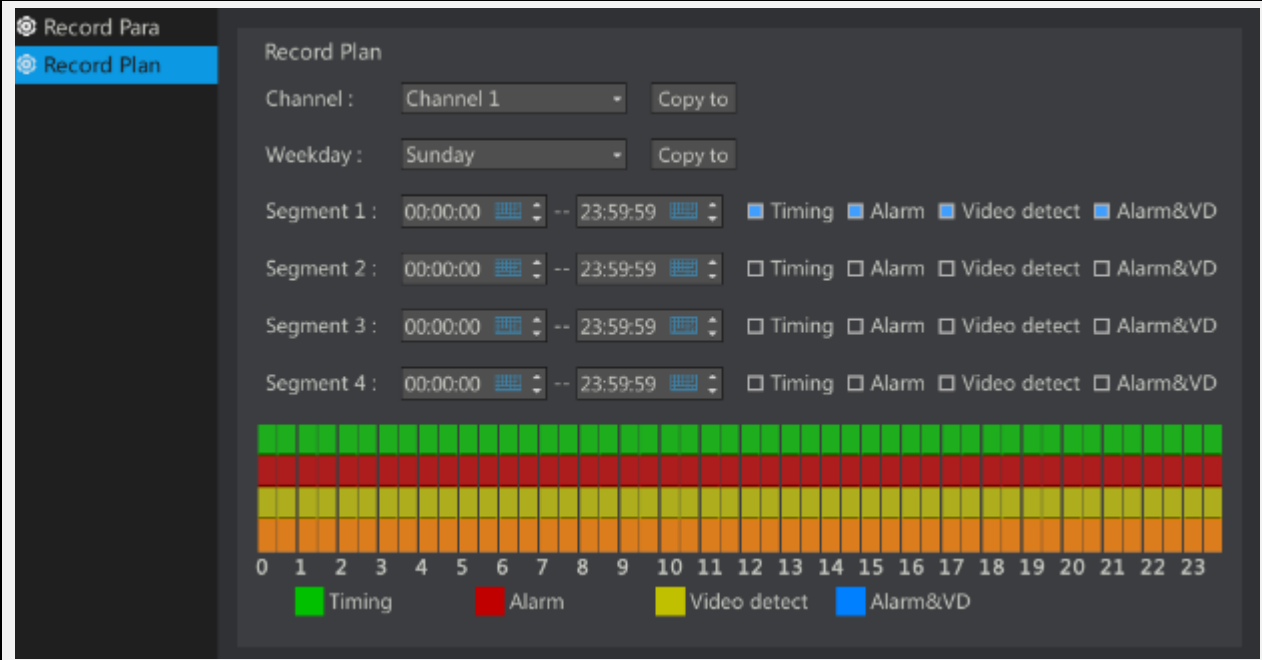
2.8.2 NVR Video program settings

1> channel selection: select the channel you need to configure the video program. Configuration of other channels can be completed through the [copy to] button.

2> working days: one week after the completion of the configuration ,you can use 【Copy to】 button, to configure the other a few days a week.

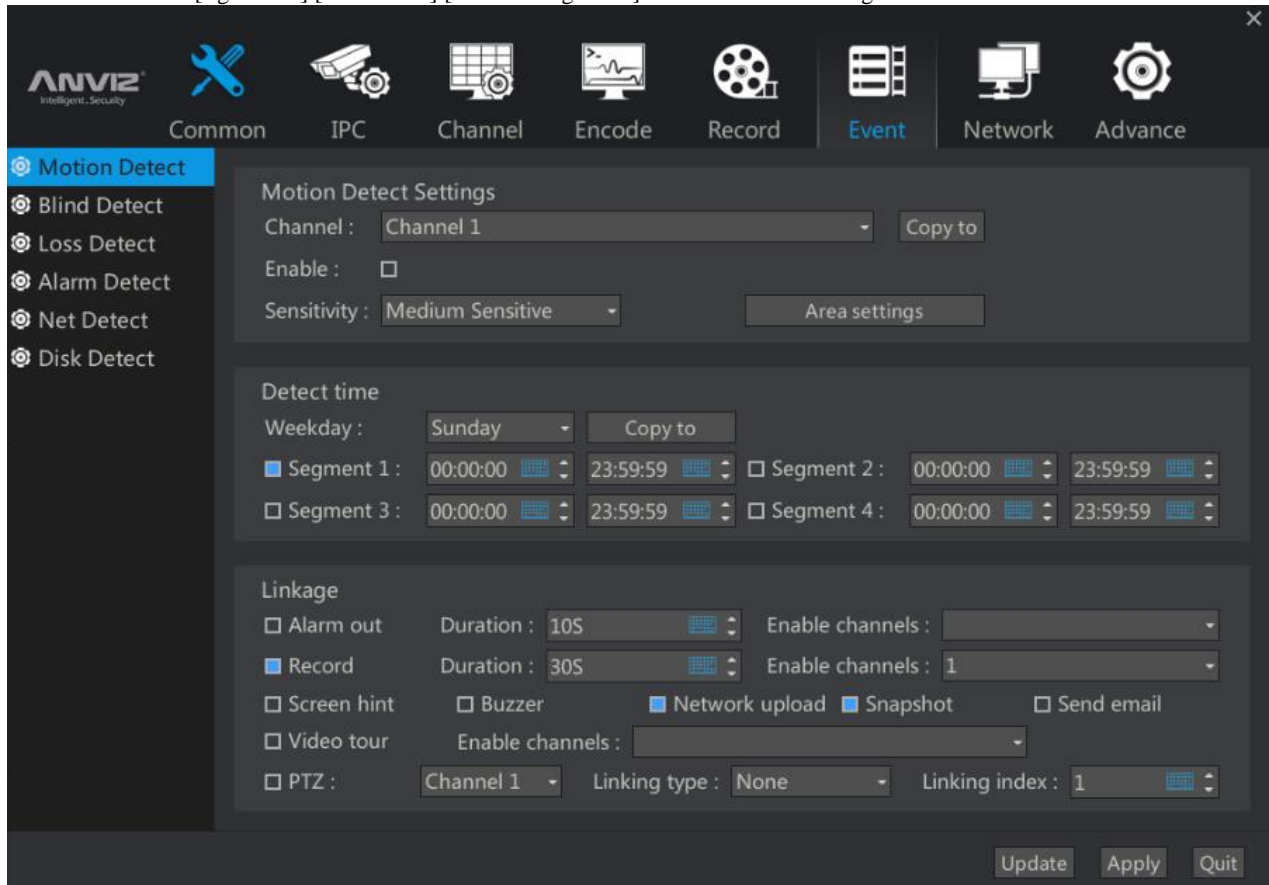
3> time segment selection: a day is divided into 4 time periods, each time period is divided into timing, alarm, mobile detection triggered video. If the timing is checked, the video is executed within the specified time. If the check is checked, the channel camera detects the start of the motion. The pre record time of movement detection is set in the last menu.

4> on Color: different video types using different color representation.



2.9 event management

The main interface [right click] [main menu] [event management] into the < Event Management > interface.



2.9.1 Alarm linkage instructions

Alarm Description: the chapter mainly describe the NVR linkage strategy when event alarm input occurs, a variety of alarm events leads to similar linkage strategy, So in the following section we will afford giving unnecessary details on dynamic strategy significance.

- 1> Alarm output: event alarm input will trigger the NVR local alarm output, triggering the external alarm device. Alarm output maximum duration of 60 seconds after the disappearance of the dynamic test. The Specific enable channel is determined by the specific NVR model.
- 2> Linkage Video: event alarm input will trigger the NVR video, the maximum duration of 300 seconds after the disappearance of the dynamic test alarm. Specific enable channel is according to the specific NVR models to choose. 4 paths NVR only 4 channels can be configured as a dynamic test video. 16Roads NVR can have 16 channels for configuration.
- 3> The main interface displays: the main interface of the alarm pop-up dialog box prompts the alarm. The alarm needs to be canceled by the user manually.
- 4> Buzzer: Event alarm input will trigger buzzer.
- 5> Network upload: alarm upload, capture pictures and Video patrol temporarily unable to open.
- 6> photo capture:
- 7> Send E-mail: The event alarm input will trigger an e-mail to send an alarm message.
- 8> Video Patrol :
 - PTZ: alarm input event occurs, the linkage specific channel (provided that this channel must be connected to the dome or Cloud Terrace) of a preset or cruise. Preset position or cruising range 1-255.

Linkage

Alarm out Duration : 10S Enable channels : [dropdown]

Record Duration : 30S Enable channels : 1

Screen hint Buzzer Network upload Snapshot Send email

Video tour Enable channels : [dropdown]

PTZ : Channel 1 Linking type : None Linking index : 1

2.9.2 Description of the effective time of various alarm linkage strategy

Strategy Effective Time Description: This chapter describes the various events when the alarm input occurs, NVR various linkages strategies in this effect are same, so this section to have small introduction, will not repeat them in the follow-up sections .

Divide all the time into seven days a week. Each day is divided into four time periods. Here's an example:

1>want 24 hours a day to enable an alarm linkage strategy: first check the time period 1, will be effective from 0:00 to 24:00.

And then click the [copy to] button to apply the effective time of the day to the whole week.

2>hoping that every Sunday AM 9-10 and PM1-5 to take effect this policy: first select Sunday, then check the time period 1, the effective time is selected as 09: 00-11: 00: 00. Finally, check the time period 2, the effective time is selected as 13: 00: 00-17: 00: 00.

Detect time

Weekday : Sunday Copy to

Segment 1 : 00:00:00 23:59:59 Segment 2 : 00:00:00 23:59:59

Segment 3 : 00:00:00 23:59:59 Segment 4 : 00:00:00 23:59:59

2.9.3 Motion Detection Linkage

Motion detection linkage: The NVR configure the camera, in the image of a delineated area, when there is a change in the camera image detection area (support internal algorithms to determine whether the object is moving), will output alarm signal. Can be used to linkage video, alarm, capture and other actions.

1> Channel: Select the channel to configure motion detection. The number of channels corresponds to the maximum number of access routes of the NVR.

2> Enable: Tick Enable check box.

3> Sensitivity: based on actual test results to adjust , default medium.

4> Regional Settings: Click the regional settings will pop up a full screen of the current selected channel, provide a drag box for motion detection area.

Motion Detect

Motion Detect

Blind Detect

Loss Detect

Alarm Detect

Net Detect

Disk Detect

Motion Detect Settings

Channel : Channel 1 Copy to

Enable :

Sensitivity : Medium Sensitive Area settings

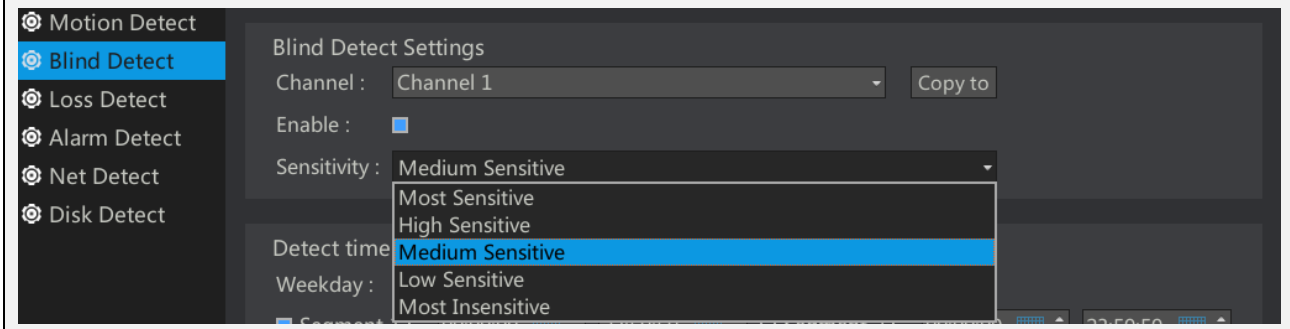
2.9.4 Occlusion detection linkage

Occlusion detection linkage: Enable this feature, the camera changes according to the image, when the camera is blocked, will output Occlusion alarm signal. Can be used as linkage video, alarm, capture and other actions.

1>Channel: Select the desired configuration occlusion detection channel. The number of channels corresponds to the maximum number of access routes of the NVR.

2>Enable: Select the check box to enable.

3>Sensitivity: According to the actual test results to adjust, the default medium.

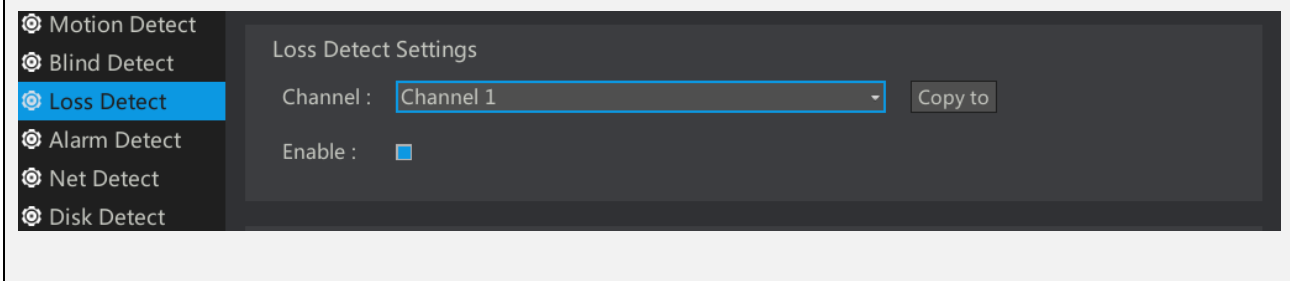


2.9.5 Video loss linkage

Video Loss Linkage: When this feature is enabled, the NVR will accept a video loss alarm from the front-end camera. In the case where the front-end camera remains connected to the network, If the camera is abnormal. It will cause camera stop recording then an alarm will be generated.

1>Channel: The video loss detection channel needs to be enabled. The number of channels corresponds to the maximum number of access routes of the NVR.

2>Enable: Select the check box to enable.



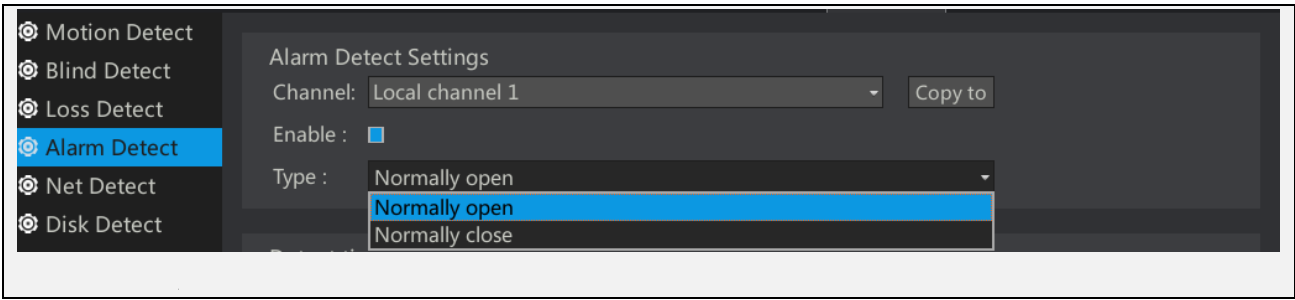
2.9.6 Alarm input linkage

Alarm input Linkage: open this function, NVR will detect local alarm inputs and remote cameras alarm input. If the alarm input is detected, the relevant action will be interlocked.

1>Channel: divided into local channel and remote channel. The local channel is an alarm input supported by the NVR hardware, different numbers of alarm inputs or no alarm input depending on the NVR model,. Remote channel refers to the alarm input supported by remote IPC hardware, remote IPC alarm input will be triggered by the network to notify the NVR to achieve linkage. According to the NVR model has a different number of remote channels. For example, 16-channel NVR has 16 remote alarm inputs.

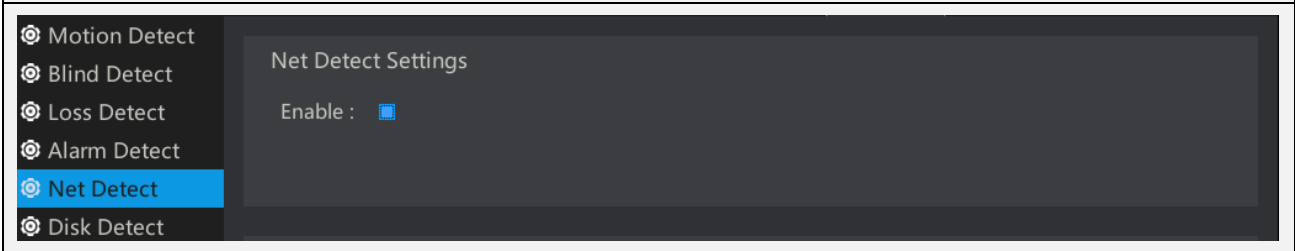
2>Enable: Select the check box to enable.

3>Type: Normally open refers to the hardware on the alarm input is received open or high voltage, does not generate an alarm, otherwise will generate an alarm. Normally closed refers to the hardware on the alarm input to receive a closed-circuit or high? An alarm will be generated, otherwise, an alarm will not be generated.



2.9.7 Network Abnormal Linkage

Network Abnormal Linkage: Provides an alarm when the network is abnormal. Such as NVR network port loose lead to network disconnection.



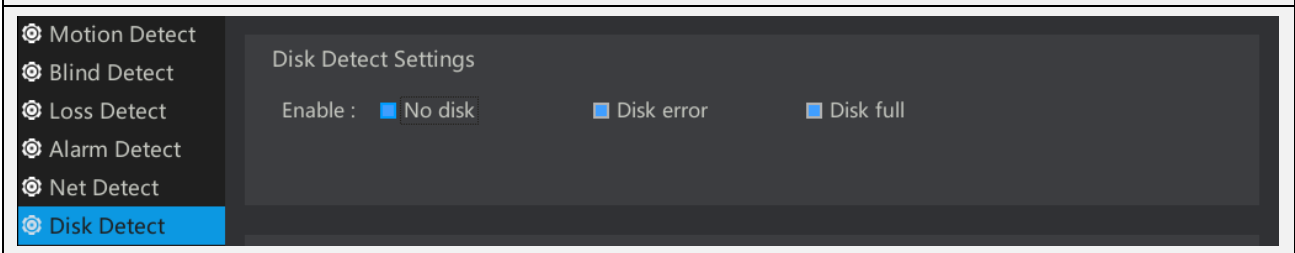
2.9.8 Hard disk abnormal linkage

Hard disk abnormal linkage:

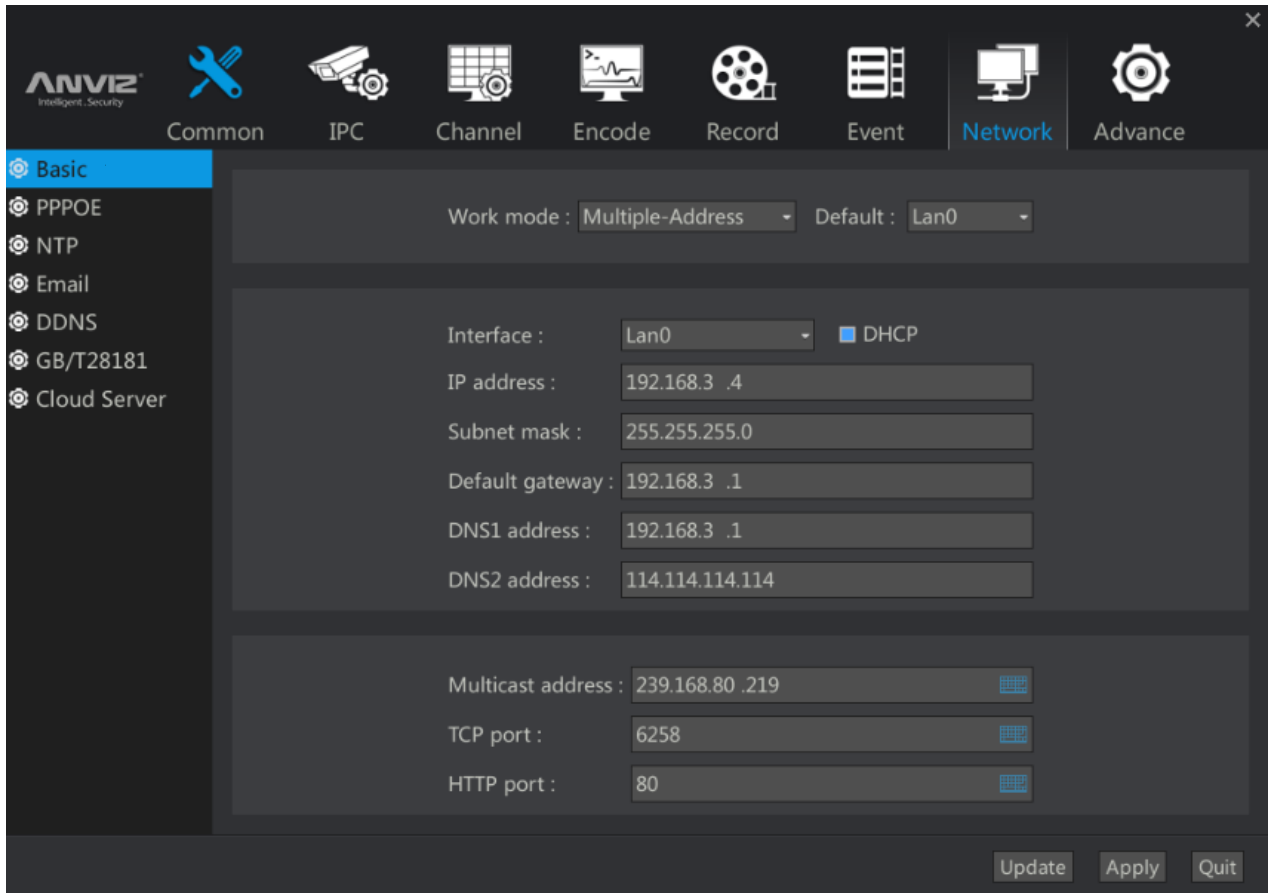
1>Disk less alarm: after power on If you do not detect the hard disk or is working to detect hard disk ,the loss of the hard disk will produce this alarm

2>Hard Disk Error: This alarm is generated when the hard disk is present but unable to read and write it properly

3>Hard disk full: When the recording mode is not set to cycle coverage , The video will lead to the depletion of disk capacity to stop recording, and generate this alarm.



2.10 Network settings



2.10.1 Basic network settings

1> work mode: Some NVR models have 2 network ports , so in the work mode select Multi-site mode, the default network port LAN0.

Multi-site: two network card parameters independent of each other, work with each other, select the ‘network port’ LAN0 and LAN1 respectively for settings. You can select one as the default.

2> Configure basic network information: Select the corresponding network interface. Some models have two network ports NVR, you need to set them separately. Select it In the {Network Port Selection} list .

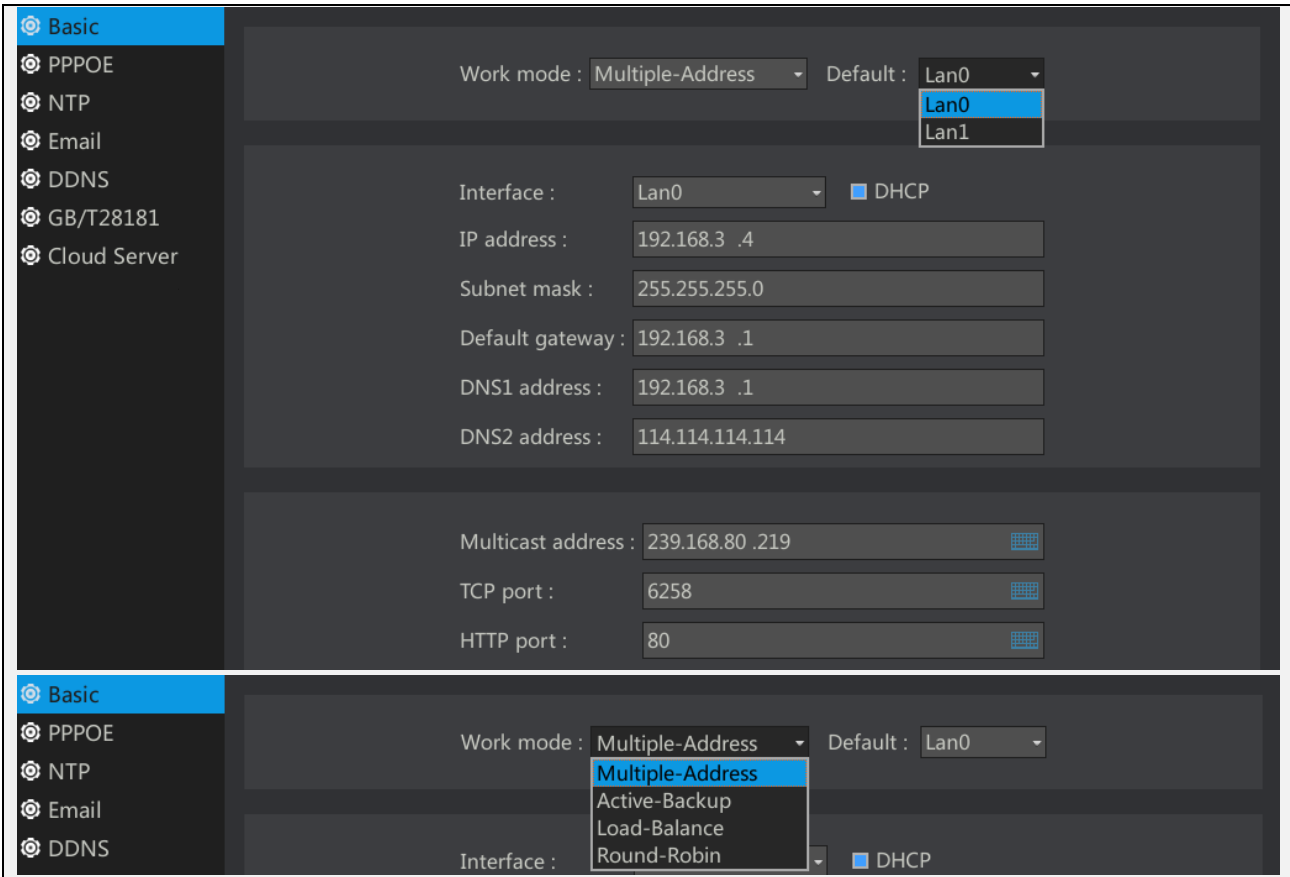


Description: IP address, the default gateway needs the same network segment.

Standby:

Load balancing:

Rotation:

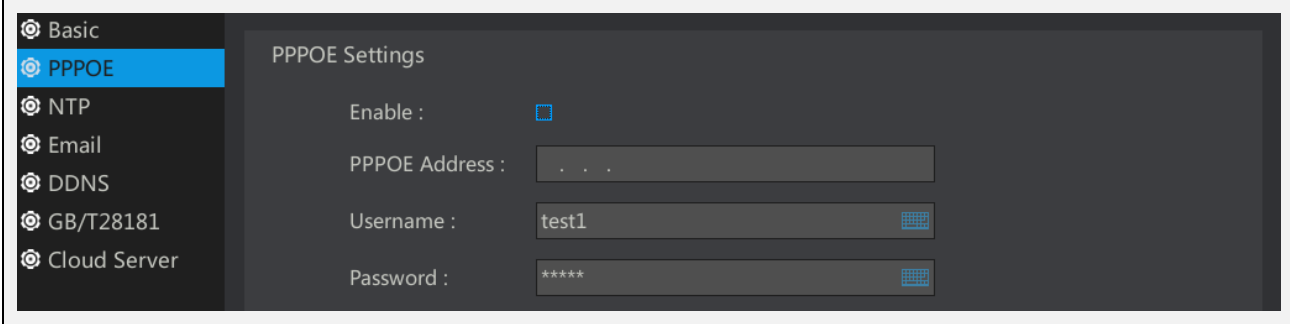


2.10.2 PPPOE Settings

1> Enable: If you need to open a PPPoE connection, Please enable the check box.



Note: The user name and password are available from the operator.



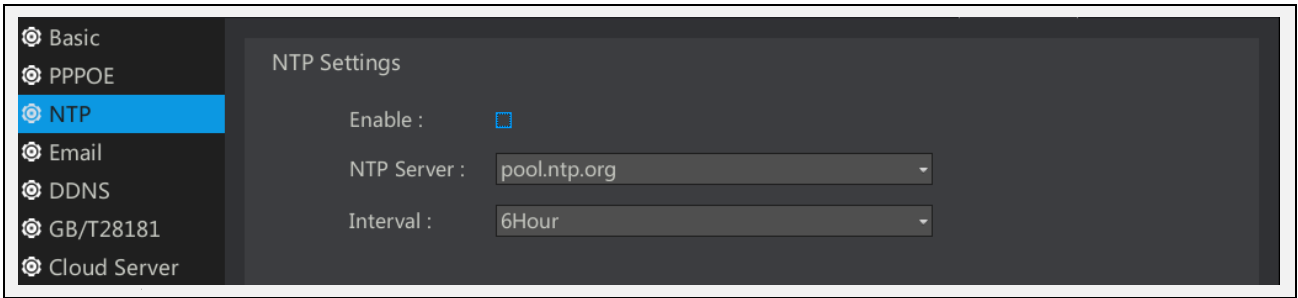
2.10.3 NTP Settings

Enable NTP, to ensure the accuracy of the system time through periodic timing of NTP server .

- 1> Enable: Check the box to enable this feature.
- 2> NTP server address: use the default server. You can also select other listed servers.
- 3> Interval: Set how long the NVR will synchronize with the server.



Note: You must ensure that the NVR can be connected to the Internet to use the NTP function. If you can not connect to the Internet, set the network parameters in [Network Settings] - [Basic Settings] correctly, or contact the administrator to set up an NTP server within the LAN.



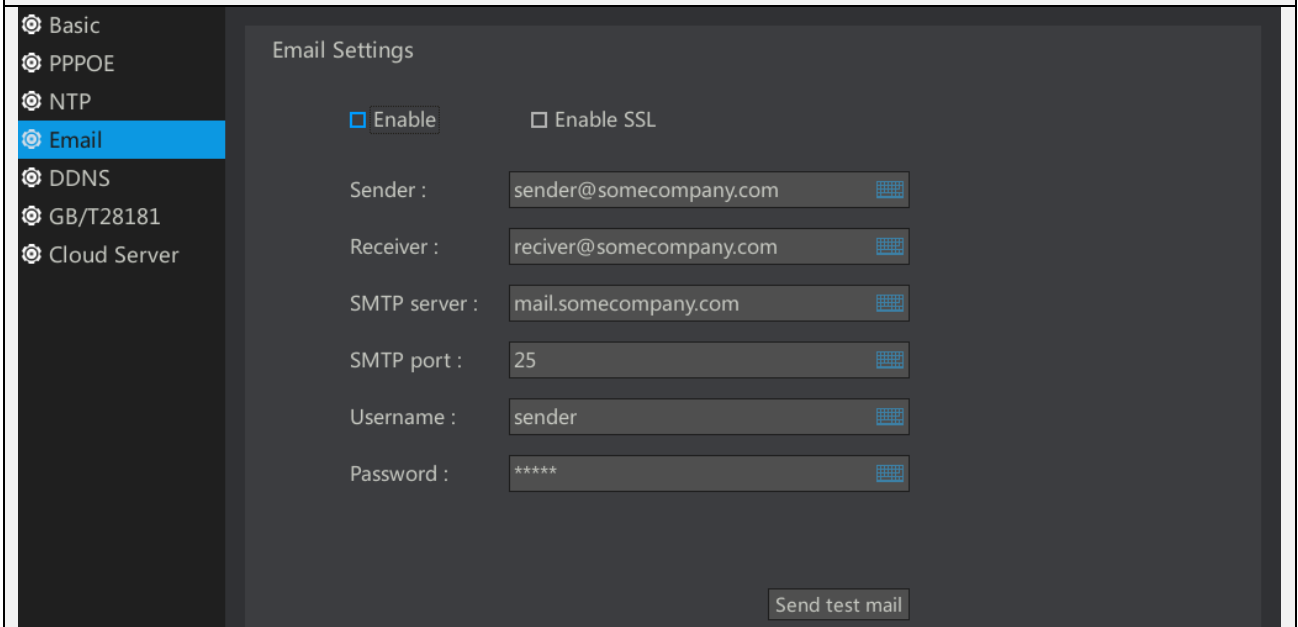
2.10.4 Email Settings

Enable Email, when an alarm is generated, it can send a message to the specified mailbox .

- 1> Enable: Check the box to enable this feature.
- 2> Enable SSL: If SSL is enabled, fill the SMTP port with 465. If SSL is not enabled, fill the SMTP port with 25.
- 3> User Name / Password: Enter the user name and password of the sender's mailbox.
- 4> SMTP Server Address: Enter the sender's SMTP server address.



Note: To achieve this function ,you must ensure that the dynamic measurement or occlusion have linkage EMAIL. And NVR can be connected to the Internet.



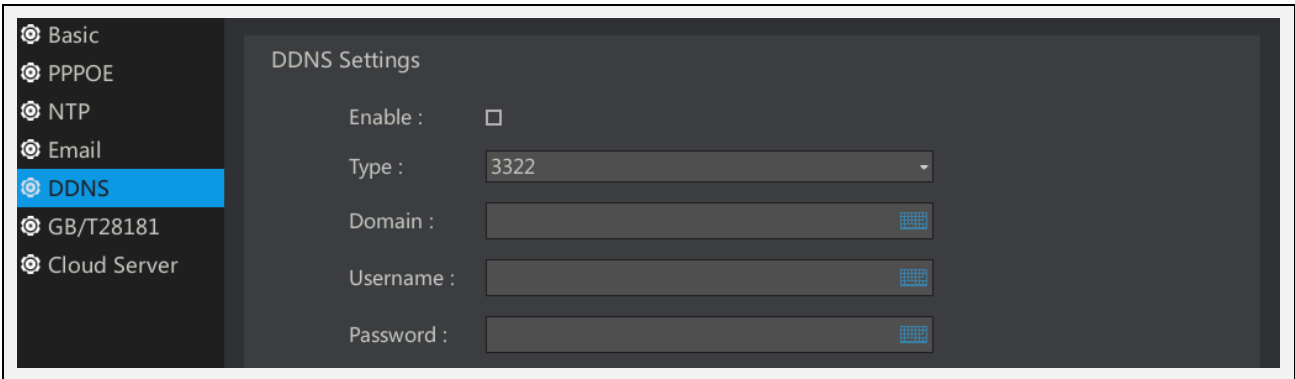
2.10.5 DDNS Settings

DDNS Parameters: In the public network environment, use DDNS (Dynamic DNS) to access NVR via domain name, can effectively solve the current problem of dynamic IP to access the NVR.

- 1> Enable: Check the box to enable this feature.
- 2> Type: Provides 3322 or dyndns for selection.
- 3> Domain Name: Please enter the dynamic domain name registered on <http://www.pubyun.com/> or dyndns website.
- 4> User Name / Password: Enter the user name and password set when registering.



Note: You must ensure that the NVR is connected to the Internet.



2.10.6 GB/T28181 Settings

GB / T28181-2011 "security video surveillance network system information transmission, switching, control technology requirements" was proposed by the Ministry of Science and Technology Information Bureau, by the National Security Alarm System Standardization Technical Committee (SAC / TC100) centralized, Ministry of Public Security Such a number of units with the drafting of a national standard.

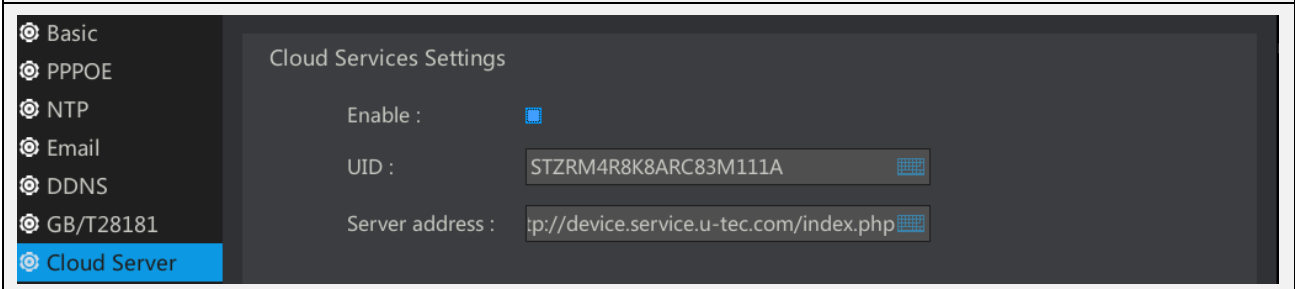
- 1> Register / Log off: Select whether you want to register the device or log out of the device.
 - 2> Server IP / Port: Enter the server IP and port to be registered / logged out.
 - 3> Password: register / log off the server password you need to use.
- Registered ID/ local ID: to apply in the standard management department.



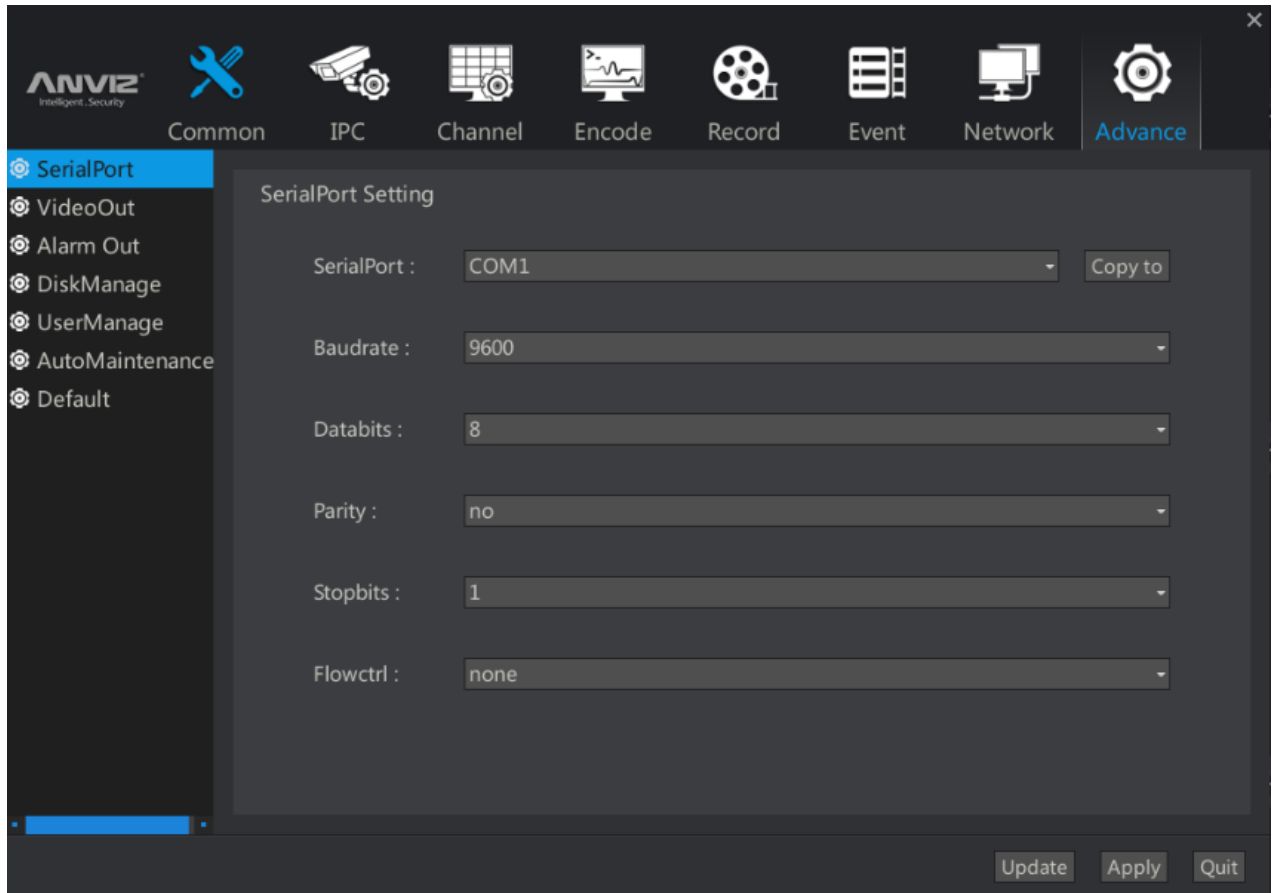
2.10.7 Cloud Services Settings

Cloud services are the local settings needed to cooperate with mobile APP to access NVR.

- 1> Enable: Check the box to enable this feature.
 - 2> UID: The unique service identifier of the machine on the cloud server.
- Server Address: The name of the server providing the cloud service.

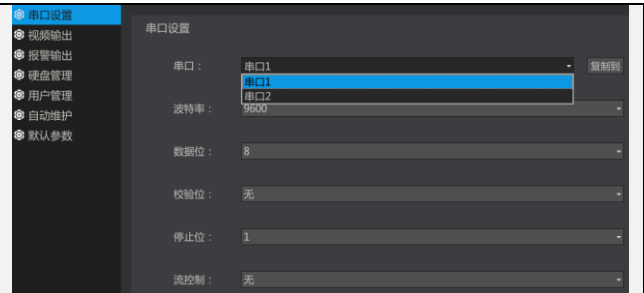


2.11 Advanced settings



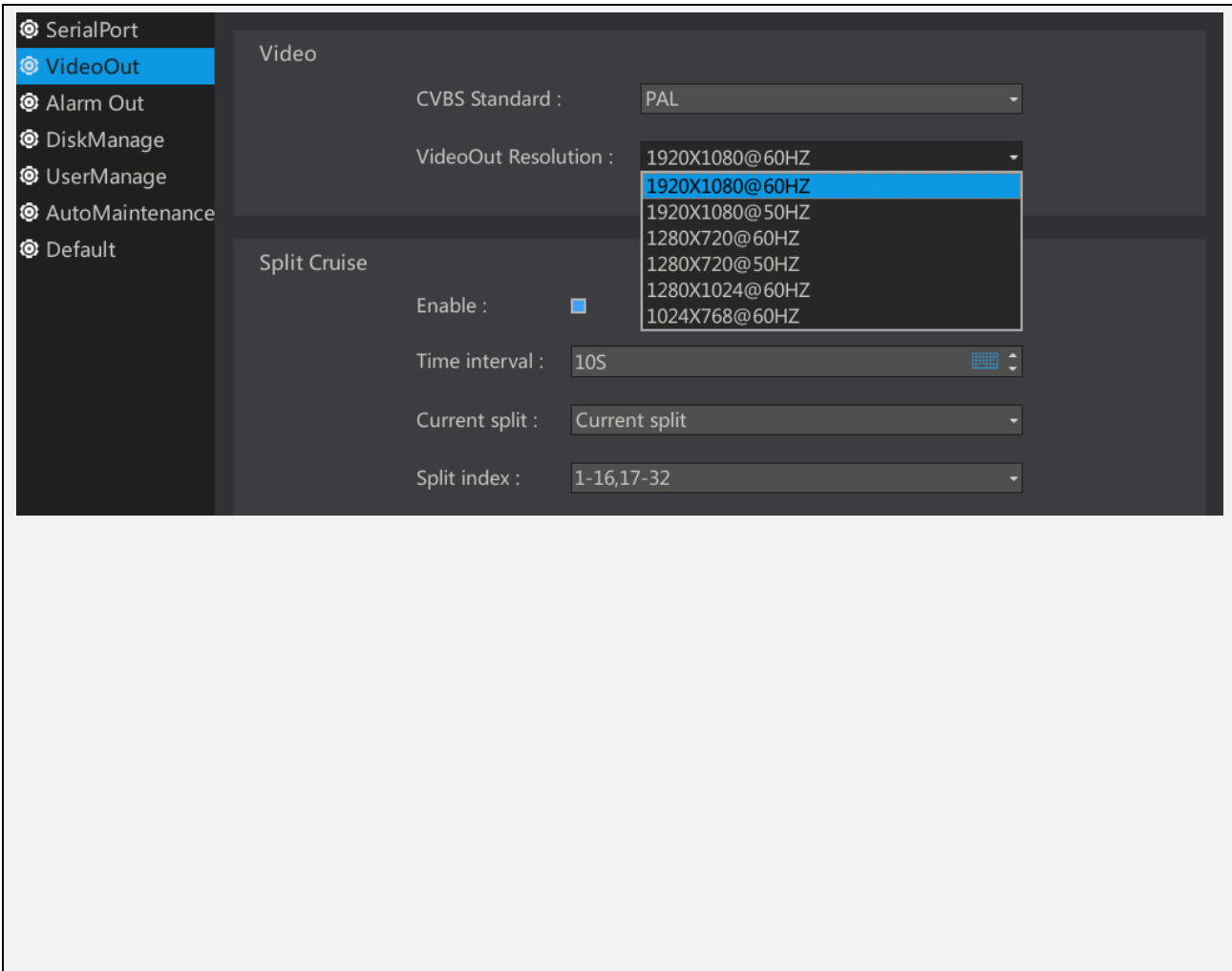
2.11.1 Serial Port Settings

- 1> Depending on the NVR model, some NVRs do not have a serial port, then this option can not be selected.
- 2> How to configure the specific parameters of the serial port Please contact the project management personnel to confirm.



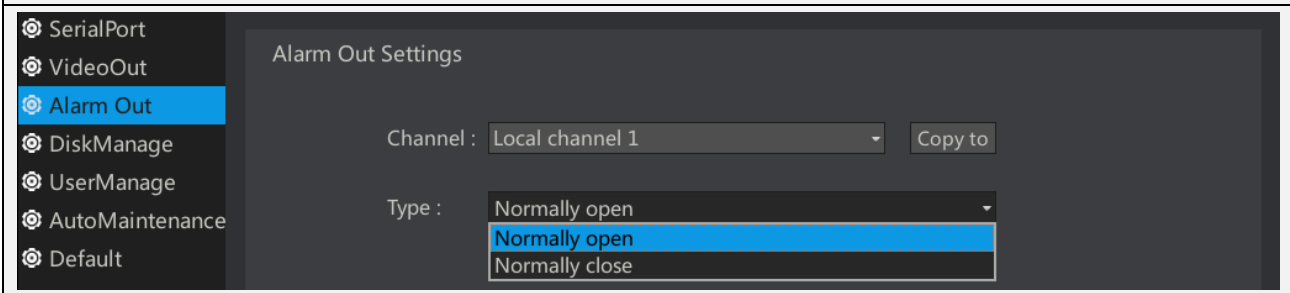
2.11.2 Video output

- 1> Video output resolution: drop-down list to select the appropriate resolution
- 2> Polling parameters: Tick Enable check box to enable polling. Set the polling related parameters here. Check the [Preview] button in the [Main Interface] menu, then the NVR will perform the polling operation according to the rules set by the round-up menu.
- 3> Polling interval: Sets the polling interval. After the setting, the screen will display each channel in turn according to the set time.
- 4> Current Split: Can be set to single screen / 4 screen / 6 screen, and so on.
- 5> Split Index: Select which frames participate in the poll. For example, in a single screen round patrol, you can choose to participate in round-1-15 round patrol. In the four-screen round patrol, you can choose to participate in 1-4, 9-12 round patrol.



2.11.3 Alarm output

- 1> Channel: Select the alarm output channel to be set, and then click the [Copy To] button to copy the settings to the corresponding channel.
- 2> Type: normally open alarm output is an open circuit or high voltage, normally closed refers to the hardware alarm output is closed circuit or low voltage.

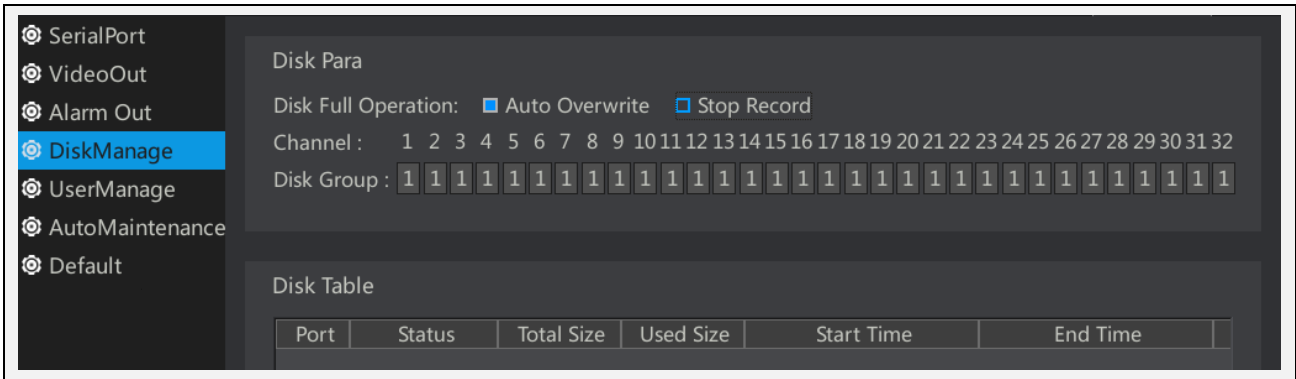


2.11.4 hard disk management

- 1> full disk operation: after checking the automatic coverage . If the hard disk is full, it will be overwritten.
- 2> Disk pack: a total of 32 channels, 8 discs are available for selection. The different channels are grouped into different hard disk recording, video reliability is conducive , and conducive to the provision of equipment performance.
- 3>hard disk list: shows the current device is recognized to the hard disk.

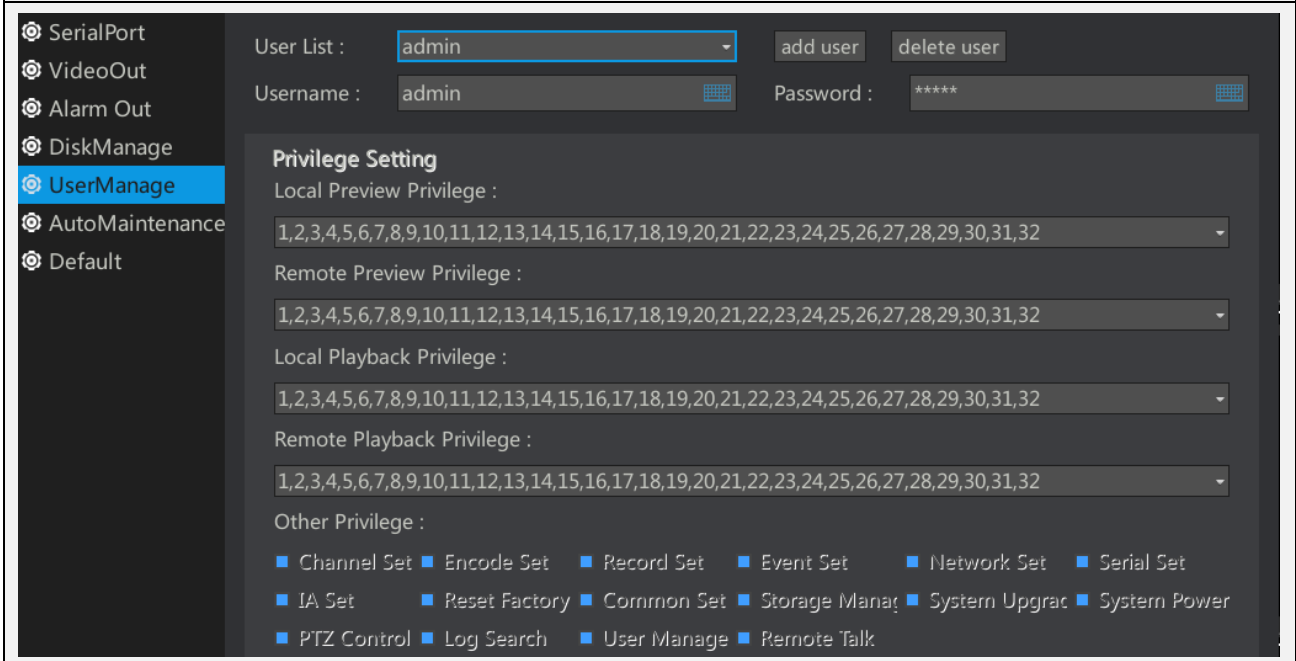


Description: the Unused hard disk needs to be formatted first.



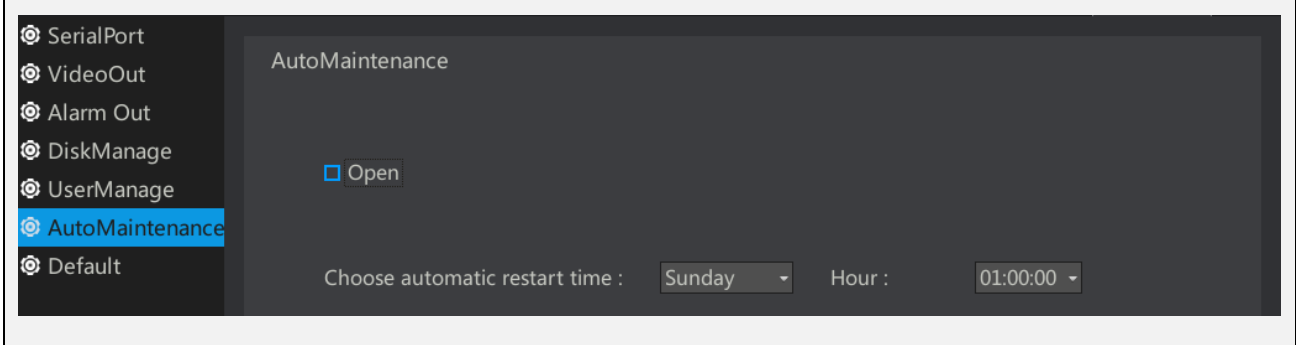
2.11.5 User Management

1>In this menu you can modify add a login account .
2>Permissions settings: you can set the preview and configuration permissions for NVR. Default admin is administrator privileges



2.11.6 Automatic maintenance

1> Open: Enable Auto Maintenance
2> Select Auto Reboot time: optional week and specific reboot time

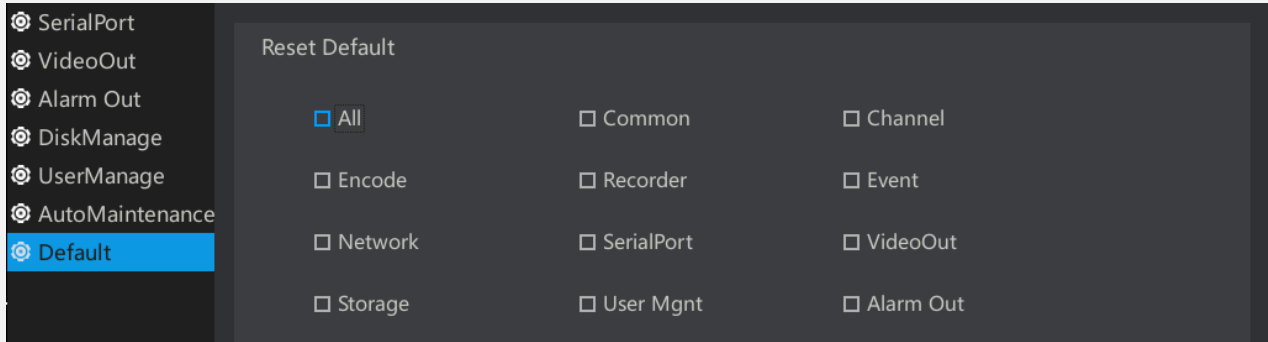


2.11.7 Default parameters

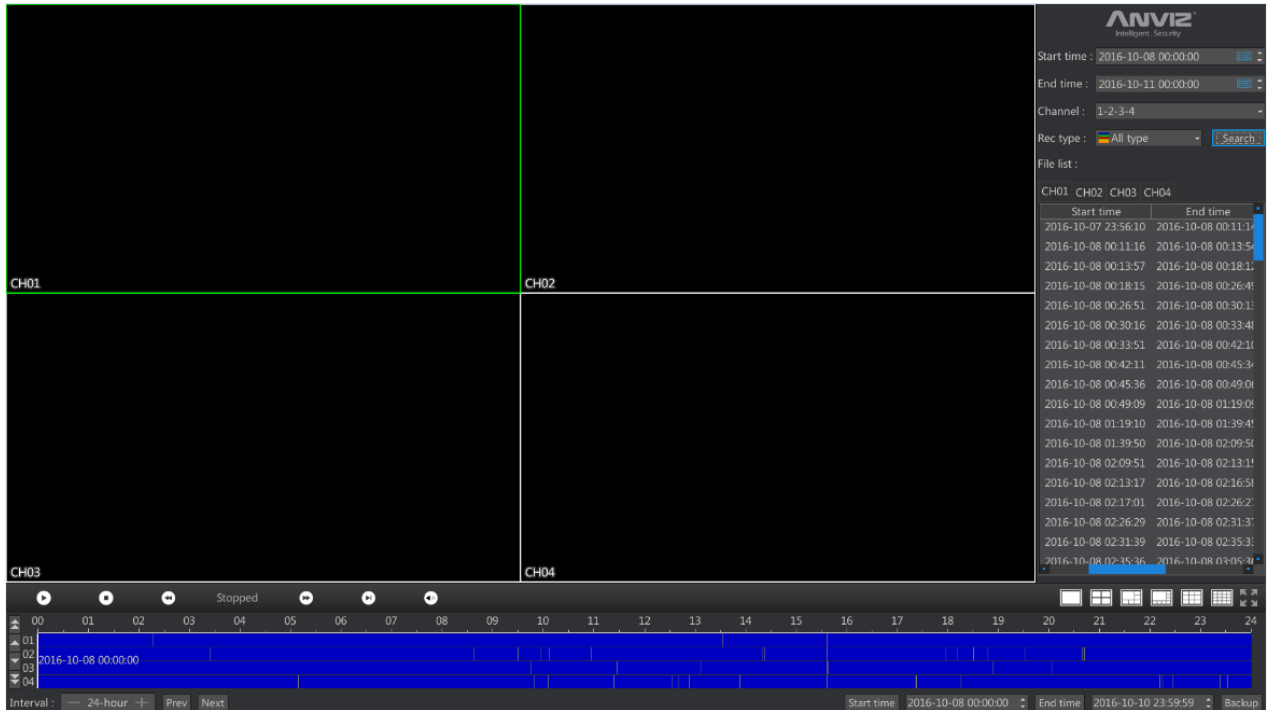
1>The content of this page is used to select the restore full function or part of the function to the factory settings.

2>The default factory IP of the device: 192.168.100.219

3>Default account / password: admin / admin

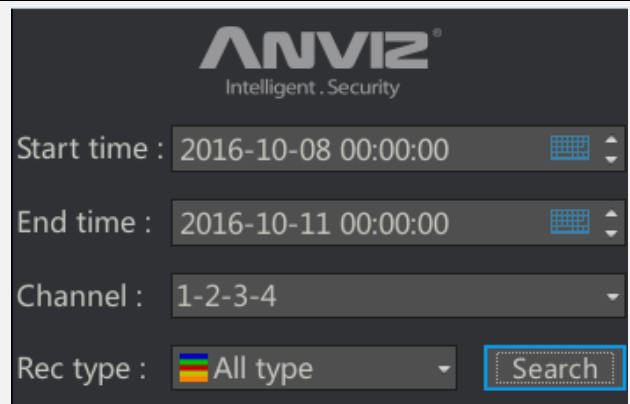


2.12 Video playback



The upper right corner of the interface, search box introduction

- 1> Start Time / End Time: Select the start and end time, you can select the date by the mouse wheel selection, you can manually enter through the soft keyboard.
- 2> Channel: Select the recording channel that need to be queried.
- 3> Recording Type: Select the recording type to be queried, namely manual recording, scheduled recording, dynamic recording and alarm recording. General Click on All Types to search for all types of videos on the timeline. Different types of videos are displayed in different colors.



Introduction to the timeline below the interface

- 1> : Play the video.
 - 2> : Stop recording play.
 - 3> : To play slowly, you can switch between 1/2, 1/4, 1/8 by clicking several times.
 - 4> : Accelerated playback, multiple clicks can be switched between x2, x4, x8.
 - 5> : Frame-by-frame playback. Before clicking the frame-by-frame, you need to pause the recording by clicking the Pause button.
 - 6> : Forward and backward. Control video playback forward or reverse play.
- : Used to select the time unit, 1 hour / 4 hours / 6 hours / 8 hours / 12 hours / 24 hours. In the 1 hour unit, there is a minimum time interval, used to carefully view the minute level of video. Pressing "-" and "+" can be used to select various time units.

The image shows a video player interface with a dark background. At the top, there are playback controls: a play button, a stop button, a previous button, the word "Stopped", a next button, a play button, and a previous button. Below these is a timeline with markers from 00 to 11. On the left side, there are four channel indicators: 01, 02, 03, and 04, each with a small square icon. The video frame itself is a solid blue rectangle. At the bottom left, there is a text label "Interval:" followed by a minus sign, "24-hour", and a plus sign. To the right of this are two buttons labeled "Prev" and "Next".

2.13 Video backup

Video backup interface: the main interface, right-click menu -> video backup

Mobile storage device: plug the mobile memory on USB interface in or plug in the mobile hard disk on ESATA port , then in the first column will display the detected removable memory.

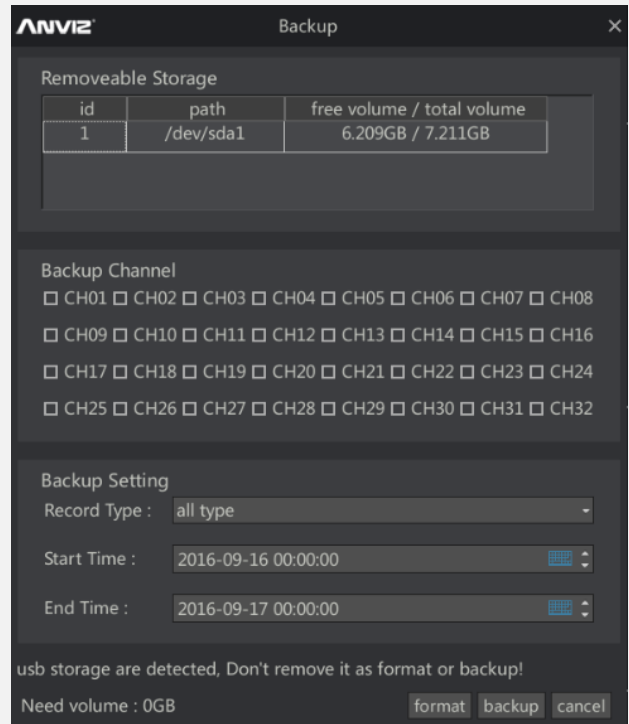


Note: If no memory is detected, Please reformat the memory on the computer. If the remaining capacity of the device is not recognized correctly, click the [Format] button to format the device memory.

- 1> Backup channel: Select the recording channel to be backed up. A total of 32 channels are available.
- 2> Recording Type: Select All, Manual, Schedule or Motion.
- 3> the real time / deadline: select the backup time.
- 4> Bottom Note: After selecting the channel and time, the device will calculate the required hard disk capacity, see the he menu tips of the bottom.
Click the [Backup] button to make a backup.




Note: Do not unplug the memory during the backup process.

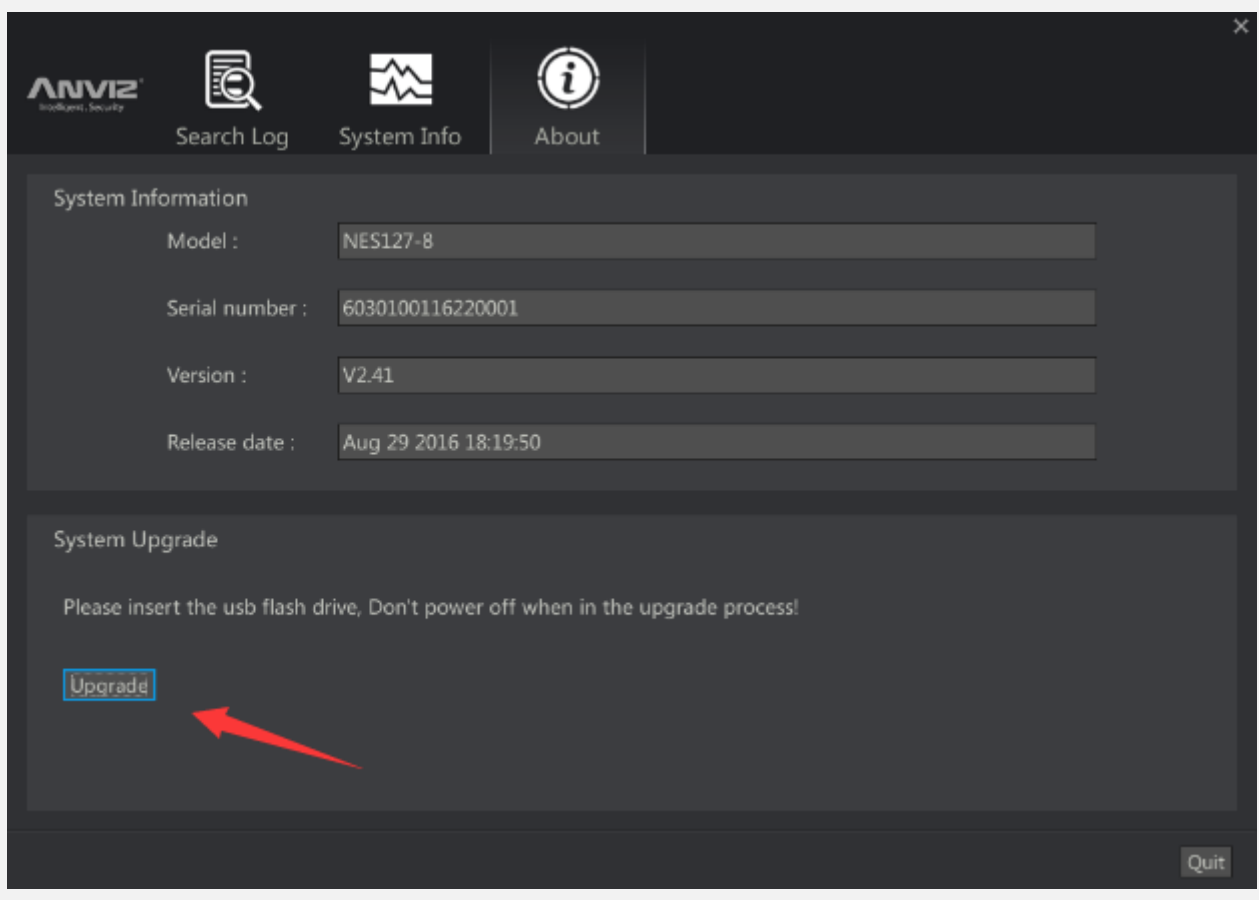


2.14 Maintenance information

about

- 1> System information includes the product model, serial number, system software version number and software release date.
- 2> Insert the USB flash drive with the upgrade file. Click **【Upgrade】** button. In the pop-up menu, select the correct upgrade file to upgrade.
Click **【OK】** to complete the upgrade.

 Note: Do not unplug the USB flash drive or shut down the device during the upgrade process. Doing so will cause the device fail to boot.



View the device operation log

- 1> Select the time period for which you want to query the log, and click Search.
- 2> The device operation log is displayed.
- 3> Backup Log: Click [Backup] button, select the appropriate path in the external USB disk, NVR will be in the specified directory backup TXT format log files.

Start time : 2016-10-10 00:00:00

End time : 2016-10-10 23:59:59

Log type : All type

Search Backup


ID	Operator	Occurrence time	Detailed information
1	admin	2016-10-10 09:18:41	User[admin] remote login
2	admin	2016-10-10 09:25:59	User[admin] local login
3	admin	2016-10-10 09:35:46	User[admin] local logout
4	root	2016-10-10 09:44:09	Power on
5	admin	2016-10-10 09:44:11	User[admin] remote login
6	admin	2016-10-10 09:44:17	User[admin] remote login
7	admin	2016-10-10 09:44:17	User[admin] remote login
8		2016-10-10 09:44:31	Channel1 start i/o alarm
9		2016-10-10 09:44:33	Ip address conflict
10		2016-10-10 09:44:41	Network disconnection

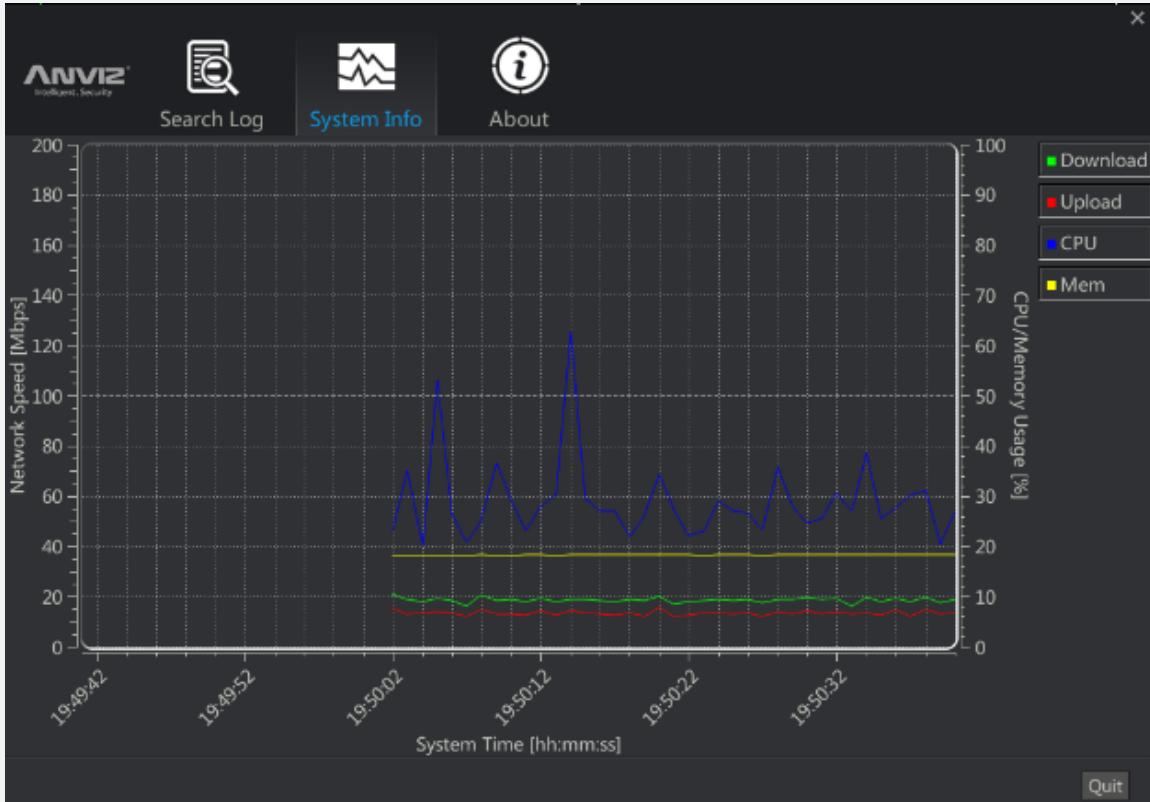
Page:1 / Total Page:2

Quit

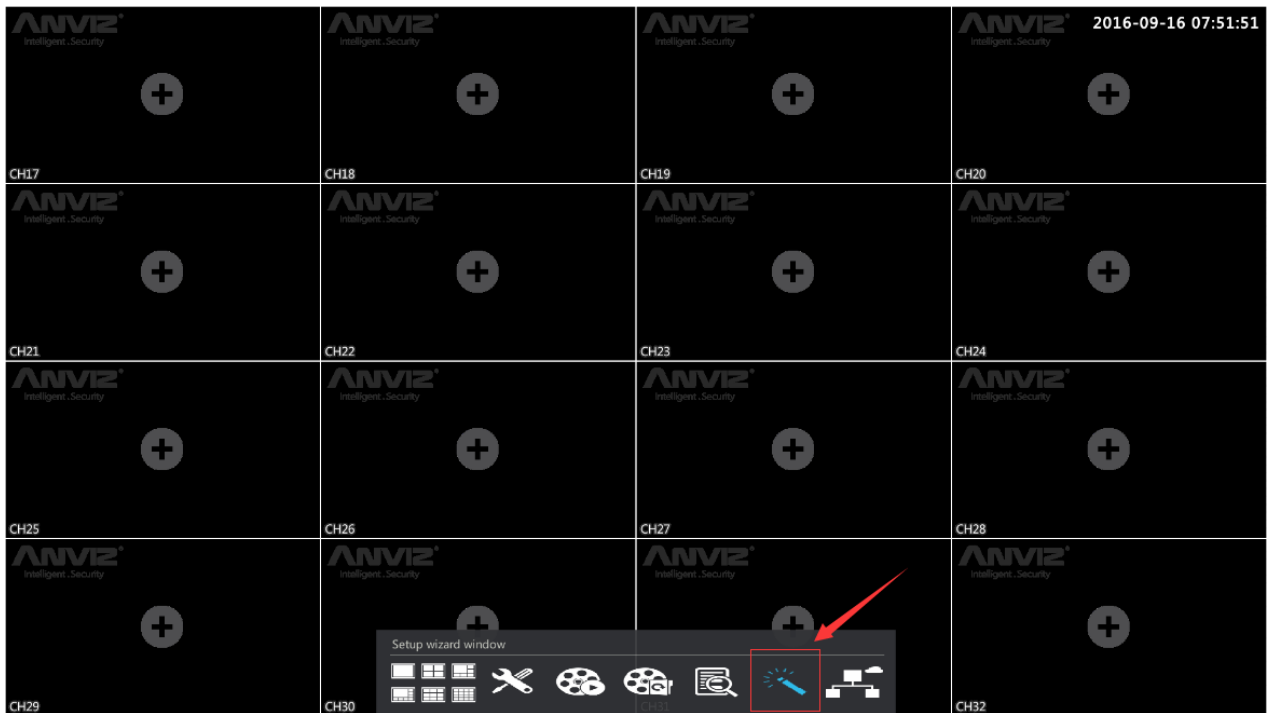
System Information

- 1> Green represents the current access traffic of the NVR. Red represents the forwarding traffic of the current NVR.
- 2> Blue represents the current CPU usage of the NVR. Yellow represents the forwarding traffic of the current NVR

 Note: Depending on the model, the NVR restricts the access forwarding traffic. Be sure not to exceed the nominal traffic of the device.

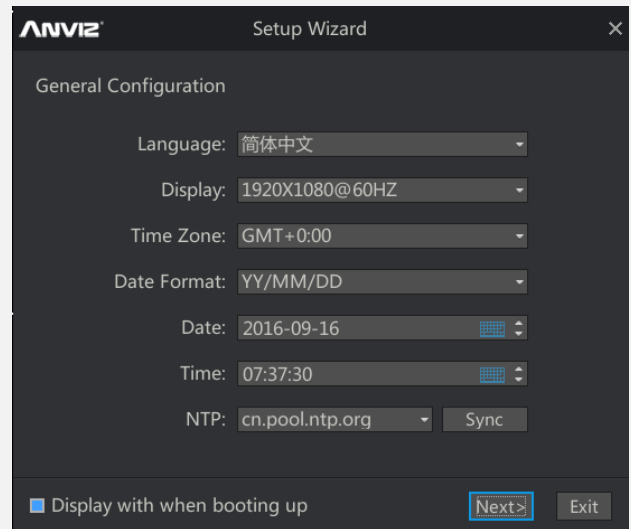


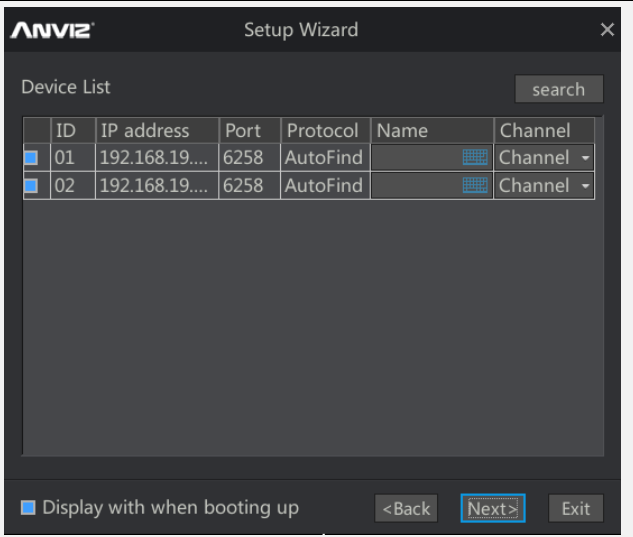
2.15 Setup Wizard


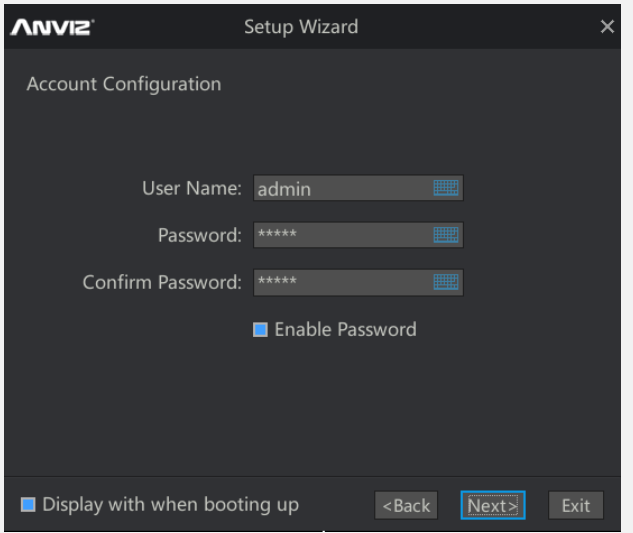



Common settings and device list

- 1> Common settings: can be used frequently to set the customer. Language, resolution, time zone, date format, date, time, NTP. The setting method is the same as in the main menu.
- 2> Device list: Click the Search button to search for devices on the network. The Device List lists the currently added IPCs.
- 3> Check the "Show on start up" item to automatically display the setup wizard.



	 <p>The screenshot shows the 'ANVIZ Setup Wizard' window. At the top, it says 'Setup Wizard'. Below that is a 'Device List' table with columns: ID, IP address, Port, Protocol, Name, and Channel. There are two rows of data, both with ID '01' and '02', IP address '192.168.19...', Port '6258', and Protocol 'AutoFind'. The 'Name' and 'Channel' columns are empty. Below the table is a checkbox labeled 'Display with when booting up' which is checked. At the bottom are buttons for '<Back', 'Next>', and 'Exit'.</p>
--	---

Account settings and mobile remote preview	
<p>1> Account settings: You can change the current password, 2> to disable the 'enable password' option, each boot, enter the system does not require a password, please choose carefully.</p> <p>Mobile phone remote preview: use the phone to scan the left side of the two-dimensional code then install to customer phone 'Remote Preview APP'; use the phone to scan the right two-dimensional code for the customer to add local mobile phone.</p> <p> Note: Each product is only a unique ID, other mobile phone if you need remote browsing, please first delete the product on a mobile phone.</p>	 <p>The screenshot shows the 'ANVIZ Setup Wizard' window. The title is 'Setup Wizard'. The main heading is 'Account Configuration'. It has three input fields: 'User Name: admin', 'Password: *****', and 'Confirm Password: *****'. Below these is a checkbox labeled 'Enable Password' which is checked. At the bottom are buttons for 'Display with when booting up' (checked), '<Back', 'Next>', and 'Exit'.</p>  <p>The screenshot shows the 'ANVIZ Setup Wizard' window. The title is 'Setup Wizard'. The main heading is 'View remote via Mobile'. It lists three steps: 'Step1. Connect Anviz NVR to internet', 'Step2. Scan this QR code, Install Anviz App and register User', and 'Step3. In Anviz App press "+" scan this UID and add device'. Below the text are two QR codes. At the bottom are buttons for 'Display with when booting up' (checked), '<Back', 'Finish', and 'Exit'.</p>

Technical Support

3.1 Frequently Asked Questions

3.1.1 CMI can find the camera, but can not preview the image after adding it

Serial number	Possible causes / solutions
1	Check whether the NVR is on the same network segment as the IPC. Even if the NVR and IPC are not on the same network segment, you can also search IPC. But there is no way to preview the image after adding. You need to use the NVR to modify the address of the IPC, or modify the NVR's IP address to achieve the same network segment.
2	IPC has exceeded its maximum number of connections, there is no way for NVR to get the stream from the IPC. Please refer to the IPC manual to confirm the current number of IPC connections.

3.1.2 ONVIF can find out the camera, but after adding the camera can not preview images

Serial number	Possible causes / solutions
1	You can find out ONVIF camera, this means NVR and IPC network segments have no problem. The possible reason is a wrong ONVIF account, wrong password, and port. Please check the right information of IPC.
2	Since the manufacturers of the camera are different, so please confirm that the IPC is in NVR ONVIF support list. If not in the list and the connection is unsuccessful, please contact our technical support for help.

3.1.3 Can not recognize the mobile memory during back up process

Serial number	Possible causes / solutions
1	Memory may be just bought. Need to perform initialization on the PC, and format it.

3.1.4 Identify mobile memory capacity errors during backing up

Serial number	Possible causes / solutions
1	Memory of the file system does not match the NVR, please use the NVR to format the memory, you can identify the correct capacity.

3.1.5 Why can not find out an earlier video file

Serial number	Possible causes / solutions
1	Please make sure the hard drive is large enough. NVR default will cover the hard disk video loop, so if the time is too long, the early videos will be covered.

3.1.6 In the process of upgrading, unplug the memory or restart the device can not boot the device ,how to deal with this

Serial number	may cause / solution
1	1 equipment curing procedure is damaged, please contact our technical support ask for equipment replacement.

3.2 Hard disk space consumption

A list of storage space occupied by single channel code		
Resolution / stream size	time	occupied space
1080P/4M	1 hour	1.75G
1080P/4M	1 day	42.2G
1080P/4M	1 week	295.4G
1080P/4M	1 month	1266G
720P/2M	1 hour	0.875G
720P/2M	1day	21.2G
720P/2M	1 week	147.7G
720P/2M	1month	633G
NVR access to the 32 channel 720P/2M code stream, stored for 1 weeks requires 4.6T hard disk space		
NVR access to the 4 channel 720P/2M code stream, storage for 1 weeks require 576G hard disk space		