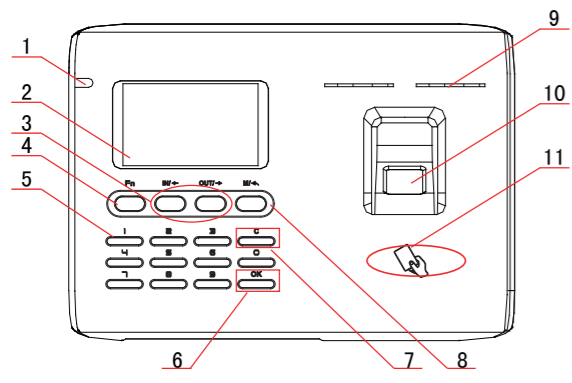


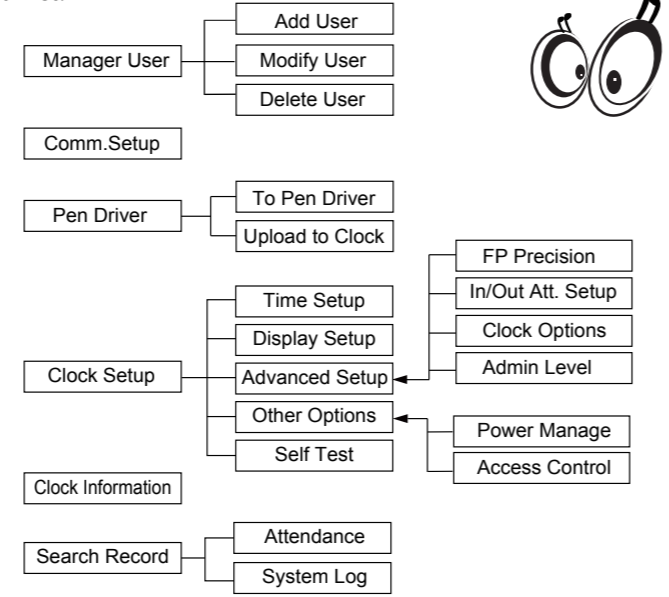
Product Appearance



- 1. LED
- 2. LCD
- 3. Status Key /Direction key
- 4. Function Key
- 5. 0-9 Num.Key
- 6. Confirm Key
- 7. Delete Key
- 8. Menu/Back Key
- 9. Speaker
- 10. Fingerprint Sensor
- 11. Swipe Card Area

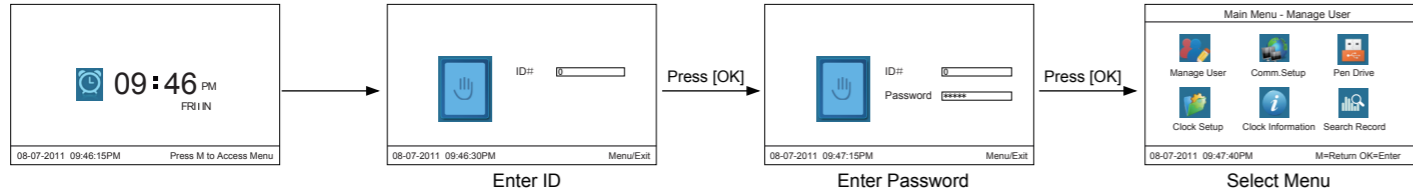
Menu

The Terminal automatically turns on when plugged into a power source. Administrator ID and Password to enter the management menu.
Menu List:



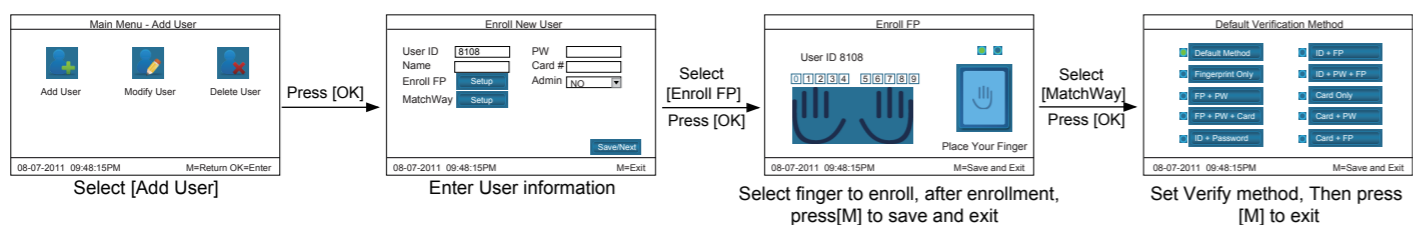
Operation Guide

Enter management menu: Input ID '0' and press[OK], Input default management password '12345' and press[OK] enter management menu.



Add User: Each user can register 10 fingerprints, one password and one card. To enroll each fingerprint, you must place the same finger on the sensor two times consecutively.

- Add user information : (Select [Manage User] and press [OK])



Set Communication parameter:

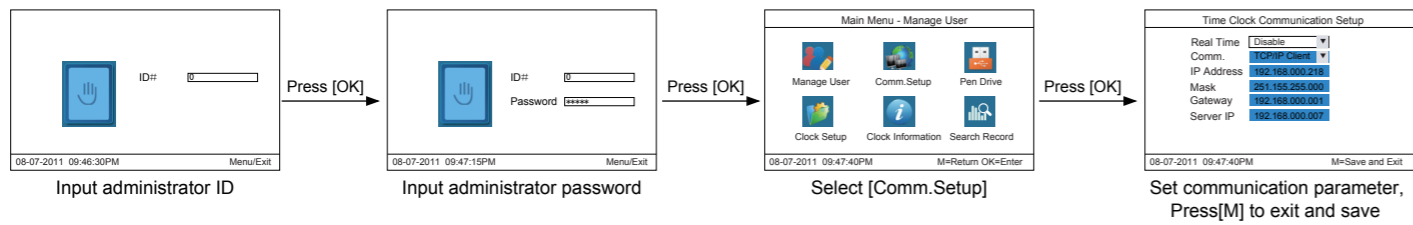
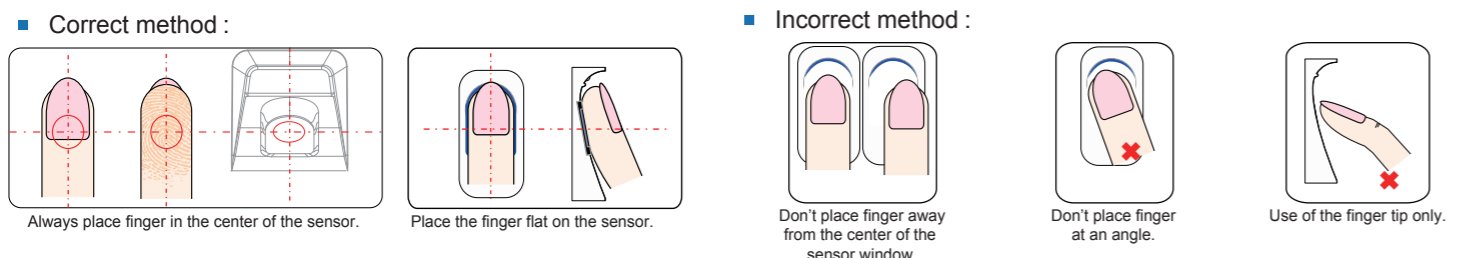


Illustration for placing finger



OtherSetup

Item	Explanation	Default
Real Time	Collect the attendance records from terminal in realtime When you use Real-time monitoring function of the software you need to enable it.	Disable
Comm.	TCP/IP Server mode: Common network mode. TCP/IP Client mode: Only communicate with the PC which has server IP	ServerMode
IP Address	To enable network communication, configure the terminal with a static IP address.	192.168.000.218
Mask	Subnet Mask of the LAN	255.255.255.000
Gateway	Default Gateway of the LAN	192.168.000.001
Server IP	It is the IP address of managing PC when set TCP/IP communication. The address must be set in 'Client mode'	192.168.000.007

Item	Explanation	Default
1 : N	The fingerprint to be verified will be matched with all the fingerprint templates in the database automatically.	80%
1 : 1	The fingerprint to be verified will be matched with the fingerprint template of the specific user ID.	90%
AutoUpdate	In the process of verifying fingerprint, the system will replace the old low quality fingerprint template with the new high quality fingerprint template.	YES
VerifyMode	set default verify methods for terminal.	
All User Verify	Set verify methods for all users. Now all the users will be configured to use the same verification method.	

Item	Explanation
All Records	Download all attendance records and will establish an Anviz-c folder in the root path of the U pen driver. The attendacne record file extension.KKQ
New Records	Download the new attendance records and will establish an Anviz-c folder in the root path of the USB flash drive. New attendance record file extension.NKQ
All Users	Download all user information and fingerprints. There are two files stored in the Anviz-c folder. User information file extension.YG, User fingerprint file extension.ZW.
Some Users	Download designated users information.

Item	Explanation	Default
Re-Verify Interval (0-250)	The duration of time in which the terminal will ignore repeated attempts for authentication.[0]: Disable the function; Max. value is 250 min.	0
Log Capacity Warning(0-5000)	The terminal will alarm when the memory capacity is less than the [Log Alert] value.[0]-Not alarm. Max. value 5,000.	1000
Auto In/Out Status Switch	Automatically switch the attendance status following the shift rule of the user.	

Item	Explanation
Time/Date	Set the time and date of the terminal
DST Setup	Enable/Disable daylight Saving Time. Select DST define mode: Week/Date.

Item	Explanation	Default
Volume	Set the terminal voice volume.0-[mute], 5-[Max]: 0-5	5
Password	The password to enter management mode	12345
Device ID	Device ID of the terminal which is required in software communication	1
Reset to factory settings	This sets the system back to factory default settings. This will erase all data stored in the device.	

Item	Explanation	Default
Language	The Language of the menu	please refer to the subject product
Date Format	Setup the Date format on the LCD	YYYY-MM-DD
Time Format	Setup the Time format on the LCD	24 Hour
FP Image	Choose to display fingerprint image during verification.	Show

Item	Explanation	Default
Admin Level	Different groups for admins with different permissions	
Relay control	Select relay work mode: 'Open Door' or 'Ring Bell'	Open Door
Lock Delay 0-15Sec	Time range for the door open delay.	5

Wiring Diagram

