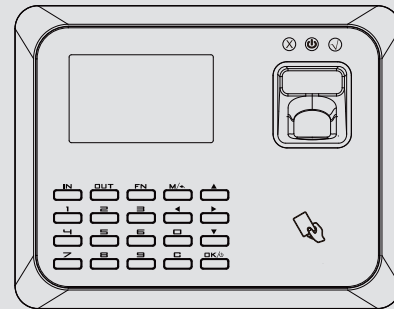


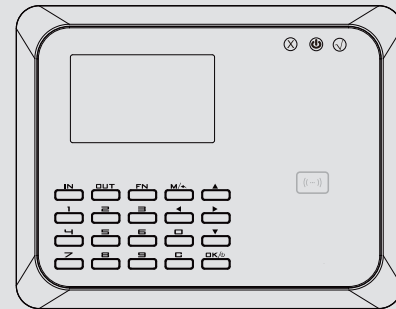
# C5/C5C

Fingerprint & RFID Access Control Device with Colorful Screen

## Quick Guide v2.1

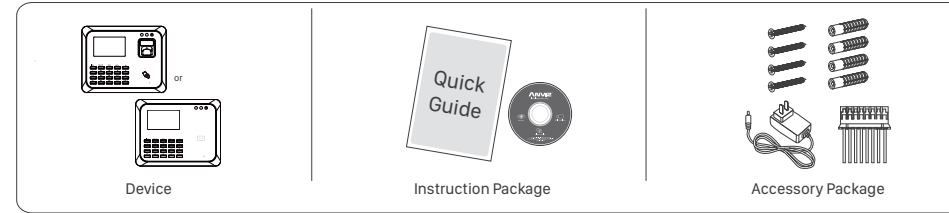


C5

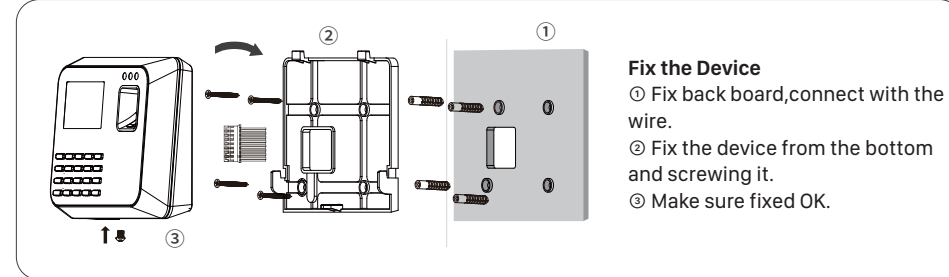


C5C

### 1. Packing list



### 2. Installation Diagram & Installation Step



### 3. Operation Guide

#### • Basic settings

Plug in the power supply and wait for the device boot up.

Press [M] key to go to Admin menu. Input "0" as ID and "12345" as password to log in. \*0/12345 is the default Admin ID and password. You can change to your own the password or set other user as Admin later.

Browser the Setting/Device menu to view or edit the Device ID and Admin PIN Code.

Go to Setting/Time menu to set up date and time.

#### • Add Users to Device

Go to User\Add menu. Follow the menu to input ID, name and password. Move the cursor to "card" section and click [OK] key.

Swipe the card at card mark area, and the device will get the card number, and then move the cursor to "Enroll FP" section and click [OK] key.

Scan the same finger three times to enroll the fingerprint.

#### • Ethernet Settings

Go to Network menu.

Go to Internet menu to set up WAN mode as 'Ethernet' and input the DNS server IP address.

Go to Ethernet menu to change TCP/IP settings.

Go to Comm Mode menu to select Server or Client mode.

#### • Wifi Settings

Go to Network/Internet menu to set up WAN mode as 'WiFi' and input the DNS server IP address.

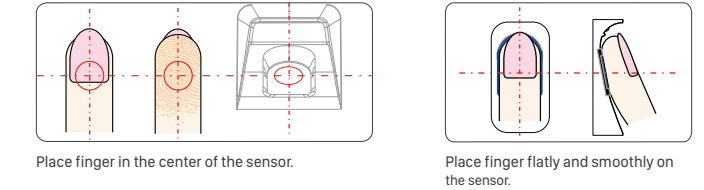
Go to Comm mode menu to select Server or Client mode.

Go to WiFi menu to change TCP/IP settings, then select 'add WiFi' to go to the second window.

Device will search WiFi network automatically. Select the WiFi network and input password.

### 4. Verity the Fingerprint

#### • Correct method:



#### • Incorrect method:



#### \* NOTE:

- It is better for each user to register two fingerprints in case of one finger can't work.
- Place Finger flat and make sure the center of the finger is on the center of scanner window and press a little hard on scanner, so it can scan as large finger area as possible to extract enough minutia.
- Keep the angle and direction of finger the same each time placing on scanner.
- If your finger has sweat or water, please dry it first and then register the finger.
- If your finger is too dry, make it a little wet or touch the forehead to increase the wetness of the finger, press a little hard on scanner. (The dry finger can cause the finger image not coming out clear enough.)
- Avoid the callus, peeling, or injury of the finger to ensure the register and identification successful.
- You can register the thumb first, and then index finger or middle finger to increase the precision.

## 5. Wiring instruction

J12 Extended function interface:

Function	Relay Output	Exit Button	GND	Wiegand Input		RS232R	RS485A	Power
	NC			W1	W10			
No.	15	13	11	9	7	5	3	1
Function	NO	COM	Door Sensor	Wiegand Output		RS232T	RS485B	GND
	W01	W00						
No.	16	14	12	10	8	6	4	2

## 6. C5/C5C & Switching Power Supply

RS-232 Interface used in Printer:

DB9 Function	Pin	C5/C5C Function	Pin
TXD	2	RX	5
RXD	3	TX	4
GND	5	GND	6

## 7. C5/C5C & Access Control Power Supply

## 8. C5/C5C & Anviz SC011

SC011 can work with C5 by Anviz encrypt Wiegand code authorized to set up a distributed access control system. Wiegand mode must be set to 'AnvizWiegand' by PC software. You can buy SC011 from our sales.

**Important notice:**  
Please follow the wiring diagram as it is displayed. Damaged products due to improper wiring are not covered under the product warranty.

## 9. Working with Management Software

- Install the Management Software on Computer  
Put the CD in the management computer .The installation program will run automatically.

How to connect the Device with Software?

- Method : RS485  
Connect Cable between device and PC which has installed software.

- Method : Connect to Network

Right click on the device icon and choose 'Set the IP configuration' to set correct network environment parameters such as above window.

- Enable Communication between Device and the Management Software CrossChex

- Turn on management software CrossChex.
- Go to Device tab.Search and Add the device to management software CrossChex.
- Click Synchronize Time button to communicate with Device. IF Synchronize is successful,the device icon will turn to blue.

- The Management Software CrossChex Features

- Device\Backup User :Download user info from Device to CrossChex.
- Device\Download Records: Download records from Device to CrossChex.
- User\Modify:Edit name or other user info.Then click "Upload User"to Upload user info to device.
- Record\Search:Search and view the records.
- Attendance:Calculate,Search results and Generate reports.
- Data\Backup Database:Backup Database.
- Setting\Shift:Set up Time Table and Scheduling.
- Device\Device Parameter:Set up device.Clear records on Device or Reset Device to factory settings.

Any questions?Please feel free to send emails to support@anviz.com to get support.