

# VF30/VP30

PoE Fingerprint / RFID Access Control



## Versatile, Convenient, Multi-functional

VF30 (fingerprint) / VP30 (RFID) are professional access control products designed for small to medium enterprises requirement of security.

They integrate fingerprint identification, RFID, PoE TCP/IP communication, time attendance and access control functions, with fashion and elegant appearance and reliable structure. With standalone access control software – AIM, VF30/VP30 offer group access control for high security level. The best combination of Function and Price.



# Highlight



## Easy-to-use

1. Auto wake/sleep
2. Support various verification mode: fingerprint, Password, Card
3. Illuminated blue button and simplicity semi-transparent button design are easy for day/night operation
4. Reset button
5. Function keys Fn, In, Out are convenience to manage and switch work code and time attendance status

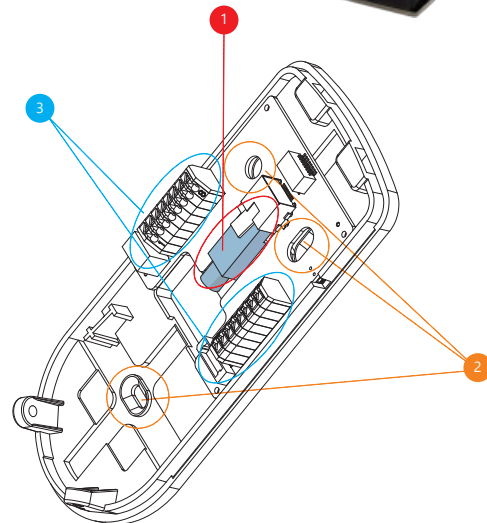


## Fingerprint Algorithm

1. The latest Anviz BioNANO algorithm increase the fingerprint verification angle from  $\pm 15^\circ$  to  $\pm 45^\circ$  300% upgrade.
2. Optimization the Fingerprint feature points storage, the fingerprint verification speed improved double.

## Optical Fingerprint Sensor

1. Anviz waterproof, dustproof and scratchproof AFOS series fingerprint sensor.
2. Infrared Optical Imaging Technology.
3. Just touch on to active device.



## Easy Installation

1. Power Over Ethernet provides device network communication and the power is sufficient for both device and lock to operate.
2. Adjustable mounting hole design.
3. Wire connecting terminal for improved connection efficiency.

# Parameters

Activation mode	Touch
Scan Area	22mm*18mm
Resolution	500 DPI
LCD	128*64 white LCD
Fingerprint Capacity	2,000 (VF30)
Card Capacity	2,000 (VF30) 20,000 (VP30)
Log Capacity	50,000 (VF30) 200,000 (VP30)
Identification Mode(VF30)	FP, Card, PW
Identification Mode(VP30)	Card, PW
Identification Time	<0.5 Sec
Communication Interface	RS485, Mini USB Slave, PoE-TCP/IP, Wiegand In/Out
Card Reader	Standard EM Card, Optional Mifare
Fingerprint Image Display	Yes
Self-defined Status	16 Customizable time and attendance status
Workcode	6- digit work code
Short Message	50
Scheduled Bell	30
Relay	DC 12V, Relay Output (COM, NO, NC)
Door Open Sensor	Yes
Tamper Alarm	Yes
Operating Voltage	DC 12V
Dimensions(WxHxD)	80x180x40mm(3.15x7.1x1.6")
Temperature	-30 C ~60 C
Ingress Protection Rate	IP53 (Optional Waterproof Cover)
Certificates	CE, FCC, RoSH
Soft	Anviz Crosschex Standard

## Anviz Global

Email: [sales@anziv.com](mailto:sales@anziv.com)

URL: [www.anziv.com](http://www.anziv.com)

## Distributor



**ANVIZ**® and **BioNANO**® are registered trademarks of Anviz Global and cannot be used without written permission from Anviz. Due to our consistent effort to improve our products, their appearance and specifications are subject to change without prior notice.





# CrossChex

## Time Attendance and Access Control Management System

CrossChex is an intelligent management system of access control and time attendance devices, which is applicable to all Anviz access controls and time attendances. The user-friendly and interactive design makes this system very easy to operate, the powerful function makes this system realize the management of department, staff, shift, payroll, access authority, and exports different time attendance and access control reports, satisfying different time attendance and access control requirements in different complicated environments.



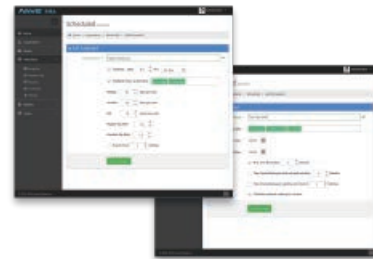
**Desktop**  
For small & medium Business T&A, A&C all in one system



**Professional**  
For enterprise web base management system



**Cloud**  
For global cloud system



**Device Management**  
Quick add device by network automatic search, Configure Anviz Biometric device and real time monitoring device connection.



**Access Control Management**  
Control up to 16 access groups and 32 time zones, door state monitoring and remote door control by administrator.



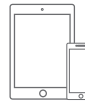
**Shift Management**  
Support daily/hourly shift schedule and intelligent shift schedule for different type of the employee. Flexible to meet enterprise management requirements.



**Report Management**  
Daily/individual summary and report, work hour displayed by hourly category. support CSV and xlsx export. Support report format design.



**Human Resources Management**  
Multi levels administrator and department settings, Mail push report the Administrator.



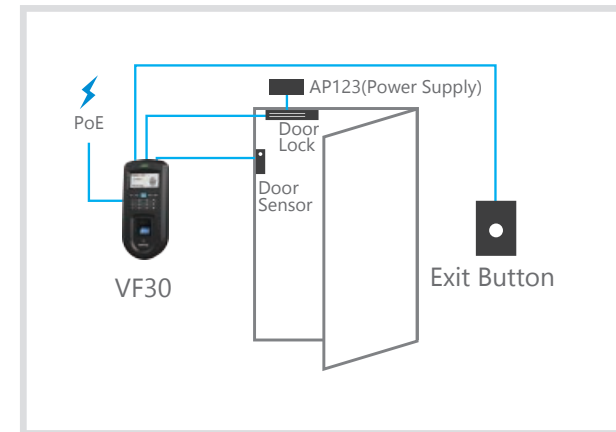
**Mobile Management**  
Mobile APP function makes the time attendance and records check everywhere.

## Application

Flexible applications such as standalone, secure and network system for different industries.

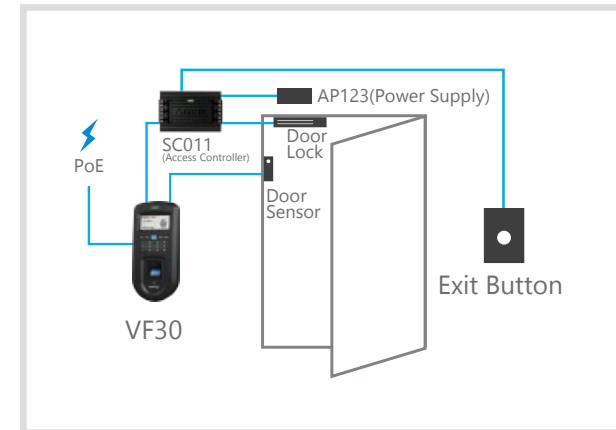


## Network Topology Illustration



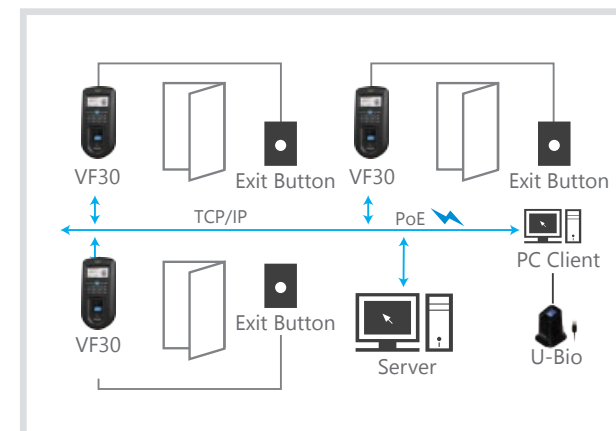
### Standalone Access Control System

The core part of this system is stand alone access control. With the lock directly controlled by the standalone access control, this system is able to supply easy and safe solution.



### Secure Access Control System

The secure system consists of an access controller and reader. Because the lock is controlled by the access controller, this system is more secure and suitable for a single door having higher safety requirement.



### Network Access Control System

The network access control system consists of different access control systems such as stand-alone system, secure system and distributed system. This system is the most professional solution, which best fits projects with multiple requirements.