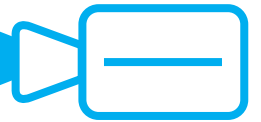


Surveillance

Intelligent HD Video Solutions





IntelliSight

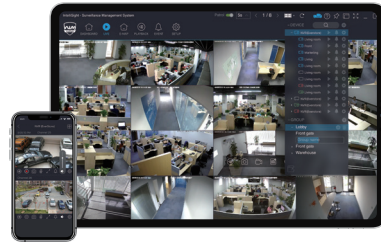
Intelligent Surveillance Management System

IntelliSight is an application software matched with embedded network surveillance devices launched by ANVIZ. It can be used with NVR IPC. You can easily manage the function of preview, playback, event alarm, E-map function with IntelliSight. Through its cloud based function, you can manage your video system anytime and anywhere.



Desktop

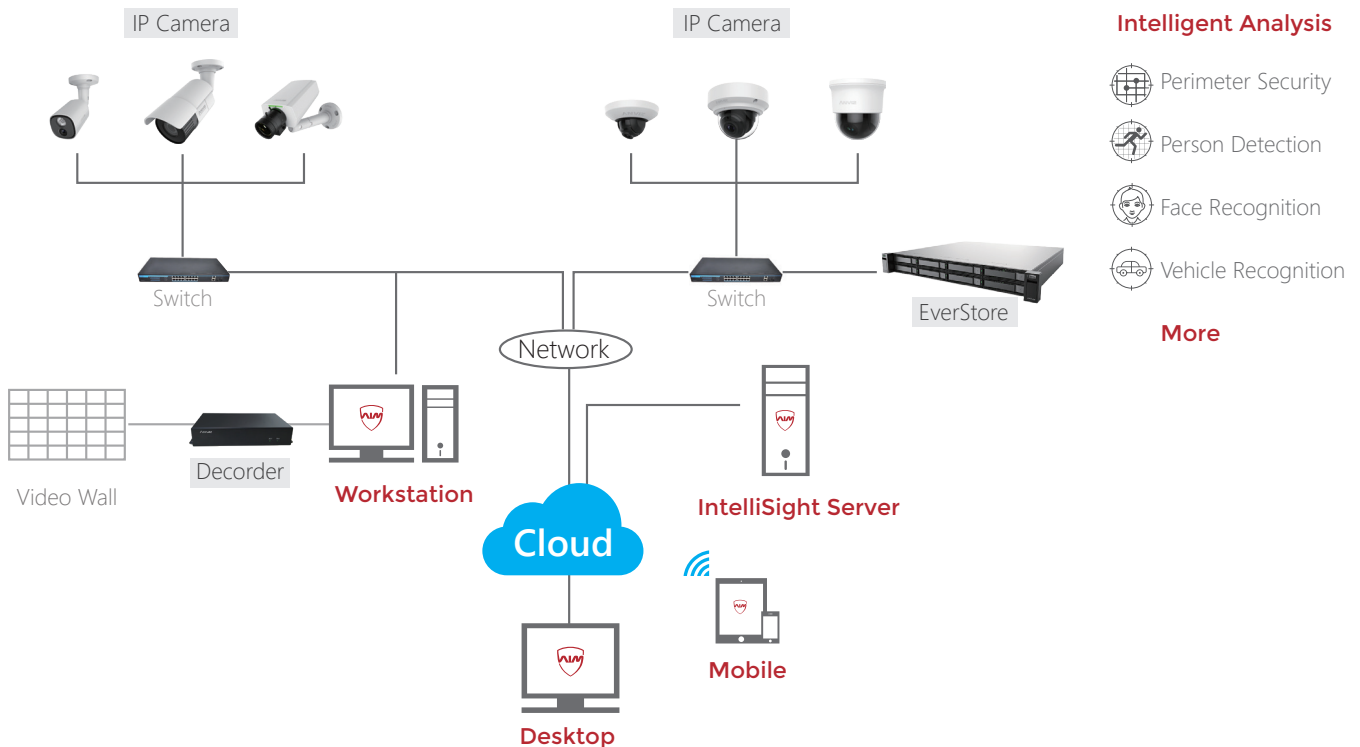
ANVIZ surveillance maintenance and management client provides you a customized layout of preview, easy installation and configuration, multi-terminal synchronization of intelligent alarm, and a more humanized daily security.



Mobile

Mobile app gives you quick and easy access to local and remote viewing of real-time video streaming, high security user management, flexible sharing of profile, optimized installation and configuration, easy to use.

- Central Management of Anviz IPC and NVR
- Quick auto finding devices and setup parameters
- Maximum 128 Channels Preview
- Support local, Event and Customized Recording
- E-map function for easy managing and alarm auto pop out
- Cloud function for quick and flexible Access
- ACP technology ensure the cyber security



Intelligent Analysis

- Perimeter Security
- Person Detection
- Face Recognition
- Vehicle Recognition

More



Financial



Corporation



Hospital building



School building



Government building



Retail Stores

EasyView			
Mode	EA4502-IRA	EA6502-IREA NEW	EA4502-IREB
Picture			
Resolution	2MP	2MP	2 MP
Image Sensor	1/2.9" CMOS	1/2.7" CMOS	1/3" CMOS
Lens	4mm/F1.2	4mm/F1.2	4mm/F1.2
WDR	DWDR	WDR	DWDR
Horizontal Angle of View	77°	80°	77°
Minimum Illumination	0.01 Lux @(F1.2,AGC ON); 0 Lux with IR	0.01 Lux @(F1.2,AGC ON); 0 Lux with IR	0.01 Lux @(F1.2,AGC ON); 0 Lux with IR
Frame Rate	30fps (1920×1080, 704×576)	30fps (1920×1080, 704×576)	30fps (1920×1080, 704×576)
IR Range	Up to 30m	Up to 30m	Up to 30m
D/N	IR-CUT	IR-CUT	IR-CUT
Audio	N/A	N/A	N/A
Shutter Time	1s~1/100000s	1s~1/100000s	1s~1/100000s
Compression	H.264/MJPEG, Smart H.264	H.265/MJPEG, Smart H.264	H.264/MJPEG, Smart H.264
Internet Interface	RJ-45(10/100Base-T)	RJ-45(10/100Base-T)	RJ-45(10/100Base-T)
Supported Protocols	TCP/IP, ICMP, HTTP, HTTPS, FTP, DHCP, DNS, DDNS, RTP, RTSP, RTCP, PPPoE, NTP, UPnP, SMTP, SNMP, IGMP, 802.1X, QoS, ONVIF		
Alarm Input/Output	N/A		
Power	DC12V	DC12V/PoE(802.3af)	
Environmental	-30°C to 60°C (-22°F to 140°F)		
Protection	IP65		IP66
Edge Storage	N/A		
Others	3D DNR, BLC		
Intelligent Alarm	N/A	Person Detection	N/A





EcoView			
Mode	EC6502-IRE NEW	EC6502-IRW NEW	EC4502-IREB
Picture			
Resolution	2 MP	2 MP	2MP
Image Sensor	1/2.7" CMOS	1/2.7" CMOS	1/2.9" CMOS
Lens	4mm/F1.2	4mm/F1.2	4mm/F1.2
WDR	WDR	WDR	DWDR
Horizontal Angle of View	80°	80°	77°
Minimum Illumination	0.01 Lux @(F1.2,AGC ON); 0 Lux with IR	0.01 Lux @(F1.2,AGC ON); 0 Lux with IR	0.01 Lux @(F1.2,AGC ON); 0 Lux with IR
Frame Rate	30fps (1920×1080, 704×576)	30fps (1920×1080, 704×576)	30fps (1920×1080, 704×576)
IR Range	30m		
D/N	IR-CUT		
Audio	N/A		
Shutter Time	1s~1/100000s		
Compression	H.265/MJPEG, Smart H.265		H.264/MJPEG, Smart H.264
Internet Interface	RJ-45(10/100Base-T)		
Supported Protocols	TCP/IP, ICMP, HTTP, HTTPS, FTP, DHCP, DNS, DDNS, RTP, RTSP, RTCP, PPPoE, NTP, UPnP, SMTP, SNMP, IGMP, 802.1X, QoS, ONVIF		
Alarm Input/Output	N/A		
Power	DC12V/PoE(802.3af)		
Environmental	-30°C to 60°C (-22°F to 140°F)		
Protection	IP66		
SD card slot	support up to 128G micro SD card (suggest class 10)		
Others	3D DNR, BLC		
Intelligent Alarm	Person Detection		N/A







HiView			
Mode	HI4501-IRE	HI4501-IRW	HI6501-IRW NEW
Picture			
Resolution	2MP	2MP	2MP
Image Sensor	1/2.9" CMOS	1/2.9" CMOS	1/2.7" CMOS
Lens	2.4mm/F1.2	2.4mm/F1.2	2.8mm/F1.2
WDR	DWDR	DWDR	WDR
WIFI	No	Yes	Yes
Minimum Illumination	0.01 Lux @(F1.2,AGC ON); 0 Lux with IR	0.01 Lux @(F1.2,AGC ON); 0 Lux with IR	0.01 Lux(Color)/0.001 Lux(B/W)
Frame Rate	30fps (1920×1080, 704×576)	30fps (1920×1080, 704×576)	30fps (1920×1080, 704×576)
IR Range	15m	15m	15m
D/N	IR-CUT	IR-CUT	IR-CUT
Audio	N/A	Built in MIC and Speaker	Built in MIC and Speaker
Shutter Time	1s~1/100000s	1s~1/100000s	1s~1/100000s
Compression	H.264/MJPEG, Smart H.264	H.264/MJPEG, Smart H.264	H.265/Smart H.265
Internet Interface	RJ-45(10/100Base-T)	RJ-45(10/100Base-T)	RJ-45(10/100Base-T)
Supported Protocols	TCP/IP, ICMP, HTTP, HTTPS, FTP, DHCP, DNS, DDNS, RTP, RTSP, RTCP, PPPoE, NTP, UPnP, SMTP, SNMP, IGMP, 802.1X, QoS, ONVIF		
Alarm Input/Output	N/A		
Power	DC12V/POE(802.3af)	DC12V	
Environmental	-30°C to 60°C (-22°F to 140°F)		
SD card	support up to 128G micro SD card (suggest class 10)		
Others	3D DNR, BLC		
Intelligent Alarm	N/A		Person Detection

JustView			
	JU4502-IRE	JU6501-IREW NEW	JU6501-IRE NEW
Resolution	2MP	2MP	2 MP
Image Sensor	1/2.9" CMOS	1/2.7" CMOS	1/2.7" CMOS
Lens	4mm/F1.2	2.8mm/F1.2	2.8mm/F1.2
WDR	DWDR	WDR	WDR
WIFI	No	Yes	No
Minimum Illumination	0.01 Lux @(F1.2,AGC ON); 0 Lux with IR	0.01 Lux @(F1.2,AGC ON); 0 Lux with IR	0.01 Lux @(F1.2,AGC ON); 0 Lux with IR
Frame Rate	30fps (1920×1080, 704×576)	30fps (1920×1080, 704×576)	30fps (2560×1440, 704×576)
IR Range		Up to 25m	
D/N		IR-CUT	
Audio		Built in MIC	
Shutter Time		1s~1/100000s	
Compression	H.264/MJPEG, Smart H.264	H.265/MJPEG, Smart H.265	
Internet Interface		RJ-45(10/100Base-T)	
Supported Protocols	TCP/IP, ICMP, HTTP, HTTPS, FTP, DHCP, DNS, DDNS, RTP, RTSP, RTCP, PPPoE, NTP, UPnP, SMTP, SNMP, IGMP, 802.1X, QoS, ONVIF		
Alarm Input/Output	N/A		
Power		DC12V/PoE(802.3af)	
Environmental		-30°C to 60°C (-22°F to 140°F)	
Protection	N/A		N/A
SD card		support up to 128G micro SD card (suggest class 10)	
Others		3D DNR, BLC	
Intelligent Alarm	N/A	Person Detection	




TopView				
Mode	TO2708-IRE	TO2708-IZRE	TO6808-IRE NEW	TO6808-IZRE NEW
Picture				
Resolution	4M	4M	5M	5M
Image Sensor	1/3" CMOS	1/3" CMOS	1/2.7" CMOS	1/2.7" CMOS
Lens	2.8mm-12mm	2.8mm-12mm (Auto and Vari Focus)	2.8mm-12mm	2.8mm-12mm (Auto and Vari Focus)
WDR	120DB			
Smart function(optional)	RVI (face recognition, Vehicle Recognition, object recognition)			
Minimum Illumination	0.001Lux			
Frame Rate	Main Stream (2560×1440@30fps),Sub Stream (704×576@30fps)		Main Stream (2592×1920@15fps,2560x1440@30fps),Sub Stream (704×576@30fps)	
IR Range	50-70M			
D/N	IR-CUT			
Audio	1-ch 3.5 mm audio in interface, 1 built-in Microphone; 1-ch 3.5mm audio out interface			
Shutter Time	1/3s~1/100000s			
Compression	H.264, MJPEG, G.711 for audio compression		H.265, MJPEG, G.711 for audio compression	
Internet Interface	RJ-45 (10/100/1000Base-T)			
Supported Protocols	TCP/IP, ICMP, HTTP, HTTPS, FTP, DHCP, DNS, DDNS, RTP, RTSP, RTCP, PPPoE, NTP, UPnP, SMTP, SNMP, IGMP, 802.1X, QoS			
Alarm Input/Output	1 in and 1 out (Network disconnect, IP address conflict, Storage exception)			
Power	DC12V/POE (-E model)			
Environmental	Φ96*269mm (Φ3.78"*10.6")			
Protection	IK10, IP66			
SD card slot	Micro SD up to 128G, (suggest Class10)			
Power Consumption	<12W			
Intelligent Alarm	N/A		Person Detection	

OpenView				
Mode	OP2708-IRE	OP2708-IZRE	OP6808-IRE NEW	OP6808-IZRE NEW
Picture				
Resolution	4M	4M	5M	5M
Image Sensor	1/2.8" CMOS	1/2.8" CMOS	1/2.7" CMOS	1/2.7" CMOS
Lens	2.8mm-12mm	2.8mm-12mm (Auto and Vari Focus)	2.8mm-12mm	2.8mm-12mm (Auto and Vari Focus)
WDR	120DB			
Smart function(optional)	RVI (face recognition, Vehicle Recognition, object recognition)			
Minimum Illumination	0.001Lux			
Frame Rate	Main Stream (2560×1440@30fps),Sub Stream (704×576@30fps)		Main Stream (2592×1920@15fps,2560x1440@30fps),Sub Stream (704×576@30fps)	
IR Range	50-70M			
D/N	IR-CUT			
Audio	1-ch 3.5 mm audio interface, 1 built-in Microphone; 1-ch 3.5mm audio interface			
Shutter Time	1/3s~1/100000s			
Compression	H.264, MJPEG, G.711 for audio compression		H.265, MJPEG, G.711 for audio compression	
Internet Interface	RJ-45 (10/100/1000Base-T)			
Supported Protocols	TCP/IP, ICMP, HTTP, HTTPS, FTP, DHCP, DNS, DDNS, RTP, RTSP, RTCP, PPPoE, NTP, UPnP, SMTP, SNMP, IGMP, 802.1X, QoS			
Alarm Input/Output	1 in and 1 out (Network disconnect, IP address conflict, Storage exception)			
Power	DC12V/POE (-E model)			
Environmental	Φ96*269mm (Φ3.78"*10.6")			
Protection	IK10, IP66			
SD card slot	Micro SD up to 128G, (suggest Class10)			
Power Consumption	<12W			
Intelligent Alarm	N/A		Person Detection	

POE Switch				
S1505-4P-65W	S2010-8P-150W	S2018-16P-270W	S2026-24P-400W	
				
IEEE802.3af & IEEE802.3at	IEEE802.3af & IEEE802.3at	IEEE802.3af & IEEE802.3at	IEEE802.3af & IEEE802.3at	
4x10/100Mbps PoE	8x10/100/1000Mbps PoE	16x10/100Mbps PoE	24x10/100Mbps PoE	
1x10/100Mbps RJ45	2x10/100Mbps SFP	2x10/100/1000Mbps Combo	2x10/100/1000Mbps Combo	
1G Switching capacity	5.6G Switching capacity	7.2G Switching capacity	8.8G Switching capacity	
One Key CCTV Mode	13"1U Rack-mount	19"1U Rack-mount	19"1U Rack-mount	

SuperView			
Mode	SU2508-ZE	SU2708-ZE	SU6808-ZE NEW
Picture			
Resolution	2MP	4M	5M
Image Sensor	1/2.8" CMOS		1/2.7" CMOS
Lens	2.8mm-10mm (Auto and Vari Focus)		
WDR	120DB		
Smart Recognition	RVI (face recognition, Vehicle Recognition, object recognition)		
Minimum Illumination	0.001Lux		
Frame Rate	Main Stream (2560×1440@30fps), Sub Stream (704×576@30fps)		Main Stream (2592×1920@15fps, 2560×1440@30fps), Sub Stream (704×576@30fps)
IR Range	N/A		
Lens Mount	CS		
Audio	1-ch 3.5 mm audio in interface, 1 built-in Microphone; 1-ch 3.5mm audio interface		
Shutter Time	1/3s~1/100000s		
Compression	H.264, MJPEG, G.711 for audio compression		H.265/Smart H.265
Internet Interface	RJ-45 (10/100/1000Base-T)		
Supported Protocols	TCP/IP, ICMP, HTTP, HTTPS, FTP, DHCP, DNS, DDNS, RTP, RTSP, RTCP, PPPoE, NTP, UPnP, SMTP, SNMP, IGMP, 802.1X, QoS		
Power	1 in and 1 out (Network disconnect, IP address conflict, Storage exception)		
Alarm Input/Output	DC12V/POE (-E model)		
Environmental	Φ96*269mm (Φ3.78**10.6")		
Protection	IK10, IP66		
Edge Storage	Micro SD up to 128G, (suggest Class10)		
Others	< 12W		
Intelligent Alarm	N/A		Person Detection

AroundView (Coming soon)	
Mode	AR6807-IZRE NEW
Picture	
Resolution	5M
Image Sensor	1/2.7" CMOS
Lens	4X(2.8-12mm)/F1.6
WDR	More than 120db
Horizontal Angle of View	113°(W)-29°(T)°
Minimum Illumination	0.01 Lux
Frame Rate	Main Stream (2592×1920@15fps, 2560×1440@30fps), Sub Stream (704×576@30fps)
IR Range	Up to 50m
D/N	IR-CUT
Shutter Time	1s~1/100000s
Compression	H.265/Smart H.265
Audio	1 built in Mic/ 1 line out
Internet Interface	RJ-45(10/100/1000Base-T)
Supported Protocols	TCP/IP, ICMP, HTTP, HTTPS, FTP, DHCP, DNS, DDNS, RTP, RTSP, RTCP, PPPoE, NTP, UPnP, SMTP, SNMP, IGMP, 802.1X, QoS, ONVIF
Power	DC12V/POE (-E model)
Alarm Input/Output	N/A
Environmental	-30°C to 60°C (-22°F to 140°F)
Protection	IP66
Edge Storage	Built-in SD card slot, supports Micro SD / SDHC card (up to 128G)
Others	3D DNR, BLC
Intelligent Alarm	Person Detection

Accessories		
C1401	B1401	A-PoE-PD512
		
Materia: Al Die-Casting(Shell) Aluminum Profile(Shield)	Material: Al Die-Casting Mounting: Wall Hanging	LED: Input and Output LED Indicators Temperature: -10-60 °C
Weight: 1.2kg	Environment: Indoor/Outdoor	Humidity: MAX 85%
Working Environment: -0°C ~ +50°C	Load-bearing: 25kg	Applicable Situation: Power over Ethernet
Weather Proof: IP66	Weight: 0.4kg	Size: 102.24mmX45.5mmX27.67mm
Size: 280mm×110mm×115mm	Size: 225mm×74mm×115mm	

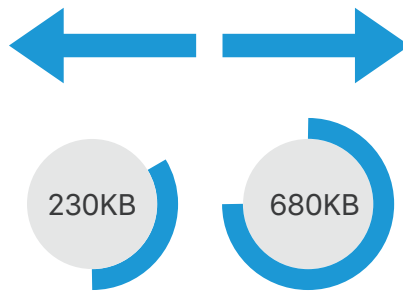
RVI Algorithm

Real time video stream analysis is a comprehensive intelligent algorithm based on front-end real-time video streaming. Widely used in Anviz camera and NVR products.

1. Smart Stream Compression

Anviz Video compression technology based on automatic scene judgement. Under dynamic, static, range, illumination and other comprehensive factors. The lowest bit rate can be reduced to less than 100KBPS, and comprehensive storage savings are more than 30% compared with the main H. 265+ technology

Smart Stream

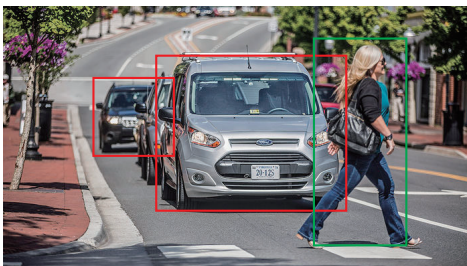


H.265+



2. Edge AI Algorithm

RVI could realize edge AI algorithm for up to 200 person and vehicles detection.



3. Video optimization technology

RVI can optimize image such as low illumination, wide dynamic, fog penetration, really achieve the image optimization, at the same time, save computational power, increase memory space.



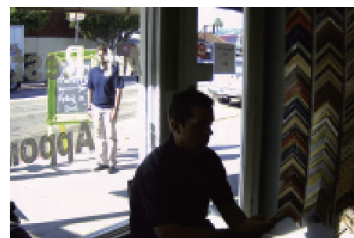
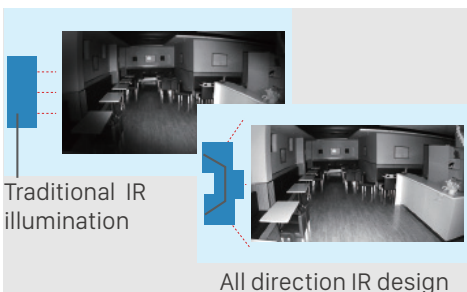
Ordinary Camera



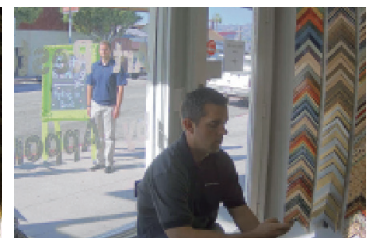
Starlight Camera

4. Smart All Range IR

RVI provides smart all range IR technology to provide best night vision.



Ordinary Camera

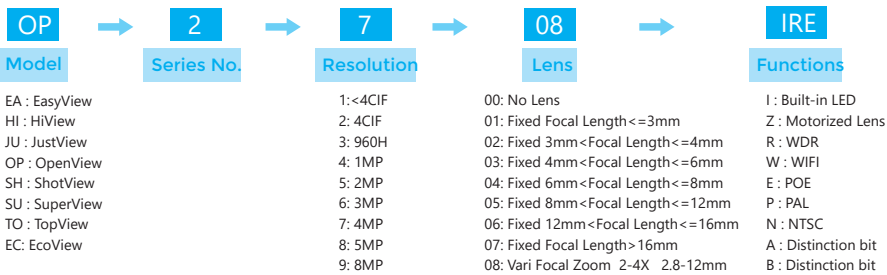


WDR Camera

	MiniStore	EcoStore	TurboStore	EverStore
	NMS215-1W	NCS115-2	NTS137-4	NES127-8 NES128-8
Network Video Input	16Channel (4 Channel WiFi)	16Channel	32 Channel	32 Channel 64 Channel
Record Rate	Up to 100Mbps	Up to 100Mbps	Up to 200Mbps	Up to 260Mbps
Audio	N/A	1*in, 1*out	1*in, 1*out	1*in, 1*out
HDMI Output	N/A	1 Channel	1 Channel	1 Channel
VGA Output	N/A	1 Channel	1 Channel	1 Channel
Playback	4ch@1080P	4ch@1080P	8ch@1080P	8ch@1080P
HDD Interface	1*SATA Port	2*SATA Port	4*SATA Ports	8*SATA Ports
Maximum Storage	Up to 8TB	Up to 8TB	Up to 16TB	Up to 32TB
Network Interface	1*RJ45 10/100/1000Mbps	5*RJ45 10/100Mbps(4*POE)	2*RJ45 10/100/1000Mbps	2*RJ45 10/100/1000Mbps
Serial Interface	N/A	N/A	N/A	1*RS232 /1*RS485
USB	1*USB Ports	2*USB Ports	3*USB Ports	3*USB Ports
Alarm	N/A	1*in, 1*out	N/A	3*in, 3*out
Power Supply	DC12V 2A	DC48V 1.5A	DC12V 5A	AC100 ~ 240V
Power Consumption	≤20W	≤20W	≤50W	≤100W
Dimension(W×D×H)	170mm x 233mm x 44mm	173mm x 122mm x 236mm	170mm x 230mm x 135mm	1.5U, 440mm x 450.8mm x 60mm
Weight	≤1.5kg(3.3 pounds)	≤1.5kg(3.3 pounds)	≤3.5kg(7.7 pounds)	≤9.5kg(20.9 pounds)
Network Function	IPv4, IPv6, HTTP, UPnP, NTP, SNMP, PPPoE, DNS, FTP, ONVIF			
Compression	H.265/Smart H.265/H.264		H.264/MPEG4/MJPEG	
Recording Resolution	1080P/720P			
Recording Mode	Manual, Motion Detection, Schedule, Alarm			
Backup Mode	HDD, USB HDD, USB CD&DVD-RW			
Working Environment	-10 C ~ +55 C / 10% ~ 90%			

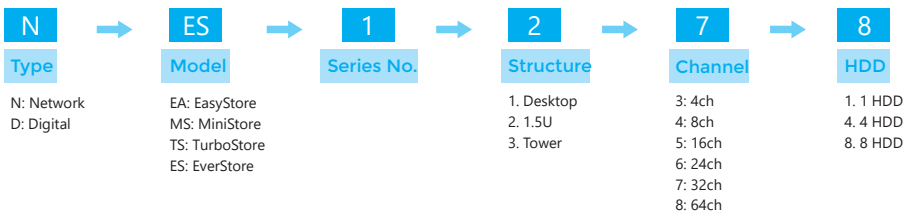
IP Camera

OP2708-IRE OpenView 4MP 2.8-12mm IR WDR PoE



NVR

NES127-8 Network EverStore 1.5U 32CH 8HDD



Anviz Global Inc.

41656 Christy Street Fremont, Fremont, CA, 94538

Tel: 408-2637700 | Toll-free: 1-855-268-4948 | Inquiry: sales@anziv.com | www.anviz.com

©2019 Anviz Global Inc. Anviz and identifying product names and numbers herein are registered trademarks of Anviz Global Inc. All non-Anviz brands and product names are trademarks or registered trademarks of their respective companies. Product appearance, build status and/or specifications are subject to change without notice.

Due to the consistent improvement of the product, this specification and appearance are subject to change without notice.