

T60 **PRO**

Color screen professional Access control



Cloud



WiFi



Linux



PoE

T60 pro is the new generation professional access control reader with new big 2.8" LCD screen, Linux 1GHZ fast processor, T60pro also provides various of communication interfaces such as WIFI, POE, TCP/IP and an optional 4G function. The webserver function ensures an easily management to the device. Also 2 Relays out, Wiegand in/out functions are the standard access control interfaces. A standard EM card reader and an optional Mifare card reader is equipped onto T60 pro.

Features



1GHz Linux Based Processor

The new Linux based 1GHz processor ensures the 1:3000 comparison time less than 0.5 second.



PoE Easier Installation

The POE function realizes the one cable installation of the device and also can let the device trigger the lock directly.



WiFi Flexible Communication

The WiFi function ensures power on to work, and realize the flexible installation of the device.



4G

The 4G communication ensures the flexible communication saving the installation cost and applied in the area with poor or without internet.



Touch Active Fingerprint Sensor

The touch active sensor ensures the quick response for each detection and saving the total power consumption of the device.



Dual Relay

Dual relays ensuring the flexible connection with locks, door bells and other devices upon your requirements.



Colorful LCD Screen

The Colorful LCD screen ensures the best interaction and user experiences and can also provide clear notifications to the users.



Webserver

The Webserver ensures the easily quick connection and self management of the device.



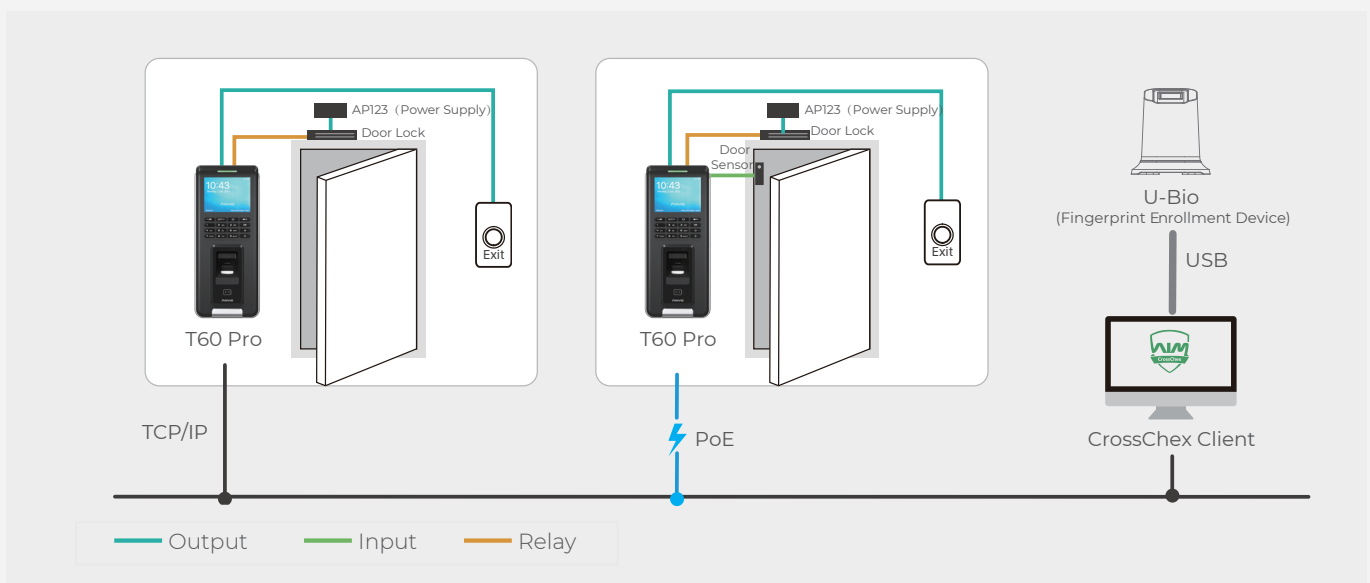
Cloud application

The web based cloud application let you access to the device by any mobile terminal from anytime and anywhere.

Key Specifications

User	3000
Card	3000
Record	100,000
Communication	RS485, Mini USB, PoE (IEEE802.3af), USB Host, Optional WiFi/4G
Identification mode	Finger, password, card (standard EM, optional Mifare)
Identification speed	<0.5s
Card reading distance	"1~5cm (125KHz), 13.56MHz >2CM) for standard CR80 card"
WebServer	Support
CPU	32-bit processor
RFID card	standard EM, optional Mifare
Working Temperature	-30°C~60°C
Humidity	20% to 90%
POE	support
Power	DC12V

System configurations



Anviz Global Inc.

41656 Christy Street Fremont , Fremont, CA,94538

Tel: 1-510-573-6552 | Toll-free:1-855-268-4948 | Inquiry: sales@anziv.com | www.anviz.com

©2020 Anviz Gloabl Inc. Anviz and identifying product names and numbers herein are registered trademarks of Anviz Global Inc. All non-Anviz brands and product names are trademarks or registered trademarks of their respective companies. Product appearance, build status and/or specifications are subject to change without notice.

Due to the consistent improvement of the product, this specification and appearance are subject to change without notice.