

FACEPASS 7 IRT

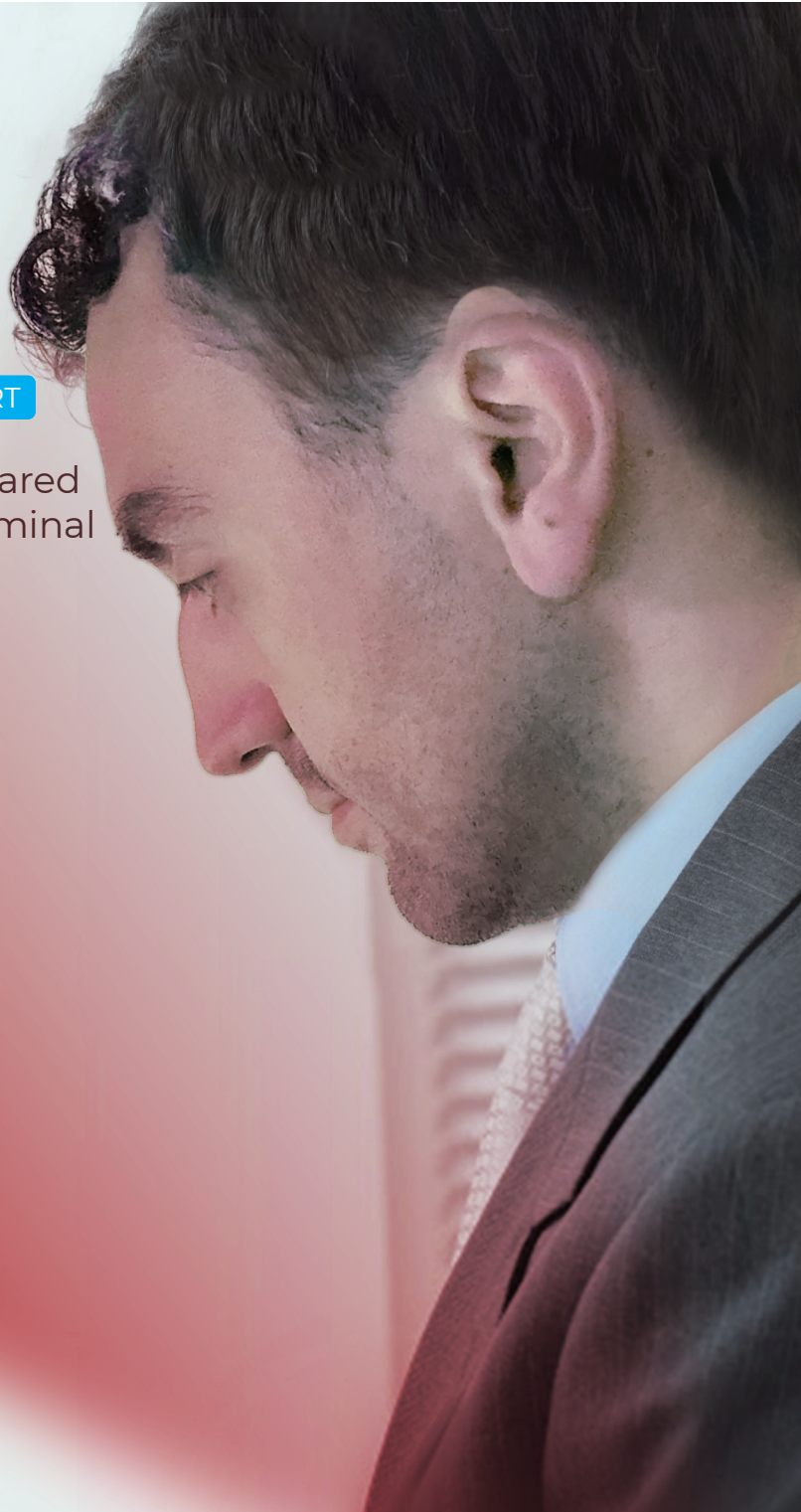
Touchless Face Recognition and Infrared Thermal Temperature Detection Terminal



Detección
de Rostro



Infrared Thermal
Temperature
Detection



FacePass 7 IRT touchless facial recognition and infrared thermal temperature detection terminal is equipped with AI deep learning architecture and infrared live detection technology, which provide 24/7 accurate identification. With the temperature detection module, FacePass 7 IRT allows a detection distance of 0.3~0.5 m with a deviation of ± 0.3 °C.

FacePass 7 IRT is equipped with a new Linux CPU, implementing a face-capturing of less than 1 second, and a recognition time within 0.5 seconds. The super wide HD camera provides flexible and rapid recognition at multiple angles and distances.

FacePass 7 IRT can communicate through WiFi, 4G or wired network, and can also be managed through its own Web-server and PC based professional software.

FACEPASS 7 IRT

Touchless Face Recognition and Temperature Screening Terminal

Technical Specifications

Capacity	User Capacity	3,000
	Card Capacity	3,000
	Log Capacity	100,000
Interface	Communication	TCP/IP, RS485, USB Host, WiFi, Optional 4G
	I/O	Relay Output, Wiegand Output, Door Sensor, Switch, Doorbell
Feature	Identification	Face, Card, ID+Password
	Verify Speed	<1s
	Image Display	Support
	Self-defined Status	10
	Record Self-check	Support
	Embedded Webserver	Support
	Doorbell	Support
	Multi-languages Support	Support
	Software	Crosschex Standard
Hardware	CPU	Dual-core 1.0GHz
	Infrared Thermal Temperature Detection Module	10-50°C Detection range Detect distance 30-50 cm (11.81 -19.69 ") Accuracy ±0.3 °C (0.54 °F)
	Face Detection Camera	Dual Camera
	LCD	3.2" HD TFT Touch Screen
	Sound	Support
	Angle Range	Level: ±20°, Vertical: ±20°
	Verify Distance	30-80 cm (11.81-31.50 ")
	RFID Card	Standard EM, Optional Mifare
	Tamper Alarm	Support
	Operating Temperature	-20 °C (-4 °F)- 60 °C (140 °F)
	Operating Voltage	DC 12V

System configurations

