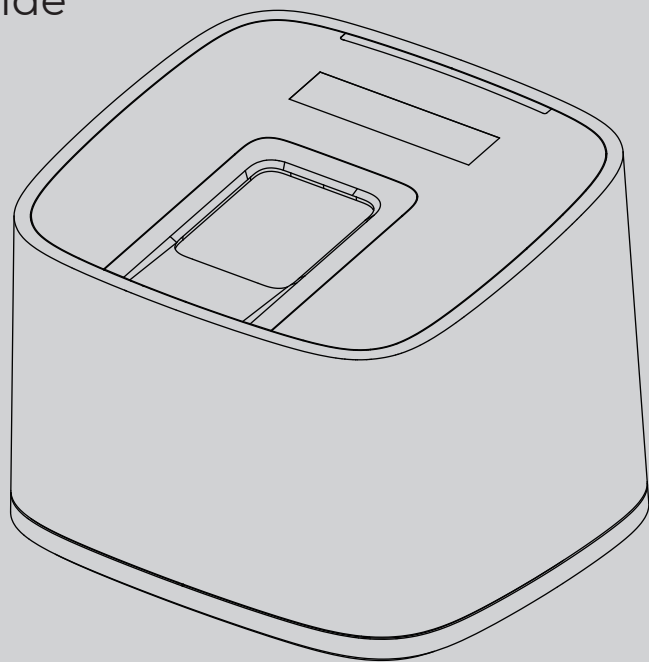


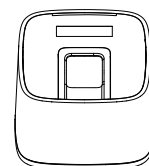
M-Bio

Desktop and Wireless Fingerprint and Card Terminal

Quick Guide



Package List



Device



USB Cable



Quick Guide



X4

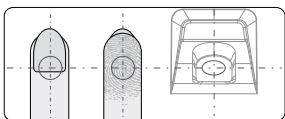
RFID Card

Notification:

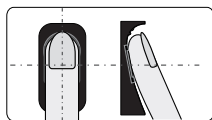
1. Please check if the package contains all the items listed above. Contact the distributor if there is any problem.
2. Please keep the product away from the magnetic field, and avoid causing any damage to the device.
3. Please use the original power supply or refer to the instruction to get the right power supply.
4. Please strictly follow the instructions to install the product. Any damage to it caused by incorrect operation and wiring are not under warranty.

Illustration for Placing Finger

- **Correct Method** (Straighten your finger and then place it on the sensor. Ensure the finger is flat and covers the entire sensor)

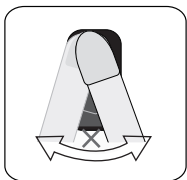


Always place finger in the center of the sensor.

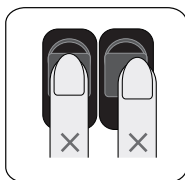


Try to place your finger covers the entire sensor.

- **Incorrect Method**



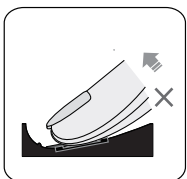
the sensor backlight turns off.



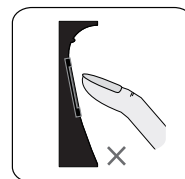
DO NOT place finger away from the center of the sensor.



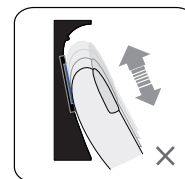
DO NOT place finger at an angle.



DO NOT take off finger during the fingerprint verification process.

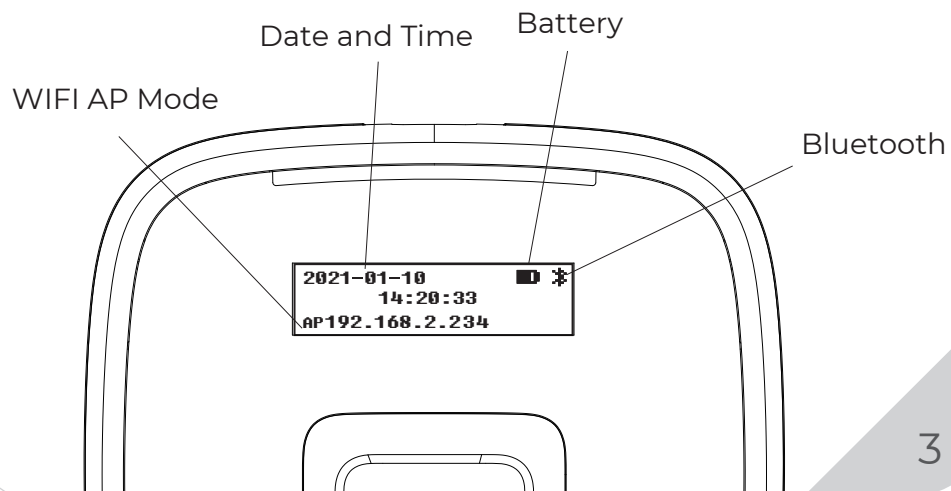
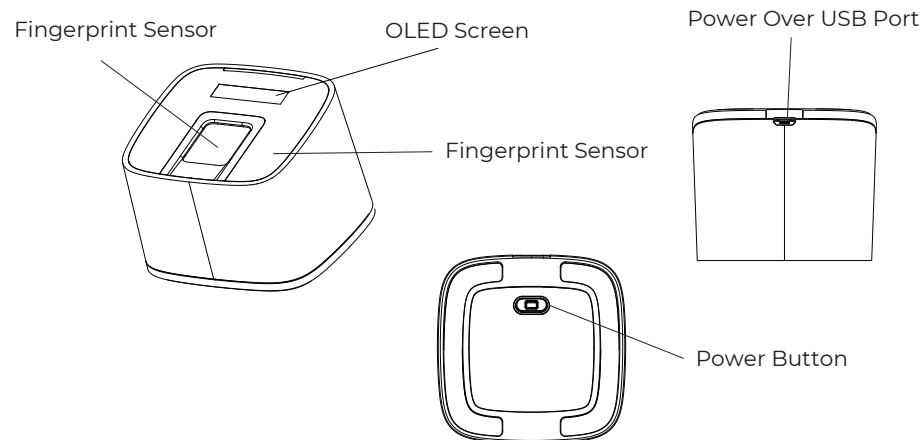


DO NOT just use your fingertip.



DO NOT slide your finger during the fingerprint verification process.

Appearance



Operation Guide

IMPORTANT:

M-Bio is suitable for USB 5V power supply only. Power on the device still the device screen display as below:

Register User:

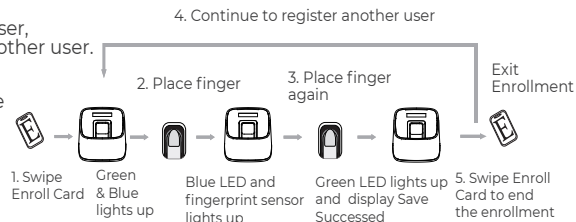
Add One Fingerprint per User Only:

Note: 1. After finish enrolling current user, the device will continue to register another user.

2. After finish enrollment, please swipe enroll card to exit enroll status.

Notice:

During the device in the register mode without any operation for 3 sec the M-bio will back to the normal mode.



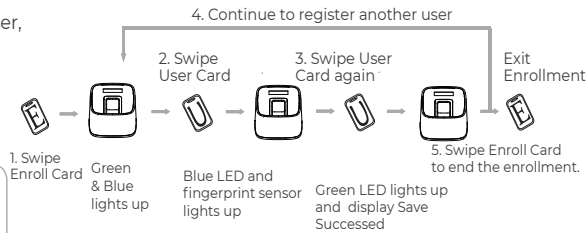
Add Card Only:

Note: 1. After finish enrolling current user,

2. After finish enrollment, please swipe enroll card to exit enroll status.

Notice:

During the device in the register mode without any operation for 3 sec the M-bio will back to the normal mode.



Operation Guide

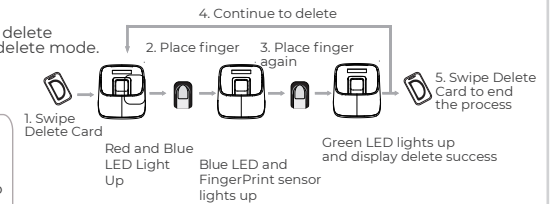
Delete User:

Delete Fingerprint or Card

After delete one user, you can continue to delete another user or swipe Delete Card to exit delete mode.

Notice:

During the device in the delete mode without any operation for 3 sec the M-bio will back to the normal mode.

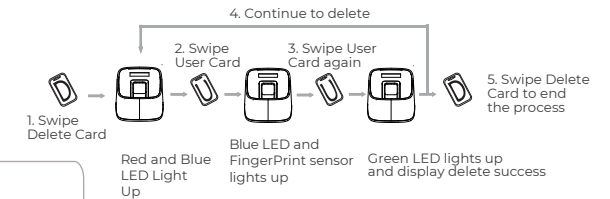


Delete Card:

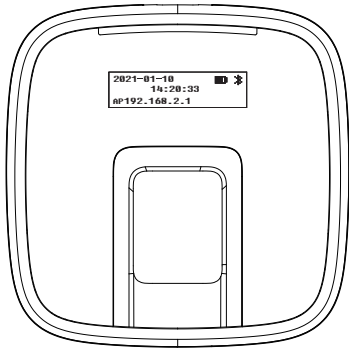
After delete one user, you can continue to delete another user or swipe Delete Card to exit delete mode.

Notice:

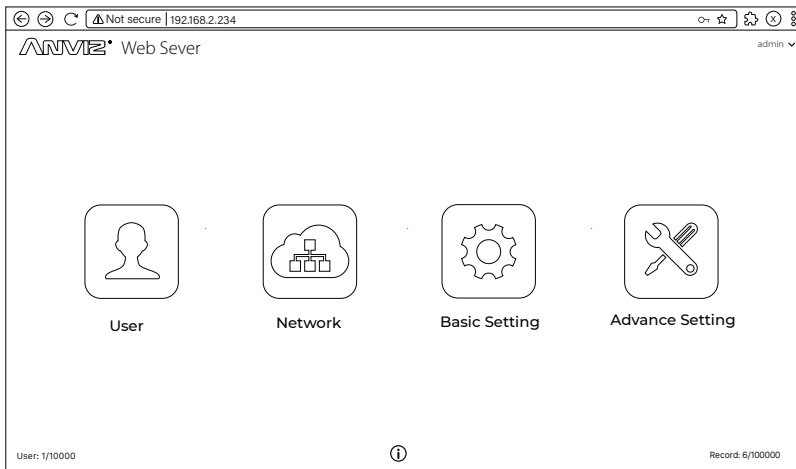
When you swipe card on M5 Pro, Red LED flashing with long beeps means the card does not exist in the device.



Login WebServer



Login to M-bio Webserver to manage the device.
M-bio is default with WIFI AP function.
Please connect M-Bio WIFI AP
WIFI SSID: M-bio
Default Password: 123456789

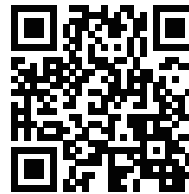


The Webserver Login Account: **admin** Password: **12345**

Anviz brand and product are trademarked and protected under law of the United States.
Unauthorized use is prohibited.
For more information, please visit www.anviz.com, or send email to sales@anviz.com for more help.
© 2021 Anviz Global Inc. All Rights Reserved.



In order to protect the environment, Anviz has decided to go "CD Free" campaign since June 1st 2019. We will provide QR code for you to download the electronic documents to make sure that you understand how to install and use Anviz devices.



CrossChex Mobile App



<https://bit.ly/2Vn0wh6>

Google



<https://bit.ly/2J9qA95>

Anviz

Anviz brand and product are trademarked and protected under law of the United States.
Unauthorized use is prohibited.

For more information, please visit www.anviz.com, or send email to sales@anviz.com for more help.

©2021 Anviz Global Inc. All Rights Reserved.